


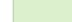

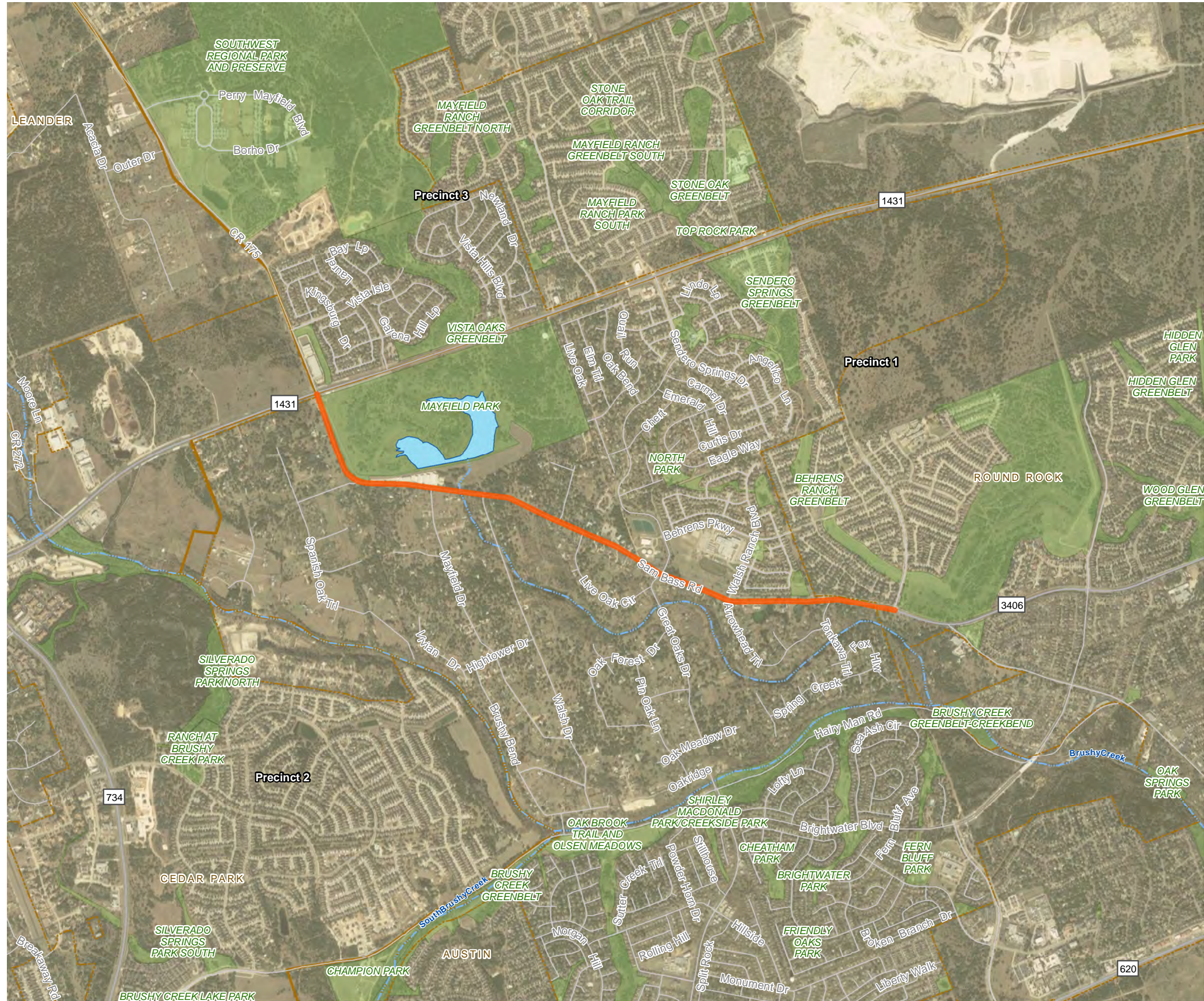




Roadway: Corridor H
Limits: Sam Bass Road from RM 1431 to Wyoming Springs Drive
Proposed Improvements: Preliminary Engineering, Environmental Studies, Public Involvement and Schematic Development

-  Proposed Project
-  River/Stream
-  Precinct Boundary
-  Park
-  City

0 0.25 0.5 1
 Miles 1 inch ~ 2,083 feet



Path: \\AUS\W00\upass\61272_WillCo\as\m\p\an\GEO\Technical\GIS\MXD\EXHIBIT\Projects_Individual\PROJECTS\20170707_P1_CorridorH_SamBass.mxd Date Saved: 7/7/2017