
Williamson County Interjurisdictional CWPP

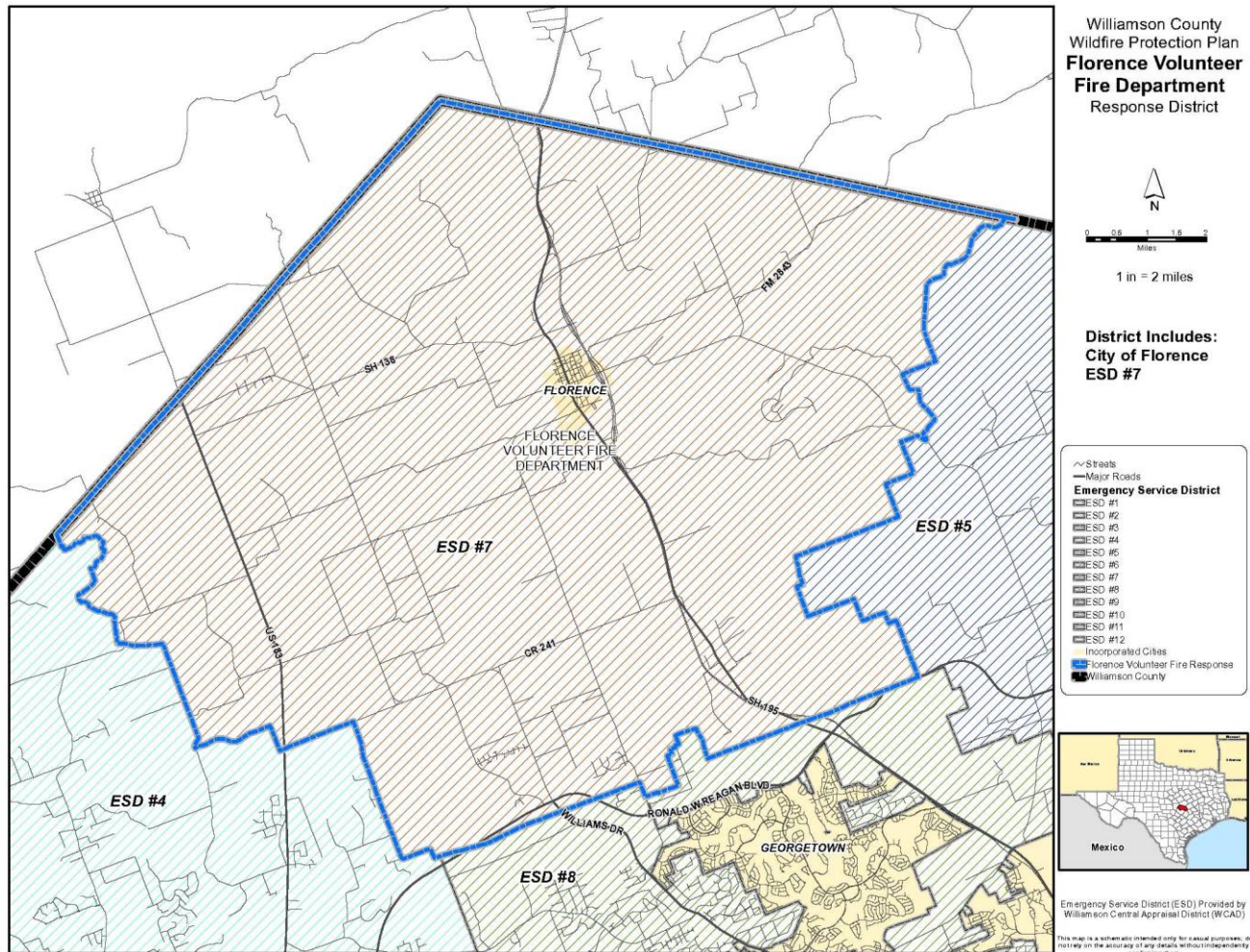
Annex 5: Florence Volunteer Fire Department

Note: The Florence Fire Department maintains an independent Wildfire Protection Plan. This annex was included into this plan to provide a complete overview of all areas within Williamson County. For access to the Florence Wildfire Protection Plan please contact the Florence Fire Department.

ANNEX 5: FLORENCE VOLUNTEER FIRE DEPARTMENT

INTRODUCTION

Organization and Jurisdiction



The Florence Volunteer Fire Department is responsible for safely mitigating emergency incidents with a minimum loss of lives and property through the efficient, effective, and timely response of personnel and equipment and programs that promote fire and life safety. The firefighters on the department are also EMS certified. Minimum staffing of paid firefighters is one per day who work 48 hour shifts with 96 hours off between shifts.

Name:	Florence Volunteer Fire Department
Address:	301 South Patterson Ave., Florence, TX
Department Type:	Volunteer and Paid
Number of Stations:	1

Municipalities covered:	City of Florence and ESD 7
Types of Services Provided:	EMS, fire suppression, extrication, hazardous materials response, technical rescue, carbon monoxide investigations, smoke and odor investigations, and miscellaneous requests for public assistance
Firefighting Personnel:	
Full-Time Paid Firefighters	5
Part-Time Paid Firefighters	8
Volunteer Firefighters	15
Non-Firefighting Support Personnel:	
Non-Firefighting Paid Staff	
Non-Firefighting Volunteers	
Firefighting Equipment:	2 Type 6 engines 1 Water Tender 2 Brush Trucks 2 Type 1 Engines 1 Command Vehicle (SUV)
Other Firefighting Resources:	Mutual aid agreements with municipalities surrounding the City

CURRENT /HISTORICAL MITIGATION ACTIONS AND PROGRAMS

Florence City Park Fuels Project - Florence City Park is a 6.5 acre riparian ecosystem adjacent to a small neighborhood. The City received funding from Texas A&M Forest Service Fuel Mitigation Grant to create a shaded fuel break for the entire park. Texas A&M Forest Service crews will use the project as a chainsaw training exercise. The debris will be piled and mulched and used on site.

PUBLIC EDUCATION AND OUTREACH PROGRAMS

The Florence Volunteer Fire Department maintains a Facebook pages and department website to use as an effective tool to communicate with residents. The department uses their Facebook page (<https://www.facebook.com/Florencefire/>) to post updates on fires, accidents, and rescue incidents; share public service announcements; and inform people of upcoming events. The department's website (<http://www.florencevfd.org/>) informs residents of the daily fire danger risk and information from the Texas Forest Service. They also provide the Ready, Set, Go! Wildfire Action Plan for residents to learn how to prepare for wildfires. Additionally, their website provides the department's calendar, personnel roster, and links to other department's websites and state services.

CAPABILITIES ASSESSMENT

Emergency Response Capabilities

No information Received.

Policies

No information Received.

Regulations

No information Received.

Ordinances and Codes

The Florence Code of Ordinances have provisions related, directly or indirectly, to natural hazards (including wildfire). These include:

- Chapter 1 – General Provisions
 - Adoption of the National Incident Management System, dated March 1, 2004 (Ordinance 090605-01 adopted 9/13/2005)
 - Establishment of the Cedar Park Emergency Management Organization (Ordinance 10-30- 97, sec. 1, adopted 10/30/1997)
 - Identification of the powers, duties, and responsibilities of the Emergency Management Director (Ordinance 10-30-97, sec. 2, adopted 10/30/1997)
 - Development of an emergency management plan to establish and designate divisions and functions; assign responsibilities, tasks, duties, and powers; and designate officers and employees to carry out the provisions of this division (Ordinance 10-30-97, sec. 3, adopted 10/30/1997)
- Chapter 3 – Buildings and Building Regulations
 - Building permit requirements (Ordinance 081209-01 adopted 8/18/2009)
 - Adoption of the International Building Code, 2006 edition (Ordinance 081209-07, sec. 1, adopted 8/18/2009)
- Chapter 5 – Fire and Emergency Management
 - Adoption of the International Fire Code, 2006 edition (Ordinance 081209-08, sec. 1, adopted 8/18/2009)
 - Regulations on the use, possession, and sale of fireworks (Ordinance 11042014-02, sec. 4, adopted 12/5/2014)

Plans, Reports and Studies

The City of Florence has the following planning capabilities:

- Williamson County Emergency Operations Plan
- Community Wildfire Protection Plan (2015)
- Williamson County Hazard Mitigation Plan (2015)
- City of Florence 2011-2013 Comprehensive Plan (2010)

The City of Florence works in conjunction with the Williamson County Emergency Operations Plan.

IDENTIFY CRITICAL INFRASTRUCTURE AND COMMUNITY VALUES AT RISK

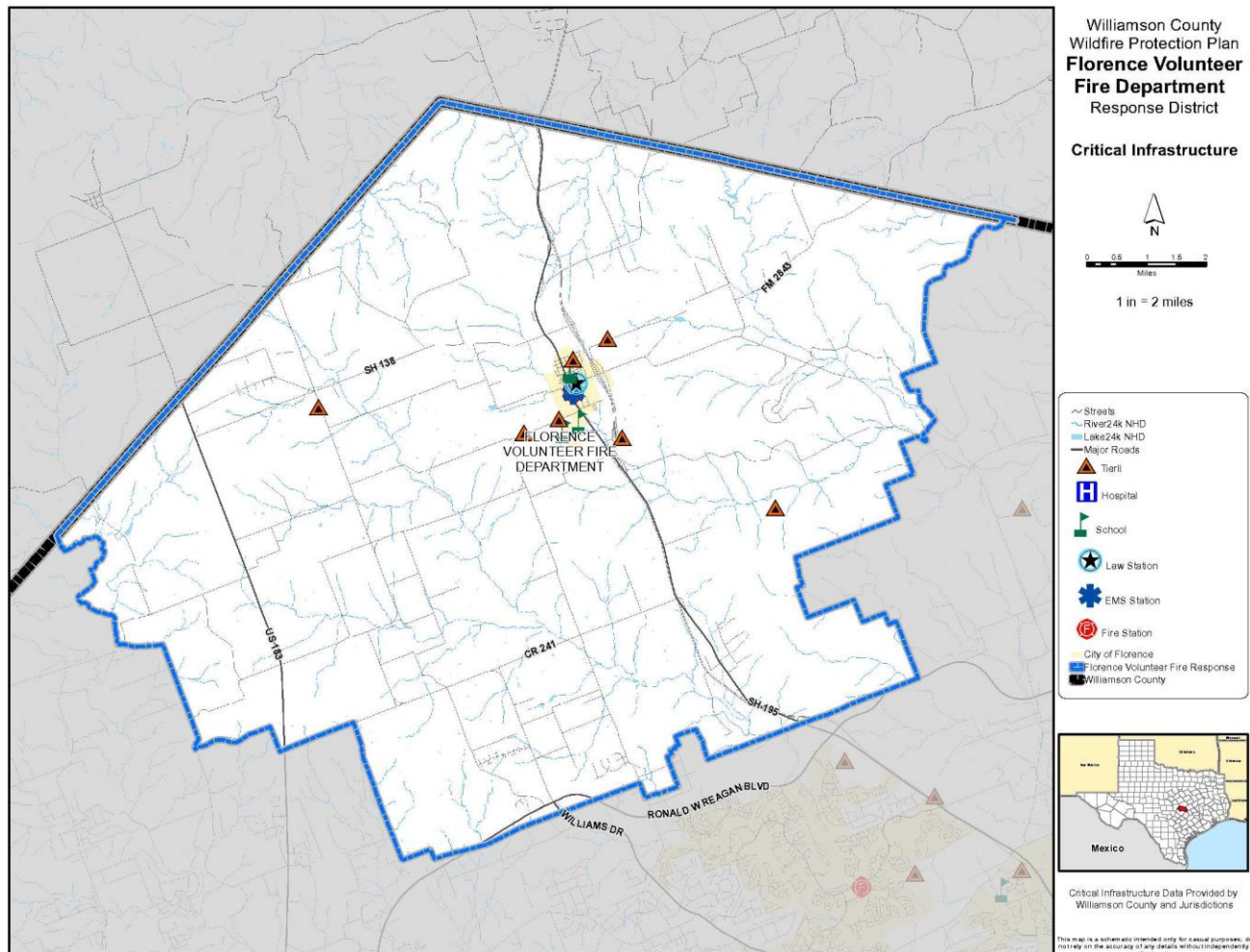
Critical Infrastructure within the Florence Volunteer Fire Department

One of the critical elements of the Community Wildfire Protection Plan is to analyze where the critical infrastructure within the district is located in comparison to the highest risk areas for wildfire. Critical facilities typically fall within the following categories: Hospitals, Schools, Law Enforcement, Fire, EMS and Tier II facilities. Within the. The following summarizes Florence Volunteer Fire Department the general types of critical facilities located within the District.

Florence Volunteer Fire Department Critical Infrastructure Summary	
Facility Type	Number of Facilities
Hospitals	0
Schools	4
Law Enforcement	1
Fire	1
Emergency Medical Services (EMS)	1
Tier II Facilities	7

As mentioned above, once the critical facilities are identified, the next step is to assess where and which facilities may be located in high risk areas and to then determine whether these facilities are candidates for special actions / measures like hardening, increased fire proofing, wildfire mitigation or relocation, etc. This plan analyzed impacts based in five wildfire factors: Wildland Urban Interface, Flame Length, Surface Fuels, Vegetation and Wildfire Threat as mapped and defined by the Texas State Forest Service and Texas A&M. More detail is provided later in this annex as to the level and possible impacts of these five characteristics.

Figure 1. Florence Critical Infrastructure



It is estimated that 23% of the total population of the City of Florence are located within the moderate to high risk areas of the WUI. According to findings in the CWPP, the following communities in the City and ESD 7 have moderate to extreme risk:

- Andice Community (extreme)
- Chapel View (moderate)
- City of Florence (extreme)
- DPS Training Facility (high)
- Flagpole Communities (moderate)
- Mission Oaks (moderate)
- Windmill Oaks (moderate)
- Pecan Branch (high)
- Ramm's Subdivision (high)
- The Vineyard (extreme)
- Wade Crossing (moderate)
- West Ridge (high)

Wildland Urban Interface Fire Hazard and Environment

As mentioned previously in the Williamson County Community Wildfire Protection Plan (CWPP) on the national level, following the establishment of the National Fire Plan via Executive Order due to the 2000 national wildfire season, work throughout the country was undertaken to identify areas at high risk from wildfire; this work would be used to identify the location of hazardous fuel reduction projects designed to reduce this risk. Communities across the nation that are considered to have a WUI have been identified; this list was subsequently published in the Federal Register.

Loss of structures due to wildland fires has been attributed to many factors, one of which is the proximity of hazardous fuels to homes and communities. During periods of hot, dry weather, the buildup of vegetation that has occurred on some Federal, State, and private lands in the vicinity of communities poses a potentially high risk of damage to homes and other structures, disruption to the local economy, or loss of life.

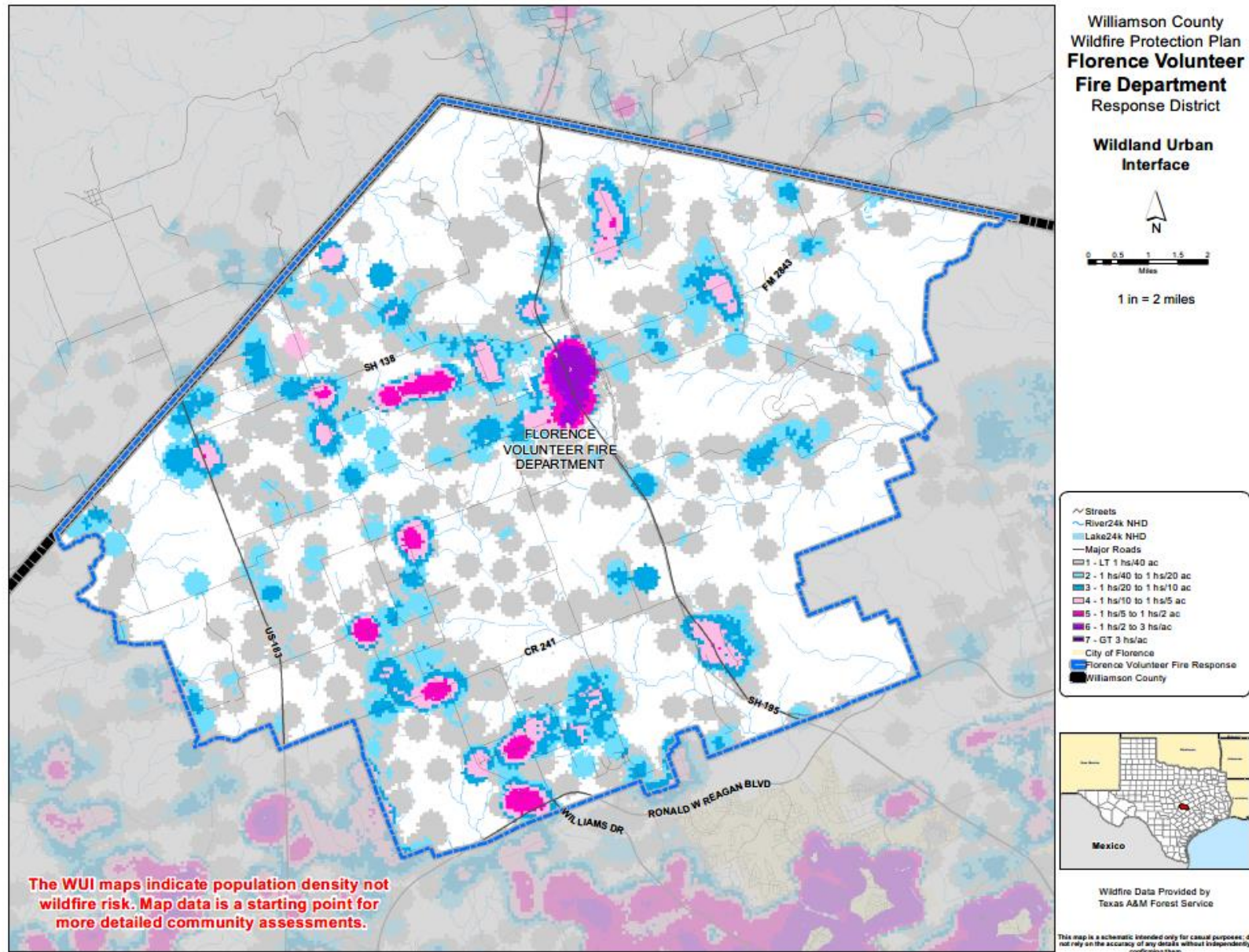
Other factors—including weather conditions and patterns, and the hazardous fuels conditions in the immediate vicinity of homes, businesses, and other structures—play important roles in the spread of wildland fire. Reducing hazardous fuel near communities may reduce, but not eliminate, wildfire risks to these communities. Some risk is inherent to communities that exist in fire-dependent ecosystems. Private landowners may help reduce this risk by creating defensible space around their homes and businesses, and by using fire-resistant materials in building those structures. Without such precautionary measures, fuel reduction on Federal land in the vicinity may be ineffective in significantly reducing community risk.

Per the Texas A&M Forest Service “The WUI is described as the area where structures and other human improvements meet and intermingle with undeveloped wildland or vegetative fuels. Population growth within the WUI substantially increases the risk from wildfire. In Texas nearly 85% of wildfires occur within two miles of a community.” Texas is one of the fastest growing states in the Nation, with much of this growth occurring adjacent to metropolitan areas. This increase in population across the state will impact counties and communities that are located within the Wildland Urban Interface (WUI).

For the area served by the Florence VPD project area, it is estimated that 5,144 people or 99% of the total project area population (5,178) live within the WUI.

The Texas A&M Forest Service WUI dataset is derived using advanced modeling techniques based on the Where People Live dataset and LandScan USA population count data available from the Department of Homeland Security, HSIP Freedom Data Set. WUI is simply a subset of the Where People Live dataset. The primary difference is populated areas surrounded by sufficient non-burnable areas (i.e. interior urban areas) are removed from the Where People Live data set, as these areas are not expected to be directly impacted by a wildfire.

Figure 2. Wildland Urban Interface



	Housing Density	WUI Population	Percent of WUI Population	WUI Acres	Percent of WUI Acres
	LT 1hs/40ac	694	13.5 %	21,799	58.1 %
	1hs/40ac to 1hs/20ac	658	12.8 %	7,327	19.5 %
	1hs/20ac to 1hs/10ac	727	14.1 %	4,695	12.5 %
	1hs/10ac to 1hs/5ac	815	15.8 %	2,370	6.3 %
	1hs/5ac to 1hs/2ac	773	15.0 %	936	2.5 %
	1hs/2ac to 3hs/1ac	1,477	28.7 %	425	1.1 %
	Total:	5,144	100.0 %	37,551	100.0 %

Surface Fuels

Surface fuels are important to categorize for they account for the surface fire potential. Canopy fire potential is computed through a separate but linked process. The Texas Wildfire Risk Assessment (TWRA) Summary Report for Williamson County accounts for both surface and canopy fire potential in the fire behavior outputs.

Surface fuels are typically categorized into one of four primary fuel types based on the primary carrier of the surface fire:

- Grass
- Shrub/brush
- Timber litter
- Slash

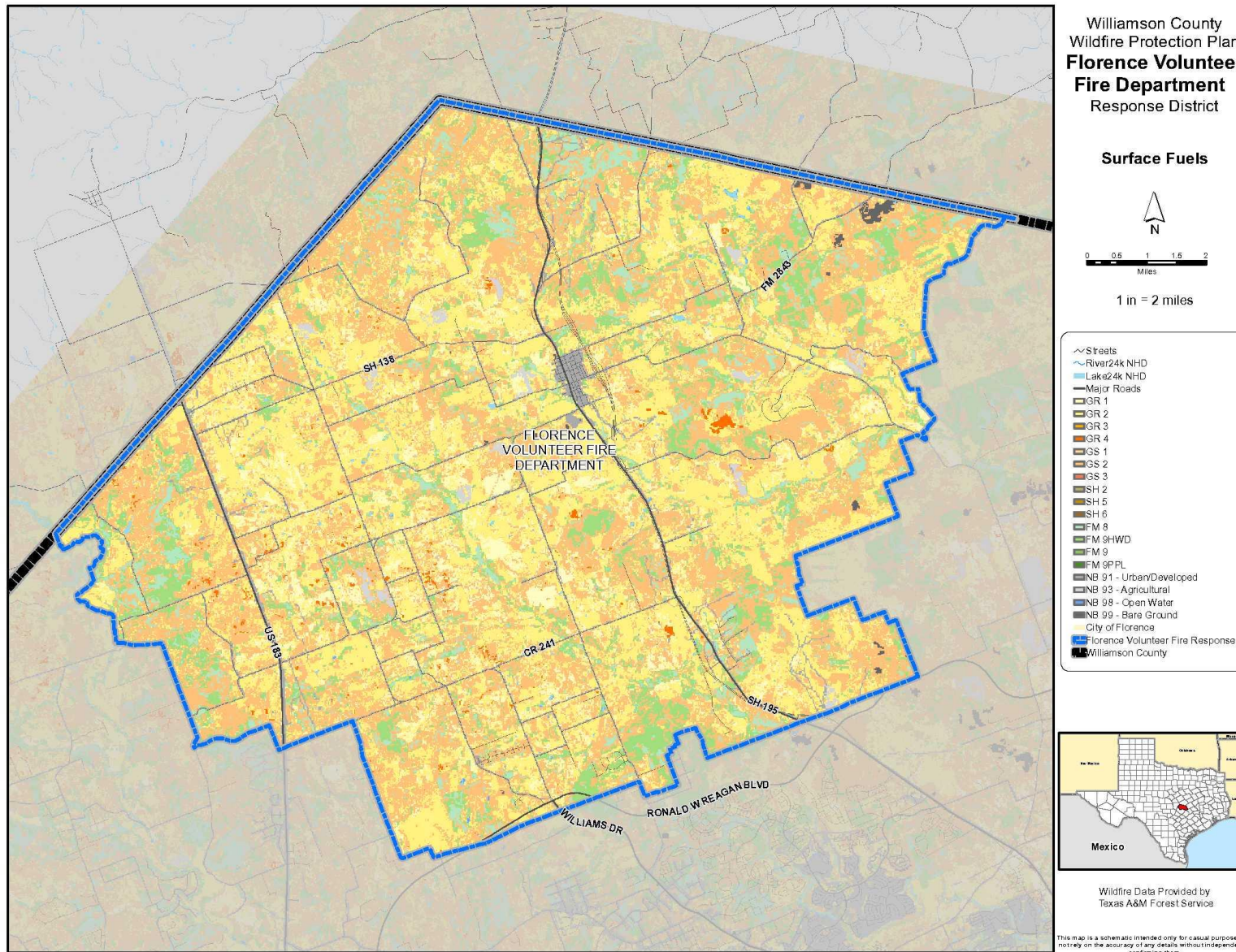
There are two standard fire behavior fuel model sets published for use. The Fire Behavior Prediction System 1982 Fuel Model Set (Anderson 1982) contains 13 fuel models and the Fire Behavior Prediction System 2005 Fuel Model Set (Scott and Burgan 2005) contains 40 fuel models. The TWRA uses fuel models from both sets, as well as two additional custom fuel models devised by Texas A&M Forest Service.

Figure 3 and the associated table shows that the county primarily consists of Moderate Load, Dry Climate Grass-Shrub at 38%, followed by Low Load, Dry Climate Grass at 33.6%, Hardwood litter (fluffy) - Low Load for Texas at 9.8%, and Closed Timber Litter Short, Sparse Dry Climate Grass with 8.4%. Figure 21 is a Florence area map showing all the surface fuel types.

DEFINITIONS

Surface fuels—Surface fuels, or fire behavior fuel models as they are technically referred to, contain the parameters needed by the Rothermel (1972) surface fire spread model to compute surface fire behavior characteristics, such as rate of spread, flame length, fireline intensity, and other fire behavior metrics.

Figure 3. Florence - Surface Fuels by Type

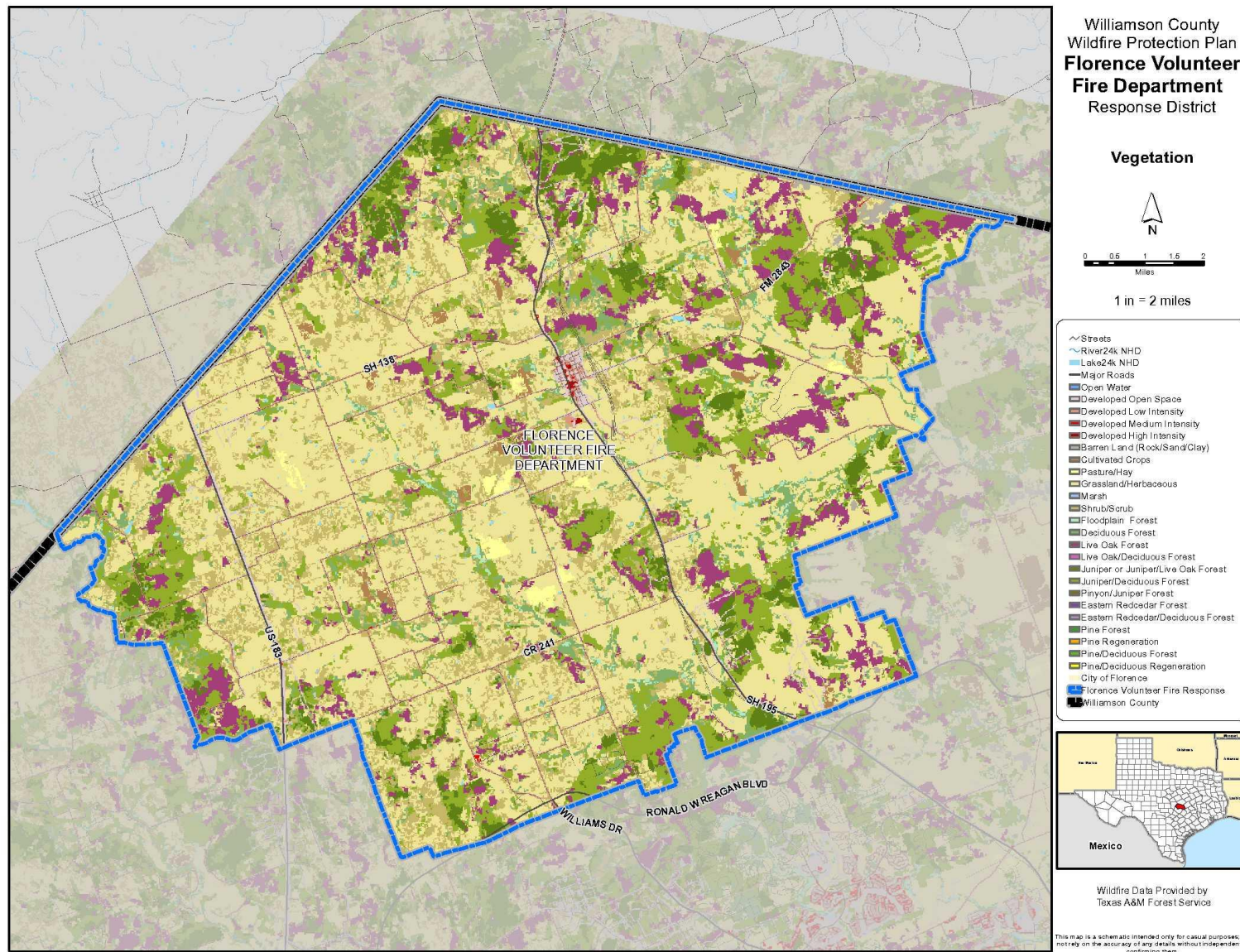


	Surface Fuels	Description	FBPS Fuel Model Set	Acres	Percent
	GR 1	Short, Sparse Dry Climate Grass (Dynamic)	2005	6,594	8.4 %
	GR 2	Low Load, Dry Climate Grass (Dynamic)	2005	26,464	33.6 %
	GR 4	Moderate Load, Dry Climate Grass (Dynamic)	2005	347	0.4 %
	GS 2	Moderate Load, Dry Climate Grass-Shrub (Dynamic)	2005	29,852	38.0 %
	FM 8	Closed timber litter (compact)	1982	3,795	4.8 %
	FM 9 HWD	Hardwood litter (fluffy) - Low Load for Texas	Custom	7,740	9.8 %
	NB 91	Urban/Developed	2005	3,151	4.0 %
	NB 93	Agricultural	2005	453	0.6 %
	NB 98	Open Water	2005	102	0.1 %
	NB 99	Bare Ground	2005	162	0.2 %
Total:				78,659	100.0%

Vegetation

The Vegetation map describes the land cover and vegetation types across the Florence area. In the Texas Wildfire Risk Assessment (TWRA), the Vegetation dataset is used to support the development of the Surface Fuels, Canopy Cover, Canopy Stand Height, Canopy Base Height, and Canopy Bulk Density datasets. The vegetation classes with descriptions are shown in the following table. It should be noted that the area is dominated by Grassland/Herbaceous plant materials (47.2%), Juniper/Deciduous Forest (14.4%), and Shrub/Scrub (14.4%).

Figure 4. Florence Vegetation



Vegetation

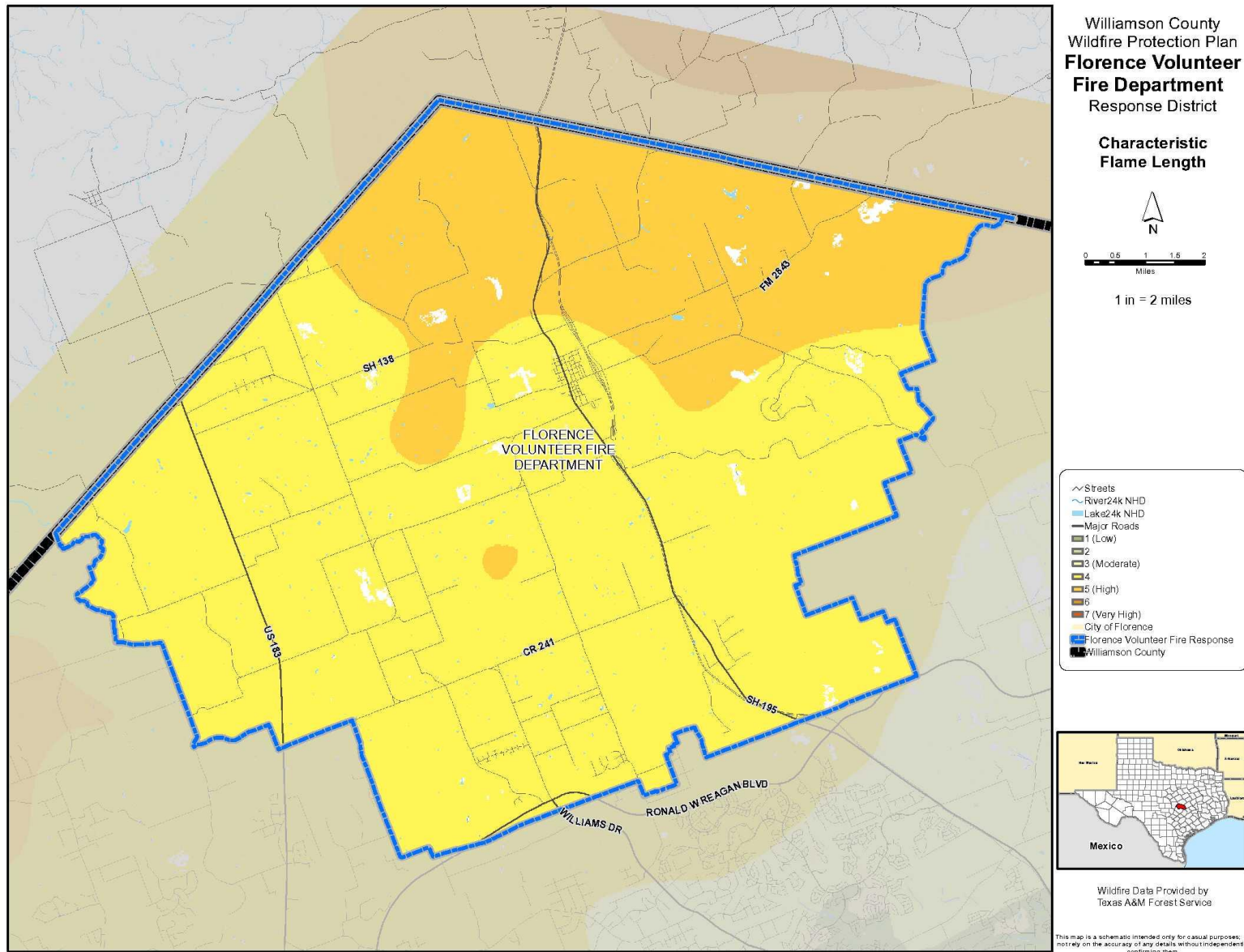
	Class	Description	Acres	Percent
	Open Water	All areas of open water, generally with < 25% cover of vegetation or soil	28	0.0 %
	Developed Open Space	Impervious surfaces account for < 20% of total cover (i.e. golf courses, parks, etc...)	1,163	1.5 %
	Developed Low Intensity	Impervious surfaces account for 20-49% of total cover	1,936	2.5 %
	Developed Medium Intensity	Impervious surfaces account for 50-79% of total cover	38	0.0 %
	Developed High Intensity	Impervious surfaces account for 80-100% of total cover	14	0.0 %
	Barren Land (Rock/Sand/Clay)	Vegetation generally accounts for <15% of total cover	157	0.2 %
	Cultivated Crops	Areas used for the production of annual crops, includes land being actively tilled	453	0.6 %
	Pasture/Hay	Areas of grasses and/or legumes planted for livestock grazing or hay production	435	0.6 %
	Grassland/Herbaceous	Areas dominated (> 80%) by graminoid or herbaceous vegetation, can be grazed	37,155	47.2 %
	Shrub/Scrub	Areas dominated by shrubs/trees < 5 meters tall, shrub canopy > than 20% of total vegetation	11,313	14.4 %
	Floodplain Forest	> 20% tree cover, the soil is periodically covered or saturated with water	328	0.4 %
	Deciduous Forest	> 20% tree cover, >75% of tree species shed leaves in response to seasonal change	4,152	5.3 %
	Live Oak Forest	> 20% tree cover, live oak species represent >75% of the total tree cover	6,096	7.7 %
	Juniper or Juniper/Live Oak Forest	> 20% tree cover, juniper or juniper/live oak species represent > 75% of the total tree cover	4,076	5.2 %
	Juniper/Deciduous Forest	> 20% tree cover, neither juniper or deciduous species represent > 75% of the total tree cover	11,314	14.4 %
Total:			78,659	100.0 %

Flame Length

Characteristic Flame Length is the typical or representative flame length of a potential fire based on a weighted average of four percentile weather categories. Flame Length is defined as the distance between the flame tip and the midpoint of the flame depth at the base of the flame, which is generally the ground surface. It is an indicator of fire intensity and is often used to estimate how much heat the fire is generating. Flame length is typically measured in feet. Flame length is the measure of fire intensity used to generate the response index outputs for the TWRA. Flame length characteristics are varied in the Florence area but it should be noted that they are significantly greater than other areas in the County with more than one half of the area having flame lengths predominantly in the 4-8 foot range (54.7%), 15.2% of the area is designated as having flame lengths of 0-2 feet, 2.2% of the area with flame lengths projected at 2-4 feet at only 4.9% of the area considered to be non-burnable.

Flame length is a fire behavior output, which is influenced by three environmental factors - fuels, weather, and topography. Weather is by far the most dynamic variable as it changes frequently. To account for this variability, four percentile weather categories were created from historical weather observations to represent low, moderate, high, and extreme weather days for each weather influence zone in Texas. A weather influence zone is an area where, for analysis purposes, the weather on any given day is considered uniform. There are 22 weather influence zones in the State of Texas.

Figure 5. Flame Length



Flame Length

	Flame Length	Acres	Percent
	Non-Burnable	3,868	4.9 %
	0 - 2 ft.	11,965	15.2 %
	2 - 4 ft.	1,699	2.2 %
	4 - 8 ft.	43,009	54.7 %
	8 - 12 ft.	347	0.4 %
	12 - 20 ft.	18	0.0 %
	20 - 30 ft.	8,115	10.3 %
	30 + ft.	9,639	12.3 %
Total:		78,659	100.0 %

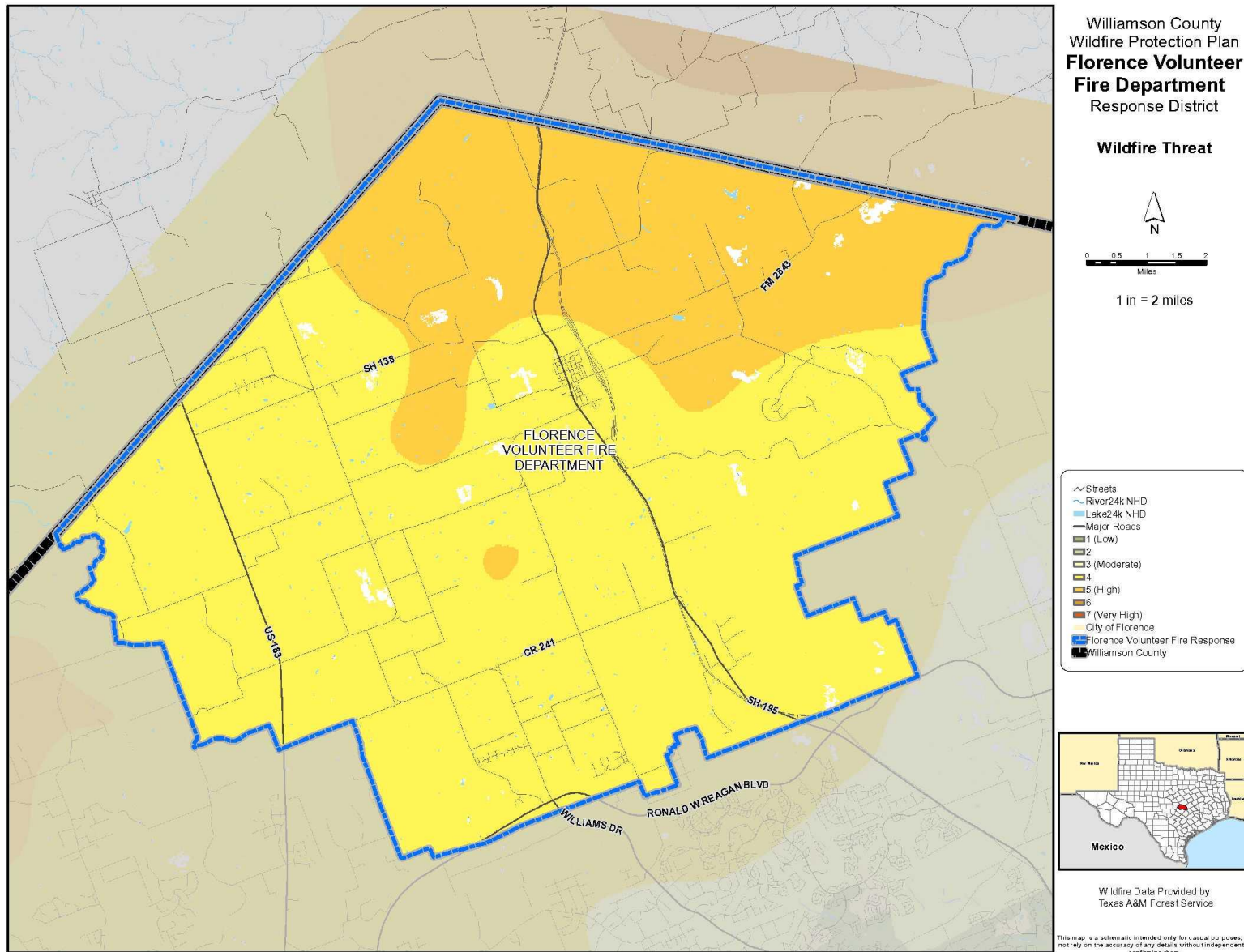
Wildfire Threat

Per the Texas A&M Forest Service Wildfire Threat is the likelihood of a wildfire occurring or burning into an area. Threat is derived by combining a number of landscape characteristics including surface fuels and canopy fuels, resultant fire behavior, historical fire occurrence, percentile weather derived from historical weather observations, and terrain conditions. These inputs are combined using analysis techniques based on established fire science.

The measure of wildfire threat used in the Texas Wildfire Risk Assessment (TWRA) is called Wildland Fire Susceptibility Index, or WFSI. WFSI combines the probability of an acre igniting (Wildfire Ignition Density) and the expected final fire size based on rate of spread in four weather percentile categories. WFSI is defined as the likelihood of an acre burning. Since all areas in Texas have WFSI calculated consistently, it allows for comparison and ordination of areas across the entire state. For example, a high threat area in East Texas is equivalent to a high threat area in West Texas.

To aid in the use of Wildfire Threat for planning activities, the output values are categorized into seven (7) classes. These are given general descriptions from Low to Very High threat. It is important to note that 99.1% of the area within Florence is designated as Moderate to High for wildfire threat. The highest in the County. The balance of the area or 0.9 % is designated as low (categories 1).

Figure 6. Wildfire Threat



	Class	Acres	Percent
	Non-Burnable	719	0.9 %
	3 (Moderate)	2	0.0 %
	4	55,604	70.7 %
	5 (High)	22,335	28.4 %
Total:		78,659	100.0 %

WILDFIRE MITIGATION ACTIONS

Mitigation strategies identified in the CWPP for moderate to extreme risk communities include:

- Peacn Branch Subdivision
 - Identify alternate water supply sources during high fire danger
 - Deliver Firewise and Ready, Set, Go! (RSG) educational materials to homeowners
 - Consider future landscape-level hazardous fuels treatments that will reduce potential wildfire behavior by removing dead standing shrub fuels and ladder fuels. Initial fuel treatments should target heavy fuels along the roadway.
 - A plan for construction of a second escape route road to facilitate evacuation of local residents and improve fire department access, if the opportunity arises.
- The Vineyard at Florence
 - Reestablish the community as a recognized Firewise community (Firewise-2008) and promote RSG principles to residents.
 - Encourage residents to adhere to defensible space practices, cultivation of fire resistive ornamental plants, and reduction of structural ignitability in accordance with Firewise guidelines.
 - Identify potential hazardous fuels reduction projects and plan for a secondary means of egress in the event of an emergency by establishing a second emergency roadway exiting the subdivision.
 - Ensure that all residential address are marked and street signs are made of non-flammable material.
- Department of Public Safety Training Facility
 - Adapt 30,000 gallon in-ground water tank for fire department use
 - Treat hazardous fuel buildup by using of prescribe fire and establishing fire breaks around designated burn units.
 - Restrict driving and parking off road during times of extreme drought and when light fuels (grasses) are dry. Preferred off road use times would be early morning or night time hours when relative humidity is high.
 - Maintain defensible around all structures.
 - Create a series of off road trails that will serve as an off road training course and control lines for prescribed burn units. Prescribed burns will be conducted in a designated burn units in the future. The initial fuels project occurred in 2015 and consisted of 13,000 feet of 25 foot width dozer line.
- Mission Oaks / Windmill Ranch Developments
 - Encourage residents to practice Firewise and RSG principles.
 - Consider landscape-level hazardous fuels treatments.

- Target initial fuels treatments along roads to provide for improved safe access and strategic fire control lines.
- “Flag pole” Communities
 - Encourage local residents to practice Firewise and RSG principles.
 - Educate residents to the benefits of hazardous fuels reduction and encourage residents to work together toward landscape-level hazardous fuels mitigation projects that benefit the entire community.
 - Practice safe debris burning techniques.
- Wades Crossing
 - Encourage residents to practice Firewise and RSG practices.
 - Educate residents to the benefits of hazardous fuel reduction treatments.
 - Focus initial hazardous fuels treatments in high impact areas along roadsides and the western boundary of the subdivision.
 - Establish a new fire station in Andice to reduce fire department response times.
- West Ridge
 - Encourage local residents to practice Firewise and RSG principles.
 - Educate residents to the benefits of hazardous fuels reduction and encourage residents to work together toward landscape-level hazardous fuels mitigation projects that benefit the entire community.
 - Practice safe debris burning techniques.
- Chapel View Subdivision
 - Encourage residents to practice Firewise and RSG principles.
 - Plan possible future hazardous fuel reduction treatments.
 - Use noncombustible signage for roadway, driveways, etc.
 - Prune trees along the roadways and driveways for emergency vehicles clearance and reduction of ladder fuels.
 - Establish an emergency access plan by installing a Knox box for emergency responders.
- Ramm’s Road Subdivision
 - Encourage local residents to practice Firewise and RSG principles.
 - Educate residents to the benefits of hazardous fuels reduction and encourage residents to work together toward landscape-level hazardous fuels mitigation projects that benefit the entire community.
 - Focus initial hazardous fuels projects on high impact areas near structures and roads that improve access and strategic fire control lines.
 - Practice safe debris burning techniques.
- City of Florence
 - Encourage city residents to practice Firewise and RSG principles.
 - Plan future hazardous fuels mitigation projects within the city limits and extraterritorial jurisdiction.
 - Focus initial hazardous fuels treatments on high impact areas of the city near high value infrastructure and buildings.
 - Yard debris pick up at regular intervals, to reduce build up along streets and next to houses.
 - Possible incentives by city to encourage yard maintenance, such as a recognition program or tax incentive.
 - City Park: (corner of Bizendine and Ledger) Dead tree removal, tall grass reduction and basic clean up around old building to reduce fuel.
 - Dead tree removal and general vegetation clean up
 - Recommend storing firewood at least 30’ from structures.
 - Recommend vegetation be set back from structures or pruned back so not touching roof.

- Community of Andice
 - Encourage residents to practice Firewise and RSG principles.
 - Plan future hazardous fuels mitigation projects within the community.
 - Focus initial hazardous fuels treatments on high impact areas of the community near high value infrastructure and buildings.

Mitigation strategies identified in the Hazard Mitigation Plan that address wildfire:

- Upgrade alert system and disseminate information on warnings
- Update building codes to 2012 International Building Codes
- Increase capability of fire suppression, equipment and training
- Strengthen zoning ordinance to encourage higher densities only outside of known hazard areas
- Develop a Capital Improvements Plan

Mitigation Action Worksheets for strategies identified above and others follows:

Name of Jurisdiction: Community of Andice Mitigation Action #: 1

Mitigation Action Title: Practice Firewise and RSG principles.

Assessing the Risk	
Hazard(s) addressed: (check all that apply)	<input checked="" type="checkbox"/> Wildfire <input type="checkbox"/> All Hazards <input checked="" type="checkbox"/> Drought <input checked="" type="checkbox"/> Extreme Heat <input type="checkbox"/> Flood <input type="checkbox"/> Lightning <input type="checkbox"/> Thunderstorm <input checked="" type="checkbox"/> Tornado <input checked="" type="checkbox"/> Wind <input type="checkbox"/> Winter Weather
Specific problem being Mitigated (describe why action is needed)	Historically important places in and around Andice community. Catholic Church, fellowship hall and education building in the center of the community as well as the Baptist church and Andice Cemetery. Extended fire department response time from Florence to Andice (15-20 minute ETA).
Evaluation of Potential Alternatives	
Alternatives Considered (name of project and reason for not selecting)	1. Practice Firewise and RSG principles. Educate 2. Work with City and County officials 3. No Action.
Action/Project Intended for Implementation	
Describe how action will be implemented (main steps involved)	Encourage city residents to practice Firewise and RSG principles. Plan future hazardous fuels mitigation projects within the city limits and extraterritorial jurisdiction. Focus initial hazardous fuels treatments on high impact areas of the city near high value infrastructure and buildings.
Action/Project Type	<input checked="" type="checkbox"/> Local Plans and Regulations <input type="checkbox"/> Structure and Infrastructure Project <input checked="" type="checkbox"/> Natural Systems Protection <input checked="" type="checkbox"/> Education and Awareness Programs
Applicable Goals/Objectives (refer to list of goals/objectives)	<input checked="" type="checkbox"/> Goal #1 <input checked="" type="checkbox"/> Goal #2 <input checked="" type="checkbox"/> Goal #3 <input checked="" type="checkbox"/> Goal #4 Objective: 1,2,3,4,5
Applies to existing or future development	<input type="checkbox"/> Existing Development <input type="checkbox"/> Future Development <input checked="" type="checkbox"/> Both Existing and Future Development <input type="checkbox"/> Not Applicable
Describe benefits (losses avoided)	<input checked="" type="checkbox"/> Life Safety <input checked="" type="checkbox"/> Damage Reduction <input type="checkbox"/> Other Describe: Comprehensive education will result in enhanced life safety and property protection.
Estimated Cost	<input checked="" type="checkbox"/> < \$10,000; <input type="checkbox"/> \$10,000 to \$100,000; <input type="checkbox"/> > \$100,000 Other Amount: \$
Plan for Implementation	
Responsible Department	
Local Planning Mechanism (check all that apply)	<input type="checkbox"/> CWPP <input type="checkbox"/> Capital Improvement Plan <input type="checkbox"/> Comprehensive Plan <input type="checkbox"/> Building Code <input type="checkbox"/> Ordinance <input type="checkbox"/> Other:
Potential Funding Sources	
Timeline for Completion	<input type="checkbox"/> Short Term (1-5 yrs.) <input type="checkbox"/> Long Term (>5 yrs.) <input type="checkbox"/> Ongoing
Reporting on Progress	
Status/Comment	<input type="checkbox"/> Not Started <input type="checkbox"/> In-progress <input type="checkbox"/> Delayed <input type="checkbox"/> Completed <input type="checkbox"/> No Longer Required Comment:
Completed by: (name, title, phone #)	

Name of Jurisdiction: Chapel View Subdivision Mitigation Action #: 1Mitigation Action Title: Practice Firewise and RSG practices

Assessing the Risk	
Hazard(s) addressed: (check all that apply)	<input checked="" type="checkbox"/> Wildfire <input checked="" type="checkbox"/> All Hazards <input checked="" type="checkbox"/> Drought <input checked="" type="checkbox"/> Extreme Heat <input type="checkbox"/> Flood <input checked="" type="checkbox"/> Lightning <input type="checkbox"/> Thunderstorm <input checked="" type="checkbox"/> Tornado <input checked="" type="checkbox"/> Wind <input checked="" type="checkbox"/> Winter Weather
Specific problem being Mitigated (describe why action is needed)	Response time, multi-locked gates and large amount of drought killed trees.
Evaluation of Potential Alternatives	
Alternatives Considered (name of project and reason for not selecting)	4. Encourage residents to practice Firewise, RSG practices and fuel treatments
	5. Work with City and County officials
	6. No Action.
Action/Project Intended for Implementation	
Describe how action will be implemented (main steps involved)	Encourage residents to practice Firewise and RSG principles. Plan possible future hazardous fuel reduction treatments. Prune trees along the roadways and driveways for emergency vehicles clearance and reduction of ladder fuels.
Action/Project Type	<input checked="" type="checkbox"/> Local Plans and Regulations <input type="checkbox"/> Structure and Infrastructure Project <input checked="" type="checkbox"/> Natural Systems Protection <input checked="" type="checkbox"/> Education and Awareness Programs
Applicable Goals/Objectives (refer to list of goals/objectives)	<input checked="" type="checkbox"/> Goal #1 <input checked="" type="checkbox"/> Goal #2 <input checked="" type="checkbox"/> Goal #3 <input checked="" type="checkbox"/> Goal #4 Objective: 1,2,3,4,5
Applies to existing or future development	<input type="checkbox"/> Existing Development <input type="checkbox"/> Future Development <input checked="" type="checkbox"/> Both Existing and Future Development <input type="checkbox"/> Not Applicable
Describe benefits (losses avoided)	<input checked="" type="checkbox"/> Life Safety <input checked="" type="checkbox"/> Damage Reduction <input type="checkbox"/> Other Describe: Comprehensive education will result in enhanced life safety and property protection.
Estimated Cost	<input checked="" type="checkbox"/> < \$10,000; <input type="checkbox"/> \$10,000 to \$100,000; <input type="checkbox"/> > \$100,000 Other Amount: \$
Plan for Implementation	
Responsible Department	
Local Planning Mechanism (check all that apply)	<input type="checkbox"/> CWPP <input type="checkbox"/> Capital Improvement Plan <input type="checkbox"/> Comprehensive Plan <input type="checkbox"/> Building Code <input type="checkbox"/> Ordinance <input type="checkbox"/> Other:
Potential Funding Sources	
Timeline for Completion	<input type="checkbox"/> Short Term (1-5 yrs.) <input type="checkbox"/> Long Term (>5 yrs.) <input type="checkbox"/> Ongoing
Reporting on Progress	
Status/Comment	<input type="checkbox"/> Not Started <input type="checkbox"/> In-progress <input type="checkbox"/> Delayed <input type="checkbox"/> Completed <input type="checkbox"/> No Longer Required Comment:
Completed by: (name, title, phone #)	

Name of Jurisdiction: Chapel View Subdivision Mitigation Action #: 1

Mitigation Action Title: Establish an emergency access plan

Assessing the Risk	
Hazard(s) addressed: (check all that apply)	<input checked="" type="checkbox"/> Wildfire <input checked="" type="checkbox"/> All Hazards <input checked="" type="checkbox"/> Drought <input checked="" type="checkbox"/> Extreme Heat <input checked="" type="checkbox"/> Flood <input checked="" type="checkbox"/> Lightning <input checked="" type="checkbox"/> Thunderstorm <input checked="" type="checkbox"/> Tornado <input checked="" type="checkbox"/> Wind <input checked="" type="checkbox"/> Winter Weather
Specific problem being Mitigated (describe why action is needed)	Response time, multi-locked gates and large amount of drought killed trees.
Evaluation of Potential Alternatives	
Alternatives Considered (name of project and reason for not selecting)	7. Establish an emergency access plan
	8. Work with City and County officials
	9. No Action.
Action/Project Intended for Implementation	
Describe how action will be implemented (main steps involved)	Establish an emergency access plan by installing a Knox box for emergency responders. Use noncombustible signage for roadway, driveways, etc.
Action/Project Type	<input checked="" type="checkbox"/> Local Plans and Regulations <input checked="" type="checkbox"/> Structure and Infrastructure Project <input checked="" type="checkbox"/> Natural Systems Protection <input type="checkbox"/> Education and Awareness Programs
Applicable Goals/Objectives (refer to list of goals/objectives)	<input checked="" type="checkbox"/> Goal #1 <input checked="" type="checkbox"/> Goal #2 <input type="checkbox"/> Goal #3 <input type="checkbox"/> Goal #4 Objective: 3,4
Applies to existing or future development	<input type="checkbox"/> Existing Development <input type="checkbox"/> Future Development <input checked="" type="checkbox"/> Both Existing and Future Development <input type="checkbox"/> Not Applicable
Describe benefits (losses avoided)	<input checked="" type="checkbox"/> Life Safety <input checked="" type="checkbox"/> Damage Reduction <input type="checkbox"/> Other Describe: Comprehensive education will result in enhanced life safety and property protection.
Estimated Cost	<input type="checkbox"/> < \$10,000; <input checked="" type="checkbox"/> \$10,000 to \$100,000; <input type="checkbox"/> > \$100,000 Other Amount: \$
Plan for Implementation	
Responsible Department	
Local Planning Mechanism (check all that apply)	<input type="checkbox"/> CWPP <input type="checkbox"/> Capital Improvement Plan <input type="checkbox"/> Comprehensive Plan <input type="checkbox"/> Building Code <input type="checkbox"/> Ordinance <input type="checkbox"/> Other:
Potential Funding Sources	
Timeline for Completion	<input type="checkbox"/> Short Term (1-5 yrs.) <input type="checkbox"/> Long Term (>5 yrs.) <input type="checkbox"/> Ongoing
Reporting on Progress	
Status/Comment	<input type="checkbox"/> Not Started <input type="checkbox"/> In-progress <input type="checkbox"/> Delayed <input type="checkbox"/> Completed <input type="checkbox"/> No Longer Required Comment:
Completed by: (name, title, phone #)	

Name of Jurisdiction: City of Florence Mitigation Action #: 1Mitigation Action Title: Practice Firewise and RSG principles.

Assessing the Risk	
Hazard(s) addressed: (check all that apply)	<input checked="" type="checkbox"/> Wildfire <input type="checkbox"/> All Hazards <input checked="" type="checkbox"/> Drought <input checked="" type="checkbox"/> Extreme Heat <input type="checkbox"/> Flood <input type="checkbox"/> Lightning <input type="checkbox"/> Thunderstorm <input checked="" type="checkbox"/> Tornado <input checked="" type="checkbox"/> Wind <input type="checkbox"/> Winter Weather
Specific problem being Mitigated (describe why action is needed)	WUI surrounding the city limits. Increased wildfire ignition potential due to close proximity to SH 195 on the east side of the city.
Evaluation of Potential Alternatives	
Alternatives Considered (name of project and reason for not selecting)	10. Practice Firewise and RSG principles. Educate
	11. Work with City and County officials
	12. No Action.
Action/Project Intended for Implementation	
Describe how action will be implemented (main steps involved)	Encourage city residents to practice Firewise and RSG principles. Plan future hazardous fuels mitigation projects within the city limits and extraterritorial jurisdiction. Focus initial hazardous fuels treatments on high impact areas of the city near high value infrastructure and buildings.
Action/Project Type	<input checked="" type="checkbox"/> Local Plans and Regulations <input type="checkbox"/> Structure and Infrastructure Project <input checked="" type="checkbox"/> Natural Systems Protection <input checked="" type="checkbox"/> Education and Awareness Programs
Applicable Goals/Objectives (refer to list of goals/objectives)	<input checked="" type="checkbox"/> Goal #1 <input checked="" type="checkbox"/> Goal #2 <input checked="" type="checkbox"/> Goal #3 <input checked="" type="checkbox"/> Goal #4 Objective: 1,2,3,4,5
Applies to existing or future development	<input type="checkbox"/> Existing Development <input type="checkbox"/> Future Development <input checked="" type="checkbox"/> Both Existing and Future Development <input type="checkbox"/> Not Applicable
Describe benefits (losses avoided)	<input checked="" type="checkbox"/> Life Safety <input checked="" type="checkbox"/> Damage Reduction <input type="checkbox"/> Other Describe: Comprehensive education will result in enhanced life safety and property protection.
Estimated Cost	<input checked="" type="checkbox"/> < \$10,000; <input type="checkbox"/> \$10,000 to \$100,000; <input type="checkbox"/> > \$100,000 Other Amount: \$
Plan for Implementation	
Responsible Department	
Local Planning Mechanism (check all that apply)	<input type="checkbox"/> CWPP <input type="checkbox"/> Capital Improvement Plan <input type="checkbox"/> Comprehensive Plan <input type="checkbox"/> Building Code <input type="checkbox"/> Ordinance <input type="checkbox"/> Other:
Potential Funding Sources	
Timeline for Completion	<input type="checkbox"/> Short Term (1-5 yrs.) <input type="checkbox"/> Long Term (>5 yrs.) <input type="checkbox"/> Ongoing
Reporting on Progress	
Status/Comment	<input type="checkbox"/> Not Started <input type="checkbox"/> In-progress <input type="checkbox"/> Delayed <input type="checkbox"/> Completed <input type="checkbox"/> No Longer Required Comment:
Completed by: (name, title, phone #)	

Name of Jurisdiction: Department of Public Safety Training Facility Mitigation Action #: 1

Mitigation Action Title: Treat hazardous fuel buildup and establish fire breaks

Assessing the Risk	
Hazard(s) addressed: (check all that apply)	<input checked="" type="checkbox"/> Wildfire <input type="checkbox"/> All Hazards <input checked="" type="checkbox"/> Drought <input checked="" type="checkbox"/> Extreme Heat <input type="checkbox"/> Flood <input type="checkbox"/> Lightning <input type="checkbox"/> Thunderstorm <input type="checkbox"/> Tornado <input type="checkbox"/> Wind <input type="checkbox"/> Winter Weather
Specific problem being Mitigated (describe why action is needed)	Natural areas surrounding the property with history of large fires (Florence Fire - 2008). Significant amount of residual dead fuel loading resulting from the 2008 fire and 2011 drought killed trees. Greater wildfire ignition potential from increased human activity on and surrounding the facility.
Evaluation of Potential Alternatives	
Alternatives Considered (name of project and reason for not selecting)	13. Treat hazardous fuel buildup and establish fire breaks
	14. Work with City and County officials
	15. No Action.
Action/Project Intended for Implementation	
Describe how action will be implemented (main steps involved)	Treat hazardous fuel buildup by using of prescribe fire and establishing fire breaks around designated burn units. Restrict driving and parking off road during times of extreme drought and when light fuels (grasses) are dry. Preferred off road use times would be early morning or night time hours when relative humidity is high. Maintain defensible around all structures.
Action/Project Type	<input checked="" type="checkbox"/> Local Plans and Regulations <input checked="" type="checkbox"/> Structure and Infrastructure Project <input checked="" type="checkbox"/> Natural Systems Protection <input checked="" type="checkbox"/> Education and Awareness Programs
Applicable Goals/Objectives (refer to list of goals/objectives)	<input checked="" type="checkbox"/> Goal #1 <input checked="" type="checkbox"/> Goal #2 <input checked="" type="checkbox"/> Goal #3 <input checked="" type="checkbox"/> Goal #4 Objective: 1,2,3,4,5
Applies to existing or future development	<input type="checkbox"/> Existing Development <input type="checkbox"/> Future Development <input checked="" type="checkbox"/> Both Existing and Future Development <input type="checkbox"/> Not Applicable
Describe benefits (losses avoided)	<input checked="" type="checkbox"/> Life Safety <input checked="" type="checkbox"/> Damage Reduction <input type="checkbox"/> Other Describe: Comprehensive education will result in enhanced life safety and property protection.
Estimated Cost	<input type="checkbox"/> < \$10,000; <input checked="" type="checkbox"/> \$10,000 to \$100,000; <input type="checkbox"/> > \$100,000 Other Amount: \$
Plan for Implementation	
Responsible Department	
Local Planning Mechanism (check all that apply)	<input type="checkbox"/> CWPP <input type="checkbox"/> Capital Improvement Plan <input type="checkbox"/> Comprehensive Plan <input type="checkbox"/> Building Code <input type="checkbox"/> Ordinance <input type="checkbox"/> Other:
Potential Funding Sources	
Timeline for Completion	<input type="checkbox"/> Short Term (1-5 yrs.) <input type="checkbox"/> Long Term (>5 yrs.) <input type="checkbox"/> Ongoing
Reporting on Progress	
Status/Comment	<input type="checkbox"/> Not Started <input type="checkbox"/> In-progress <input type="checkbox"/> Delayed <input type="checkbox"/> Completed <input type="checkbox"/> No Longer Required Comment:
Completed by: (name, title, phone #)	

Name of Jurisdiction: Flagpole Communities Mitigation Action #: 1Mitigation Action Title: Practice Firewise and RSG principles

Assessing the Risk	
Hazard(s) addressed: (check all that apply)	<input checked="" type="checkbox"/> Wildfire <input type="checkbox"/> All Hazards <input checked="" type="checkbox"/> Drought <input type="checkbox"/> Extreme Heat <input type="checkbox"/> Flood <input type="checkbox"/> Lightning <input type="checkbox"/> Thunderstorm <input checked="" type="checkbox"/> Tornado <input type="checkbox"/> Wind <input checked="" type="checkbox"/> Winter Weather
Specific problem being Mitigated (describe why action is needed)	Access is the biggest concern. Multiple residential fences create access problems that hamper fire suppress efforts (especially chain length fencing). Maintenance of private roads is also a problem due to determining financial responsibility among multiple landowners.
Evaluation of Potential Alternatives	
Alternatives Considered (name of project and reason for not selecting)	16. Encourage residents to practice Firewise and RSG principles. Practice safe debris burning techniques.
	17. Work with City and County officials
	18. No Action.
Action/Project Intended for Implementation	
Describe how action will be implemented (main steps involved)	Encourage local residents to practice Firewise and RSG principles. Educate residents to the benefits of hazardous fuels reduction and encourage residents to work together toward landscape-level hazardous fuels mitigation projects that benefit the entire community. Practice safe debris burning techniques.
Action/Project Type	<input checked="" type="checkbox"/> Local Plans and Regulations <input type="checkbox"/> Structure and Infrastructure Project <input checked="" type="checkbox"/> Natural Systems Protection <input checked="" type="checkbox"/> Education and Awareness Programs
Applicable Goals/Objectives (refer to list of goals/objectives)	<input checked="" type="checkbox"/> Goal #1 <input checked="" type="checkbox"/> Goal #2 <input checked="" type="checkbox"/> Goal #3 <input checked="" type="checkbox"/> Goal #4 Objective: 1,2,3,4,5
Applies to existing or future development	<input type="checkbox"/> Existing Development <input type="checkbox"/> Future Development <input checked="" type="checkbox"/> Both Existing and Future Development <input type="checkbox"/> Not Applicable
Describe benefits (losses avoided)	<input checked="" type="checkbox"/> Life Safety <input checked="" type="checkbox"/> Damage Reduction <input type="checkbox"/> Other Describe: Comprehensive education will result in enhanced life safety and property protection.
Estimated Cost	<input checked="" type="checkbox"/> < \$10,000; <input type="checkbox"/> \$10,000 to \$100,000; <input type="checkbox"/> > \$100,000 Other Amount: \$
Plan for Implementation	
Responsible Department	
Local Planning Mechanism (check all that apply)	<input type="checkbox"/> CWPP <input type="checkbox"/> Capital Improvement Plan <input type="checkbox"/> Comprehensive Plan <input type="checkbox"/> Building Code <input type="checkbox"/> Ordinance <input type="checkbox"/> Other:
Potential Funding Sources	
Timeline for Completion	<input type="checkbox"/> Short Term (1-5 yrs.) <input type="checkbox"/> Long Term (>5 yrs.) <input type="checkbox"/> Ongoing
Reporting on Progress	
Status/Comment	<input type="checkbox"/> Not Started <input type="checkbox"/> In-progress <input type="checkbox"/> Delayed <input type="checkbox"/> Completed <input type="checkbox"/> No Longer Required Comment:
Completed by: (name, title, phone #)	

Name of Jurisdiction: Mission Oaks/ Windmill Ranch Developments Mitigation Action #: 1

Mitigation Action Title: Rain water collection

Assessing the Risk	
Hazard(s) addressed: (check all that apply)	<input checked="" type="checkbox"/> Wildfire <input type="checkbox"/> All Hazards <input checked="" type="checkbox"/> Drought <input checked="" type="checkbox"/> Extreme Heat <input type="checkbox"/> Flood <input type="checkbox"/> Lightning <input type="checkbox"/> Thunderstorm <input checked="" type="checkbox"/> Tornado <input type="checkbox"/> Wind <input checked="" type="checkbox"/> Winter Weather
Specific problem being Mitigated (describe why action is needed)	Limited water supply. Fire Department may consider looking into rain water collection to supplement fire protection water supply on private properties. (Must be at least 5,000 gallons to make it feasible for the fire department to use).
Evaluation of Potential Alternatives	
Alternatives Considered (name of project and reason for not selecting)	19. Rain water collection
	20. Work with City and County officials
	21. No Action.
Action/Project Intended for Implementation	
Describe how action will be implemented (main steps involved)	Fire Department may consider looking into rain water collection to supplement fire protection water supply on private properties. (Must be at least 5,000 gallons to make it feasible for the fire department to use).
Action/Project Type	<input checked="" type="checkbox"/> Local Plans and Regulations <input checked="" type="checkbox"/> Structure and Infrastructure Project <input checked="" type="checkbox"/> Natural Systems Protection <input type="checkbox"/> Education and Awareness Programs
Applicable Goals/Objectives (refer to list of goals/objectives)	<input checked="" type="checkbox"/> Goal #1 <input checked="" type="checkbox"/> Goal #2 <input type="checkbox"/> Goal #3 <input type="checkbox"/> Goal #4 Objective: 3,4
Applies to existing or future development	<input type="checkbox"/> Existing Development <input type="checkbox"/> Future Development <input checked="" type="checkbox"/> Both Existing and Future Development <input type="checkbox"/> Not Applicable
Describe benefits (losses avoided)	<input checked="" type="checkbox"/> Life Safety <input checked="" type="checkbox"/> Damage Reduction <input type="checkbox"/> Other Describe: Comprehensive education will result in enhanced life safety and property protection.
Estimated Cost	<input checked="" type="checkbox"/> < \$10,000; <input type="checkbox"/> \$10,000 to \$100,000; <input type="checkbox"/> > \$100,000 Other Amount: \$
Plan for Implementation	
Responsible Department	
Local Planning Mechanism (check all that apply)	<input type="checkbox"/> CWPP <input type="checkbox"/> Capital Improvement Plan <input type="checkbox"/> Comprehensive Plan <input type="checkbox"/> Building Code <input type="checkbox"/> Ordinance <input type="checkbox"/> Other:
Potential Funding Sources	
Timeline for Completion	<input type="checkbox"/> Short Term (1-5 yrs.) <input type="checkbox"/> Long Term (>5 yrs.) <input type="checkbox"/> Ongoing
Reporting on Progress	
Status/Comment	<input type="checkbox"/> Not Started <input type="checkbox"/> In-progress <input type="checkbox"/> Delayed <input type="checkbox"/> Completed <input type="checkbox"/> No Longer Required Comment:
Completed by: (name, title, phone #)	

Name of Jurisdiction: Mission Oaks/ Windmill Ranch Developments Mitigation Action #: 2

Mitigation Action Title: Fuel treatments along roads to provide for improved safe access and strategic fire control lines.

Assessing the Risk	
Hazard(s) addressed: (check all that apply)	<input checked="" type="checkbox"/> Wildfire <input type="checkbox"/> All Hazards <input checked="" type="checkbox"/> Drought <input checked="" type="checkbox"/> Extreme Heat <input type="checkbox"/> Flood <input type="checkbox"/> Lightning <input type="checkbox"/> Thunderstorm <input checked="" type="checkbox"/> Tornado <input type="checkbox"/> Wind <input checked="" type="checkbox"/> Winter Weather
Specific problem being Mitigated (describe why action is needed)	Limited water supply and fuel build-up on roadways
Evaluation of Potential Alternatives	
Alternatives Considered (name of project and reason for not selecting)	22. Encourage residents to practice Firewise and RSG principles. Consider landscape-level hazardous fuels treatments.
	23. Work with City and County officials
	24. No Action.
Action/Project Intended for Implementation	
Describe how action will be implemented (main steps involved)	Encourage residents to practice Firewise and RSG principles. Consider landscape-level hazardous fuels treatments. Target initial fuels treatments along roads to provide for improved safe access and strategic fire control lines.
Action/Project Type	<input checked="" type="checkbox"/> Local Plans and Regulations <input checked="" type="checkbox"/> Structure and Infrastructure Project <input checked="" type="checkbox"/> Natural Systems Protection <input checked="" type="checkbox"/> Education and Awareness Programs
Applicable Goals/Objectives (refer to list of goals/objectives)	<input checked="" type="checkbox"/> Goal #1 <input checked="" type="checkbox"/> Goal #2 <input checked="" type="checkbox"/> Goal #3 <input checked="" type="checkbox"/> Goal #4 Objective: 1,2,3,4,5
Applies to existing or future development	<input type="checkbox"/> Existing Development <input type="checkbox"/> Future Development <input checked="" type="checkbox"/> Both Existing and Future Development <input type="checkbox"/> Not Applicable
Describe benefits (losses avoided)	<input checked="" type="checkbox"/> Life Safety <input checked="" type="checkbox"/> Damage Reduction <input type="checkbox"/> Other Describe: Comprehensive education will result in enhanced life safety and property protection.
Estimated Cost	<input checked="" type="checkbox"/> < \$10,000; <input type="checkbox"/> \$10,000 to \$100,000; <input type="checkbox"/> > \$100,000 Other Amount: \$
Plan for Implementation	
Responsible Department	
Local Planning Mechanism (check all that apply)	<input type="checkbox"/> CWPP <input type="checkbox"/> Capital Improvement Plan <input type="checkbox"/> Comprehensive Plan <input type="checkbox"/> Building Code <input type="checkbox"/> Ordinance <input type="checkbox"/> Other:
Potential Funding Sources	
Timeline for Completion	<input type="checkbox"/> Short Term (1-5 yrs.) <input type="checkbox"/> Long Term (>5 yrs.) <input type="checkbox"/> Ongoing
Reporting on Progress	
Status/Comment	<input type="checkbox"/> Not Started <input type="checkbox"/> In-progress <input type="checkbox"/> Delayed <input type="checkbox"/> Completed <input type="checkbox"/> No Longer Required Comment:
Completed by: (name, title, phone #)	

Name of Jurisdiction: Pecan Branch Subdivision Mitigation Action #: 1Mitigation Action Title: Firewise and Ready, Set, Go! (RSG) educational material

Assessing the Risk	
Hazard(s) addressed: (check all that apply)	<input checked="" type="checkbox"/> Wildfire <input type="checkbox"/> All Hazards <input type="checkbox"/> Drought <input type="checkbox"/> Extreme Heat <input type="checkbox"/> Flood <input type="checkbox"/> Lightning <input type="checkbox"/> Thunderstorm <input type="checkbox"/> Tornado <input type="checkbox"/> Wind <input type="checkbox"/> Winter Weather
Specific problem being Mitigated (describe why action is needed)	Narrow roads without turn around for firefighting equipment. Evacuation may be difficult due to one way in/out. Large amounts of dead vegetation and rough terrain. No homeowner association.
Evaluation of Potential Alternatives	
Alternatives Considered (name of project and reason for not selecting)	25. Deliver Firewise and Ready, Set, Go! (RSG) educational materials to homeowners
	26.
	27. No Action.
Action/Project Intended for Implementation	
Describe how action will be implemented (main steps involved)	Deliver Firewise and Ready, Set, Go! (RSG) educational materials to homeowners
Action/Project Type	<input type="checkbox"/> Local Plans and Regulations <input type="checkbox"/> Structure and Infrastructure Project <input type="checkbox"/> Natural Systems Protection <input checked="" type="checkbox"/> Education and Awareness Programs
Applicable Goals/Objectives (refer to list of goals/objectives)	<input checked="" type="checkbox"/> Goal #1 <input type="checkbox"/> Goal #2 <input type="checkbox"/> Goal #3 <input checked="" type="checkbox"/> Goal #4 Objective: 5
Applies to existing or future development	<input type="checkbox"/> Existing Development <input type="checkbox"/> Future Development <input checked="" type="checkbox"/> Both Existing and Future Development <input type="checkbox"/> Not Applicable
Describe benefits (losses avoided)	<input checked="" type="checkbox"/> Life Safety <input checked="" type="checkbox"/> Damage Reduction <input type="checkbox"/> Other Describe: Comprehensive education will result in enhanced life safety and property protection.
Estimated Cost	<input checked="" type="checkbox"/> < \$10,000; <input type="checkbox"/> \$10,000 to \$100,000; <input type="checkbox"/> > \$100,000 Other Amount: \$
Plan for Implementation	
Responsible Department	
Local Planning Mechanism (check all that apply)	<input type="checkbox"/> CWPP <input type="checkbox"/> Capital Improvement Plan <input type="checkbox"/> Comprehensive Plan <input type="checkbox"/> Building Code <input type="checkbox"/> Ordinance <input type="checkbox"/> Other:
Potential Funding Sources	
Timeline for Completion	<input type="checkbox"/> Short Term (1-5 yrs.) <input type="checkbox"/> Long Term (>5 yrs.) <input type="checkbox"/> Ongoing
Reporting on Progress	
Status/Comment	<input type="checkbox"/> Not Started <input type="checkbox"/> In-progress <input type="checkbox"/> Delayed <input type="checkbox"/> Completed <input type="checkbox"/> No Longer Required Comment:
Completed by: (name, title, phone #)	

Name of Jurisdiction: Pecan Branch Subdivision Mitigation Action #: 2Mitigation Action Title: Fuel Treatments

Assessing the Risk	
Hazard(s) addressed: (check all that apply)	<input checked="" type="checkbox"/> Wildfire <input checked="" type="checkbox"/> All Hazards <input checked="" type="checkbox"/> Drought <input checked="" type="checkbox"/> Extreme Heat <input checked="" type="checkbox"/> Flood <input checked="" type="checkbox"/> Lightning <input checked="" type="checkbox"/> Thunderstorm <input checked="" type="checkbox"/> Tornado <input checked="" type="checkbox"/> Wind <input checked="" type="checkbox"/> Winter Weather
Specific problem being Mitigated (describe why action is needed)	Narrow roads without turn around for firefighting equipment. Evacuation may be difficult due to one way in/out. Large amounts of dead vegetation and rough terrain. No homeowner association.
Evaluation of Potential Alternatives	
Alternatives Considered (name of project and reason for not selecting)	28. Reduce potential wildfire behavior by removing dead standing shrub fuels and ladder fuels
	29. Form HOA to follow up with homeowners and public works
	30. No Action.
Action/Project Intended for Implementation	
Describe how action will be implemented (main steps involved)	Consider future landscape-level hazardous fuels treatments that will reduce potential wildfire behavior by removing dead standing shrub fuels and ladder fuels. Initial fuel treatments should target heavy fuels along the roadway
Action/Project Type	<input checked="" type="checkbox"/> Local Plans and Regulations <input type="checkbox"/> Structure and Infrastructure Project <input checked="" type="checkbox"/> Natural Systems Protection <input checked="" type="checkbox"/> Education and Awareness Programs
Applicable Goals/Objectives (refer to list of goals/objectives)	<input checked="" type="checkbox"/> Goal #1 <input checked="" type="checkbox"/> Goal #2 <input checked="" type="checkbox"/> Goal #3 <input checked="" type="checkbox"/> Goal #4 Objective: 1,2,3,4,5
Applies to existing or future development	<input type="checkbox"/> Existing Development <input type="checkbox"/> Future Development <input checked="" type="checkbox"/> Both Existing and Future Development <input type="checkbox"/> Not Applicable
Describe benefits (losses avoided)	<input checked="" type="checkbox"/> Life Safety <input checked="" type="checkbox"/> Damage Reduction <input type="checkbox"/> Other Describe: Comprehensive education will result in enhanced life safety and property protection.
Estimated Cost	<input checked="" type="checkbox"/> < \$10,000; <input type="checkbox"/> \$10,000 to \$100,000; <input type="checkbox"/> > \$100,000 Other Amount: \$
Plan for Implementation	
Responsible Department	
Local Planning Mechanism (check all that apply)	<input type="checkbox"/> CWPP <input type="checkbox"/> Capital Improvement Plan <input type="checkbox"/> Comprehensive Plan <input type="checkbox"/> Building Code <input type="checkbox"/> Ordinance <input type="checkbox"/> Other:
Potential Funding Sources	
Timeline for Completion	<input type="checkbox"/> Short Term (1-5 yrs.) <input type="checkbox"/> Long Term (>5 yrs.) <input type="checkbox"/> Ongoing
Reporting on Progress	
Status/Comment	<input type="checkbox"/> Not Started <input type="checkbox"/> In-progress <input type="checkbox"/> Delayed <input type="checkbox"/> Completed <input type="checkbox"/> No Longer Required Comment:
Completed by: (name, title, phone #)	

Name of Jurisdiction: Pecan Branch Subdivision Mitigation Action #: 3Mitigation Action Title: Construction of a second escape route road

Assessing the Risk	
Hazard(s) addressed: (check all that apply)	<input checked="" type="checkbox"/> Wildfire <input checked="" type="checkbox"/> All Hazards <input checked="" type="checkbox"/> Drought <input checked="" type="checkbox"/> Extreme Heat <input checked="" type="checkbox"/> Flood <input checked="" type="checkbox"/> Lightning <input checked="" type="checkbox"/> Thunderstorm <input checked="" type="checkbox"/> Tornado <input checked="" type="checkbox"/> Wind <input checked="" type="checkbox"/> Winter Weather
Specific problem being Mitigated (describe why action is needed)	Narrow roads without turn around for firefighting equipment. Evacuation may be difficult due to one way in/out. Large amounts of dead vegetation and rough terrain. No homeowner association.
Evaluation of Potential Alternatives	
Alternatives Considered (name of project and reason for not selecting)	31. Plan for construction of a second escape route road to facilitate evacuation of local residents and improve fire department access
	32. Form HOA to work with city and county officials
	33. No Action.
Action/Project Intended for Implementation	
Describe how action will be implemented (main steps involved)	A plan for construction of a second escape route road to facilitate evacuation of local residents and improve fire department access, if the opportunity arises.
Action/Project Type	<input checked="" type="checkbox"/> Local Plans and Regulations <input checked="" type="checkbox"/> Structure and Infrastructure Project <input checked="" type="checkbox"/> Natural Systems Protection <input type="checkbox"/> Education and Awareness Programs
Applicable Goals/Objectives (refer to list of goals/objectives)	<input checked="" type="checkbox"/> Goal #1 <input checked="" type="checkbox"/> Goal #2 <input type="checkbox"/> Goal #3 <input type="checkbox"/> Goal #4 Objective: 4
Applies to existing or future development	<input type="checkbox"/> Existing Development <input type="checkbox"/> Future Development <input checked="" type="checkbox"/> Both Existing and Future Development <input type="checkbox"/> Not Applicable
Describe benefits (losses avoided)	<input checked="" type="checkbox"/> Life Safety <input checked="" type="checkbox"/> Damage Reduction <input type="checkbox"/> Other Describe: Comprehensive education will result in enhanced life safety and property protection.
Estimated Cost	<input type="checkbox"/> < \$10,000; <input checked="" type="checkbox"/> \$10,000 to \$100,000; <input type="checkbox"/> > \$100,000 Other Amount: \$
Plan for Implementation	
Responsible Department	
Local Planning Mechanism (check all that apply)	<input type="checkbox"/> CWPP <input type="checkbox"/> Capital Improvement Plan <input type="checkbox"/> Comprehensive Plan <input type="checkbox"/> Building Code <input type="checkbox"/> Ordinance <input type="checkbox"/> Other:
Potential Funding Sources	
Timeline for Completion	<input type="checkbox"/> Short Term (1-5 yrs.) <input type="checkbox"/> Long Term (>5 yrs.) <input type="checkbox"/> Ongoing
Reporting on Progress	
Status/Comment	<input type="checkbox"/> Not Started <input type="checkbox"/> In-progress <input type="checkbox"/> Delayed <input type="checkbox"/> Completed <input type="checkbox"/> No Longer Required Comment:
Completed by: (name, title, phone #)	

Name of Jurisdiction: Ramm's Road Subdivision Mitigation Action #: 1Mitigation Action Title: Practice Firewise and RSG principles.

Assessing the Risk	
Hazard(s) addressed: (check all that apply)	<input checked="" type="checkbox"/> Wildfire <input type="checkbox"/> All Hazards <input checked="" type="checkbox"/> Drought <input checked="" type="checkbox"/> Extreme Heat <input type="checkbox"/> Flood <input type="checkbox"/> Lightning <input type="checkbox"/> Thunderstorm <input checked="" type="checkbox"/> Tornado <input checked="" type="checkbox"/> Wind <input type="checkbox"/> Winter Weather
Specific problem being Mitigated (describe why action is needed)	One way in and one way out with narrow roads
Evaluation of Potential Alternatives	
Alternatives Considered (name of project and reason for not selecting)	34. Practice Firewise and RSG principles. Educate
	35. Work with City and County officials
	36. No Action.
Action/Project Intended for Implementation	
Describe how action will be implemented (main steps involved)	Encourage local residents to practice Firewise and RSG principles. Educate residents to the benefits of hazardous fuels reduction and encourage residents to work together toward landscape-level hazardous fuels mitigation projects that benefit the entire community. Focus initial hazardous fuels projects on high impact areas near structures and roads that improve access and strategic fire control lines. Practice safe debris burning techniques.
Action/Project Type	<input checked="" type="checkbox"/> Local Plans and Regulations <input type="checkbox"/> Structure and Infrastructure Project <input checked="" type="checkbox"/> Natural Systems Protection <input checked="" type="checkbox"/> Education and Awareness Programs
Applicable Goals/Objectives (refer to list of goals/objectives)	<input checked="" type="checkbox"/> Goal #1 <input checked="" type="checkbox"/> Goal #2 <input checked="" type="checkbox"/> Goal #3 <input checked="" type="checkbox"/> Goal #4 Objective: 1,2,3,4,5
Applies to existing or future development	<input type="checkbox"/> Existing Development <input type="checkbox"/> Future Development <input checked="" type="checkbox"/> Both Existing and Future Development <input type="checkbox"/> Not Applicable
Describe benefits (losses avoided)	<input checked="" type="checkbox"/> Life Safety <input checked="" type="checkbox"/> Damage Reduction <input type="checkbox"/> Other Describe: Comprehensive education will result in enhanced life safety and property protection.
Estimated Cost	<input checked="" type="checkbox"/> < \$10,000; <input type="checkbox"/> \$10,000 to \$100,000; <input type="checkbox"/> > \$100,000 Other Amount: \$
Plan for Implementation	
Responsible Department	
Local Planning Mechanism (check all that apply)	<input type="checkbox"/> CWPP <input type="checkbox"/> Capital Improvement Plan <input type="checkbox"/> Comprehensive Plan <input type="checkbox"/> Building Code <input type="checkbox"/> Ordinance <input type="checkbox"/> Other:
Potential Funding Sources	
Timeline for Completion	<input type="checkbox"/> Short Term (1-5 yrs.) <input type="checkbox"/> Long Term (>5 yrs.) <input type="checkbox"/> Ongoing
Reporting on Progress	
Status/Comment	<input type="checkbox"/> Not Started <input type="checkbox"/> In-progress <input type="checkbox"/> Delayed <input type="checkbox"/> Completed <input type="checkbox"/> No Longer Required Comment:
Completed by: (name, title, phone #)	

Name of Jurisdiction: The Vineyard at Florence Mitigation Action #: 1

Mitigation Action Title: Reestablish the community as a recognized Firewise community

Assessing the Risk	
Hazard(s) addressed: (check all that apply)	<input checked="" type="checkbox"/> Wildfire <input type="checkbox"/> All Hazards <input type="checkbox"/> Drought <input type="checkbox"/> Extreme Heat <input type="checkbox"/> Flood <input type="checkbox"/> Lightning <input type="checkbox"/> Thunderstorm <input type="checkbox"/> Tornado <input type="checkbox"/> Wind <input type="checkbox"/> Winter Weather
Specific problem being Mitigated (describe why action is needed)	Fuel build-up with secondary growth of trees and scrubs. Lack of emergency egress options and fire department access with one primary entrance.
Evaluation of Potential Alternatives	
Alternatives Considered (name of project and reason for not selecting)	37. Encourage residents to adhere to defensible space practices, cultivation of fire resistive ornamental plants, and reduction of structural ignitability in accordance with Firewise guidelines.
	38.
	39. No Action.
Action/Project Intended for Implementation	
Describe how action will be implemented (main steps involved)	Reestablish the community as a recognized Firewise community (Firewise-2008) and promote RSG principles to residents. Encourage residents to adhere to defensible space practices, cultivation of fire resistive ornamental plants, and reduction of structural ignitability in accordance with Firewise guidelines.
Action/Project Type	<input checked="" type="checkbox"/> Local Plans and Regulations <input type="checkbox"/> Structure and Infrastructure Project <input type="checkbox"/> Natural Systems Protection <input checked="" type="checkbox"/> Education and Awareness Programs
Applicable Goals/Objectives (refer to list of goals/objectives)	<input checked="" type="checkbox"/> Goal #1 <input checked="" type="checkbox"/> Goal #2 <input checked="" type="checkbox"/> Goal #3 <input checked="" type="checkbox"/> Goal #4 Objective: 1,2,3,4,5
Applies to existing or future development	<input type="checkbox"/> Existing Development <input type="checkbox"/> Future Development <input checked="" type="checkbox"/> Both Existing and Future Development <input type="checkbox"/> Not Applicable
Describe benefits (losses avoided)	<input checked="" type="checkbox"/> Life Safety <input checked="" type="checkbox"/> Damage Reduction <input type="checkbox"/> Other Describe: Comprehensive education will result in enhanced life safety and property protection.
Estimated Cost	<input type="checkbox"/> < \$10,000; <input checked="" type="checkbox"/> \$10,000 to \$100,000; <input type="checkbox"/> > \$100,000 Other Amount: \$
Plan for Implementation	
Responsible Department	
Local Planning Mechanism (check all that apply)	<input type="checkbox"/> CWPP <input type="checkbox"/> Capital Improvement Plan <input type="checkbox"/> Comprehensive Plan <input type="checkbox"/> Building Code <input type="checkbox"/> Ordinance <input type="checkbox"/> Other:
Potential Funding Sources	
Timeline for Completion	<input type="checkbox"/> Short Term (1-5 yrs.) <input type="checkbox"/> Long Term (>5 yrs.) <input type="checkbox"/> Ongoing
Reporting on Progress	
Status/Comment	<input type="checkbox"/> Not Started <input type="checkbox"/> In-progress <input type="checkbox"/> Delayed <input type="checkbox"/> Completed <input type="checkbox"/> No Longer Required Comment:
Completed by: (name, title, phone #)	

Name of Jurisdiction: The Vineyard at Florence Mitigation Action #: 2

Mitigation Action Title: Identify hazardous fuels reduction projects and plan for a secondary means of egress

Assessing the Risk	
Hazard(s) addressed: (check all that apply)	<input checked="" type="checkbox"/> Wildfire <input checked="" type="checkbox"/> All Hazards <input checked="" type="checkbox"/> Drought <input checked="" type="checkbox"/> Extreme Heat <input checked="" type="checkbox"/> Flood <input checked="" type="checkbox"/> Lightning <input checked="" type="checkbox"/> Thunderstorm <input checked="" type="checkbox"/> Tornado <input checked="" type="checkbox"/> Wind <input checked="" type="checkbox"/> Winter Weather
Specific problem being Mitigated (describe why action is needed)	Fuel build-up with secondary growth of trees and scrubs. Lack of emergency egress options and fire department access with one primary entrance.
Evaluation of Potential Alternatives	
Alternatives Considered (name of project and reason for not selecting)	40. Identify hazardous fuels reduction projects and plan for a secondary means of egress
	41. Work with City and County officials
	42. No Action.
Action/Project Intended for Implementation	
Describe how action will be implemented (main steps involved)	Identify potential hazardous fuels reduction projects and plan for a secondary means of egress in the event of an emergency by establishing a second emergency roadway exiting the subdivision. Ensure that all residential address are marked and street signs are made of non-flammable material.
Action/Project Type	<input checked="" type="checkbox"/> Local Plans and Regulations <input checked="" type="checkbox"/> Structure and Infrastructure Project <input checked="" type="checkbox"/> Natural Systems Protection <input checked="" type="checkbox"/> Education and Awareness Programs
Applicable Goals/Objectives (refer to list of goals/objectives)	<input checked="" type="checkbox"/> Goal #1 <input checked="" type="checkbox"/> Goal #2 <input checked="" type="checkbox"/> Goal #3 <input checked="" type="checkbox"/> Goal #4 Objective: 1,2,3,4,5
Applies to existing or future development	<input type="checkbox"/> Existing Development <input type="checkbox"/> Future Development <input checked="" type="checkbox"/> Both Existing and Future Development <input type="checkbox"/> Not Applicable
Describe benefits (losses avoided)	<input checked="" type="checkbox"/> Life Safety <input checked="" type="checkbox"/> Damage Reduction <input type="checkbox"/> Other Describe: Comprehensive education will result in enhanced life safety and property protection.
Estimated Cost	<input type="checkbox"/> < \$10,000; <input checked="" type="checkbox"/> \$10,000 to \$100,000; <input type="checkbox"/> > \$100,000 Other Amount: \$
Plan for Implementation	
Responsible Department	
Local Planning Mechanism (check all that apply)	<input type="checkbox"/> CWPP <input type="checkbox"/> Capital Improvement Plan <input type="checkbox"/> Comprehensive Plan <input type="checkbox"/> Building Code <input type="checkbox"/> Ordinance <input type="checkbox"/> Other:
Potential Funding Sources	
Timeline for Completion	<input type="checkbox"/> Short Term (1-5 yrs.) <input type="checkbox"/> Long Term (>5 yrs.) <input type="checkbox"/> Ongoing
Reporting on Progress	
Status/Comment	<input type="checkbox"/> Not Started <input type="checkbox"/> In-progress <input type="checkbox"/> Delayed <input type="checkbox"/> Completed <input type="checkbox"/> No Longer Required Comment:
Completed by: (name, title, phone #)	

Name of Jurisdiction: Wades Crossing Mitigation Action #: 1

Mitigation Action Title: New fire station in Andice

Assessing the Risk	
Hazard(s) addressed: (check all that apply)	<input checked="" type="checkbox"/> Wildfire <input checked="" type="checkbox"/> All Hazards <input checked="" type="checkbox"/> Drought <input checked="" type="checkbox"/> Extreme Heat <input checked="" type="checkbox"/> Flood <input checked="" type="checkbox"/> Lightning <input checked="" type="checkbox"/> Thunderstorm <input checked="" type="checkbox"/> Tornado <input checked="" type="checkbox"/> Wind <input checked="" type="checkbox"/> Winter Weather
Specific problem being Mitigated (describe why action is needed)	Water supply, fire department response time, and potential for rapid rates of wildfire spread due to an abundance of grassy fuels. The Andice fire station will reduce response time by half
Evaluation of Potential Alternatives	
Alternatives Considered (name of project and reason for not selecting)	43. Establish a new fire station in Andice to reduce fire department response times.
	44. Work with City and County officials
	45. No Action.
Action/Project Intended for Implementation	
Describe how action will be implemented (main steps involved)	Establish a new fire station in Andice to reduce fire department response times.
Action/Project Type	<input type="checkbox"/> Local Plans and Regulations <input checked="" type="checkbox"/> Structure and Infrastructure Project <input type="checkbox"/> Natural Systems Protection <input type="checkbox"/> Education and Awareness Programs
Applicable Goals/Objectives (refer to list of goals/objectives)	<input checked="" type="checkbox"/> Goal #1 <input checked="" type="checkbox"/> Goal #2 <input type="checkbox"/> Goal #3 <input type="checkbox"/> Goal #4 Objective: 3,4
Applies to existing or future development	<input type="checkbox"/> Existing Development <input checked="" type="checkbox"/> Future Development <input type="checkbox"/> Both Existing and Future Development <input type="checkbox"/> Not Applicable
Describe benefits (losses avoided)	<input checked="" type="checkbox"/> Life Safety <input checked="" type="checkbox"/> Damage Reduction <input type="checkbox"/> Other Describe: Comprehensive education will result in enhanced life safety and property protection.
Estimated Cost	<input type="checkbox"/> < \$10,000; <input checked="" type="checkbox"/> \$10,000 to \$100,000; <input type="checkbox"/> > \$100,000 Other Amount: \$
Plan for Implementation	
Responsible Department	
Local Planning Mechanism (check all that apply)	<input type="checkbox"/> CWPP <input type="checkbox"/> Capital Improvement Plan <input type="checkbox"/> Comprehensive Plan <input type="checkbox"/> Building Code <input type="checkbox"/> Ordinance <input type="checkbox"/> Other:
Potential Funding Sources	
Timeline for Completion	<input type="checkbox"/> Short Term (1-5 yrs.) <input type="checkbox"/> Long Term (>5 yrs.) <input type="checkbox"/> Ongoing
Reporting on Progress	
Status/Comment	<input type="checkbox"/> Not Started <input type="checkbox"/> In-progress <input type="checkbox"/> Delayed <input type="checkbox"/> Completed <input type="checkbox"/> No Longer Required Comment:
Completed by: (name, title, phone #)	

Name of Jurisdiction: Wades Crossing Mitigation Action #: 2Mitigation Action Title: Practice Firewise and RSG practices

Assessing the Risk	
Hazard(s) addressed: (check all that apply)	<input checked="" type="checkbox"/> Wildfire <input checked="" type="checkbox"/> All Hazards <input checked="" type="checkbox"/> Drought <input checked="" type="checkbox"/> Extreme Heat <input type="checkbox"/> Flood <input checked="" type="checkbox"/> Lightning <input type="checkbox"/> Thunderstorm <input checked="" type="checkbox"/> Tornado <input checked="" type="checkbox"/> Wind <input checked="" type="checkbox"/> Winter Weather
Specific problem being Mitigated (describe why action is needed)	Water supply, fire department response time, and potential for rapid rates of wildfire spread due to an abundance of grassy fuels.
Evaluation of Potential Alternatives	
Alternatives Considered (name of project and reason for not selecting)	46. Encourage residents to practice Firewise, RSG practices and fuel treatments
	47. Work with City and County officials
	48. No Action.
Action/Project Intended for Implementation	
Describe how action will be implemented (main steps involved)	Encourage residents to practice Firewise and RSG practices. Educate residents to the benefits of hazardous fuel reduction treatments. Focus initial hazardous fuels treatments in high impact areas along roadsides and the western boundary of the subdivision.
Action/Project Type	<input checked="" type="checkbox"/> Local Plans and Regulations <input type="checkbox"/> Structure and Infrastructure Project <input checked="" type="checkbox"/> Natural Systems Protection <input checked="" type="checkbox"/> Education and Awareness Programs
Applicable Goals/Objectives (refer to list of goals/objectives)	<input checked="" type="checkbox"/> Goal #1 <input checked="" type="checkbox"/> Goal #2 <input checked="" type="checkbox"/> Goal #3 <input checked="" type="checkbox"/> Goal #4 Objective: 1,2,3,4,5
Applies to existing or future development	<input type="checkbox"/> Existing Development <input type="checkbox"/> Future Development <input checked="" type="checkbox"/> Both Existing and Future Development <input type="checkbox"/> Not Applicable
Describe benefits (losses avoided)	<input checked="" type="checkbox"/> Life Safety <input checked="" type="checkbox"/> Damage Reduction <input type="checkbox"/> Other Describe: Comprehensive education will result in enhanced life safety and property protection.
Estimated Cost	<input checked="" type="checkbox"/> < \$10,000; <input type="checkbox"/> \$10,000 to \$100,000; <input type="checkbox"/> > \$100,000 Other Amount: \$
Plan for Implementation	
Responsible Department	
Local Planning Mechanism (check all that apply)	<input type="checkbox"/> CWPP <input type="checkbox"/> Capital Improvement Plan <input type="checkbox"/> Comprehensive Plan <input type="checkbox"/> Building Code <input type="checkbox"/> Ordinance <input type="checkbox"/> Other:
Potential Funding Sources	
Timeline for Completion	<input type="checkbox"/> Short Term (1-5 yrs.) <input type="checkbox"/> Long Term (>5 yrs.) <input type="checkbox"/> Ongoing
Reporting on Progress	
Status/Comment	<input type="checkbox"/> Not Started <input type="checkbox"/> In-progress <input type="checkbox"/> Delayed <input type="checkbox"/> Completed <input type="checkbox"/> No Longer Required Comment:
Completed by: (name, title, phone #)	

Name of Jurisdiction: West Ridge Mitigation Action #: 1Mitigation Action Title: Practice Firewise and RSG practices

Assessing the Risk	
Hazard(s) addressed: (check all that apply)	<input checked="" type="checkbox"/> Wildfire <input checked="" type="checkbox"/> All Hazards <input checked="" type="checkbox"/> Drought <input checked="" type="checkbox"/> Extreme Heat <input type="checkbox"/> Flood <input checked="" type="checkbox"/> Lightning <input type="checkbox"/> Thunderstorm <input checked="" type="checkbox"/> Tornado <input checked="" type="checkbox"/> Wind <input checked="" type="checkbox"/> Winter Weather
Specific problem being Mitigated (describe why action is needed)	Large amounts of firewood stacked near homes and outbuildings. The number of homes under construction and the surrounding WUI area.
Evaluation of Potential Alternatives	
Alternatives Considered (name of project and reason for not selecting)	49. Encourage residents to practice Firewise, RSG practices and fuel treatments
	50. Work with City and County officials
	51. No Action.
Action/Project Intended for Implementation	
Describe how action will be implemented (main steps involved)	Encourage residents to practice Firewise and RSG practices. Educate residents to the benefits of hazardous fuels reduction and encourage residents to work together toward landscape-level hazardous fuels mitigation projects that benefit the entire community. Practice safe debris burning techniques.
Action/Project Type	<input checked="" type="checkbox"/> Local Plans and Regulations <input type="checkbox"/> Structure and Infrastructure Project <input checked="" type="checkbox"/> Natural Systems Protection <input checked="" type="checkbox"/> Education and Awareness Programs
Applicable Goals/Objectives (refer to list of goals/objectives)	<input checked="" type="checkbox"/> Goal #1 <input checked="" type="checkbox"/> Goal #2 <input checked="" type="checkbox"/> Goal #3 <input checked="" type="checkbox"/> Goal #4 Objective: 1,2,3,4,5
Applies to existing or future development	<input type="checkbox"/> Existing Development <input type="checkbox"/> Future Development <input checked="" type="checkbox"/> Both Existing and Future Development <input type="checkbox"/> Not Applicable
Describe benefits (losses avoided)	<input checked="" type="checkbox"/> Life Safety <input checked="" type="checkbox"/> Damage Reduction <input type="checkbox"/> Other Describe: Comprehensive education will result in enhanced life safety and property protection.
Estimated Cost	<input checked="" type="checkbox"/> < \$10,000; <input type="checkbox"/> \$10,000 to \$100,000; <input type="checkbox"/> > \$100,000 Other Amount: \$
Plan for Implementation	
Responsible Department	
Local Planning Mechanism (check all that apply)	<input type="checkbox"/> CWPP <input type="checkbox"/> Capital Improvement Plan <input type="checkbox"/> Comprehensive Plan <input type="checkbox"/> Building Code <input type="checkbox"/> Ordinance <input type="checkbox"/> Other:
Potential Funding Sources	
Timeline for Completion	<input type="checkbox"/> Short Term (1-5 yrs.) <input type="checkbox"/> Long Term (>5 yrs.) <input type="checkbox"/> Ongoing
Reporting on Progress	
Status/Comment	<input type="checkbox"/> Not Started <input type="checkbox"/> In-progress <input type="checkbox"/> Delayed <input type="checkbox"/> Completed <input type="checkbox"/> No Longer Required Comment:
Completed by: (name, title, phone #)	

Name of Jurisdiction: Williamson County Mitigation Action #: 1Mitigation Action Title: Practice Firewise and RSG practices

Assessing the Risk	
Hazard(s) addressed: (check all that apply)	<input checked="" type="checkbox"/> Wildfire <input checked="" type="checkbox"/> All Hazards <input checked="" type="checkbox"/> Drought <input checked="" type="checkbox"/> Extreme Heat <input type="checkbox"/> Flood <input checked="" type="checkbox"/> Lightning <input type="checkbox"/> Thunderstorm <input checked="" type="checkbox"/> Tornado <input checked="" type="checkbox"/> Wind <input checked="" type="checkbox"/> Winter Weather
Specific problem being Mitigated (describe why action is needed)	Wildfire ignition potential from debris in county
Evaluation of Potential Alternatives	
Alternatives Considered (name of project and reason for not selecting)	52. Encourage residents to practice Firewise, RSG practices and fuel treatments 53. Work with County officials 54. No Action.
Action/Project Intended for Implementation	
Describe how action will be implemented (main steps involved)	Encourage residents to practice Firewise and RSG practices. Educate residents to the benefits of hazardous fuels reduction and encourage residents to work together toward landscape-level hazardous fuels mitigation projects that benefit the entire community. Practice safe debris burning techniques.
Action/Project Type	<input checked="" type="checkbox"/> Local Plans and Regulations <input checked="" type="checkbox"/> Structure and Infrastructure Project <input checked="" type="checkbox"/> Natural Systems Protection <input checked="" type="checkbox"/> Education and Awareness Programs
Applicable Goals/Objectives (refer to list of goals/objectives)	<input checked="" type="checkbox"/> Goal #1 <input checked="" type="checkbox"/> Goal #2 <input checked="" type="checkbox"/> Goal #3 <input checked="" type="checkbox"/> Goal #4 Objective: 1,2,3,4,5
Applies to existing or future development	<input type="checkbox"/> Existing Development <input type="checkbox"/> Future Development <input checked="" type="checkbox"/> Both Existing and Future Development <input type="checkbox"/> Not Applicable
Describe benefits (losses avoided)	<input checked="" type="checkbox"/> Life Safety <input checked="" type="checkbox"/> Damage Reduction <input type="checkbox"/> Other Describe: Comprehensive education will result in enhanced life safety and property protection.
Estimated Cost	<input checked="" type="checkbox"/> < \$10,000; <input type="checkbox"/> \$10,000 to \$100,000; <input type="checkbox"/> > \$100,000 Other Amount: \$
Plan for Implementation	
Responsible Department	
Local Planning Mechanism (check all that apply)	<input type="checkbox"/> CWPP <input type="checkbox"/> Capital Improvement Plan <input type="checkbox"/> Comprehensive Plan <input type="checkbox"/> Building Code <input type="checkbox"/> Ordinance <input type="checkbox"/> Other:
Potential Funding Sources	
Timeline for Completion	<input type="checkbox"/> Short Term (1-5 yrs.) <input type="checkbox"/> Long Term (>5 yrs.) <input type="checkbox"/> Ongoing
Reporting on Progress	
Status/Comment	<input type="checkbox"/> Not Started <input type="checkbox"/> In-progress <input type="checkbox"/> Delayed <input type="checkbox"/> Completed <input type="checkbox"/> No Longer Required Comment:
Completed by: (name, title, phone #)	