

CHANDLER ROAD EXTENSION PLANNING & ROW PRESERVATION STUDY

FACT SHEET

Updated January 2021

| | |
|--------------------------------|--|
| County Commissioner: | Commissioner Russ Boles, Precinct 4 |
| Study Limits: | Segment of Chandler Road between SH 95 and FM 619 that includes an extension to US 79. |
| Study Schedule: | Study began in 2019. A final alignment is expected in mid-2021. |
| Issues to be Addressed: | Future safety and mobility and corridor preservation |
| Study Engineers: | Huitt-Zollars, Inc. |

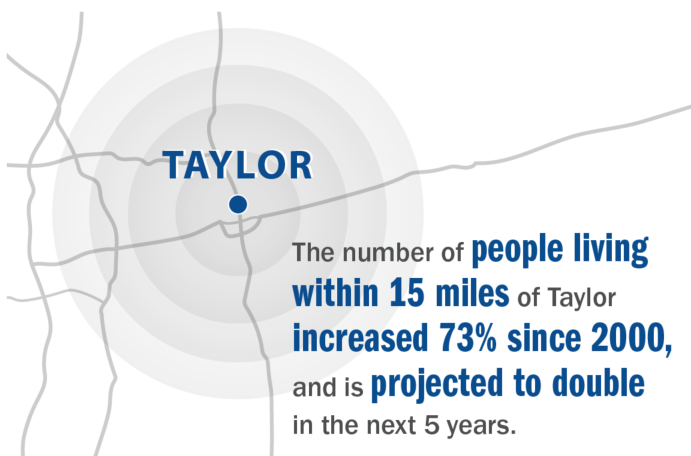
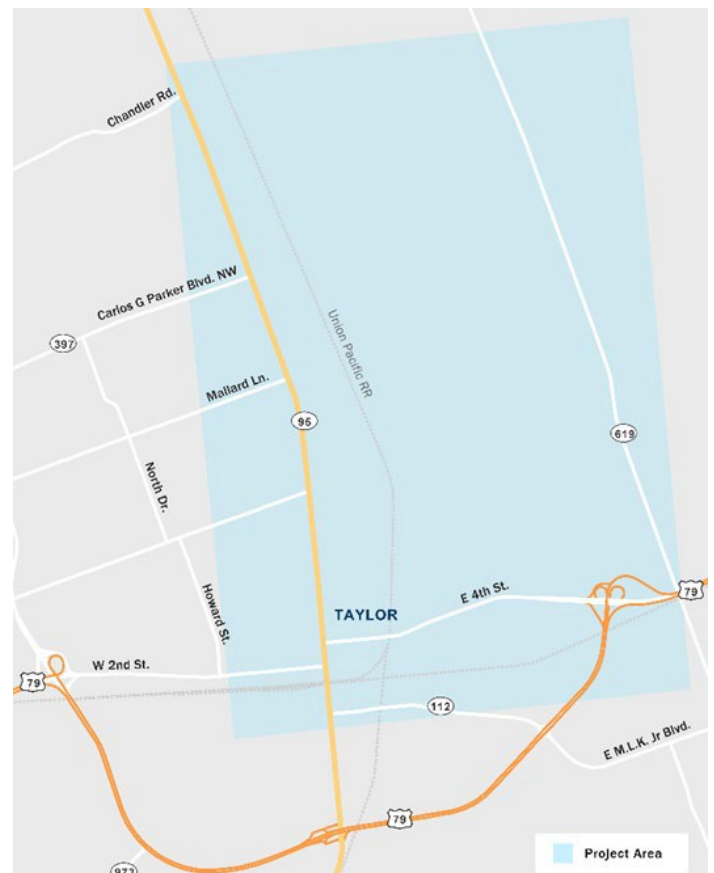
STUDY PURPOSE:

Williamson County is conducting the Chandler Road Extension Planning & ROW Preservation Study to plan for future growth and set the right-of-way (ROW) footprint. The road will be built as growth occurs, improving safety and mobility by creating a connection between SH 95 and US 79. This study is a part of the County's Long-Range Transportation Plan (LRTP), and has been included in the City of Taylor's [Thoroughfare](#) and [Comprehensive](#) Plans, both adopted in 2004.

WHY THE STUDY IS NEEDED:

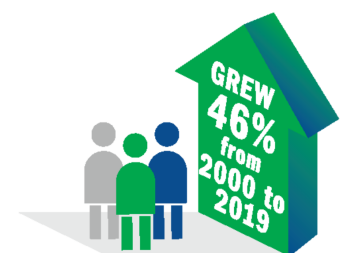
The County has experienced immense growth in recent years and current population projections predict that this growth will continue. The City of Taylor's population has also grown significantly. It is the County's responsibility to plan for transportation needs in order to keep pace with the increased number of residents and vehicles.

STUDY AREA:



Taylor Population Growth

The population in Taylor has increased from 13,575 to 19,859 in less than 20 years



This high level of growth is inevitable and requires extensive planning and development that will ultimately protect the County residents' quality of life. Preserving the corridor for a future road, before development occurs, allows the County to be fiscally responsible by working with willing sellers and developers before the land is developed. This also minimizes impacts to businesses and homes because the corridor is preserved before more structures are built.

Additionally, each phase of the loop has improved mobility and accessibility to and from Taylor and its neighboring cities, increasing regional access and providing an alternative transportation corridor for the community. Chandler Road Phase 3B opened in December of 2012 and extended the road from CR 368/369 to Hwy 95, improving connectivity between eastern and western Williamson County.

The extension enabled drivers to get from anywhere in Taylor to I-35 in less than 30 minutes, providing connectivity to other nearby cities. This new phase will also provide better access to the City of Taylor by improving mobility. It will allow people to more easily visit places like the Williamson County Expo Center, attend festivals, shop on main street, and enjoy other activities that Taylor has to offer. This final phase will extend Chandler Road east to FM 619 and south to US 79, completing connectivity around the City of Taylor and providing quicker access to schools, businesses, and other major roadways.

THE STUDY AND PLANNING PROCESS:

The study that is underway to determine a route examines multiple constraints such as environmental and historical factors, home and business displacements, and drainage and waterways. The study will also include setting a final ROW footprint.

Once the final ROW footprint is set, the County will work with willing sellers and developers to acquire land. Preserving the corridor for a future road before development occurs allows the County to be fiscally responsible by working with willing sellers before property values make it cost prohibitive for improvements. Preserving ROW now also minimizes impacts to businesses and homes because the corridor is preserved before more structures are built

WHAT HAPPENS NEXT:

Eventually, the County will extend Chandler Road by constructing a controlled-access roadway to connect SH 95 and US 79, completing the northeast portion of the Taylor Loop. The first phase of the road will most likely be a two to three lane road: one lane in each direction with a center turn lane. As growth occurs and funding becomes available, the second frontage would be built, then finally the main lanes. Building the ultimate Chandler Rd Extension will most likely take several decades.

MORE INFORMATION

For more information about this study, or to sign up for email updates, please contact our public involvement team by calling 512-943-1195 or emailing roads@wilco.org. Study materials and updates will be posted on the Chandler Road Extension Planning & ROW Preservation Study page of the website: www.wilco.org/ChandlerExt.