

# Williamson County 2019 Proposed Bond Program

City of Georgetown Project Submittals  
May 30, 2019



# Today's Presentation Purpose

- Provide an overview of the City of Georgetown's candidate projects for the 2019 Williamson County Bond program



# Wilco 2019 Bond Program

## Proposed Road Projects

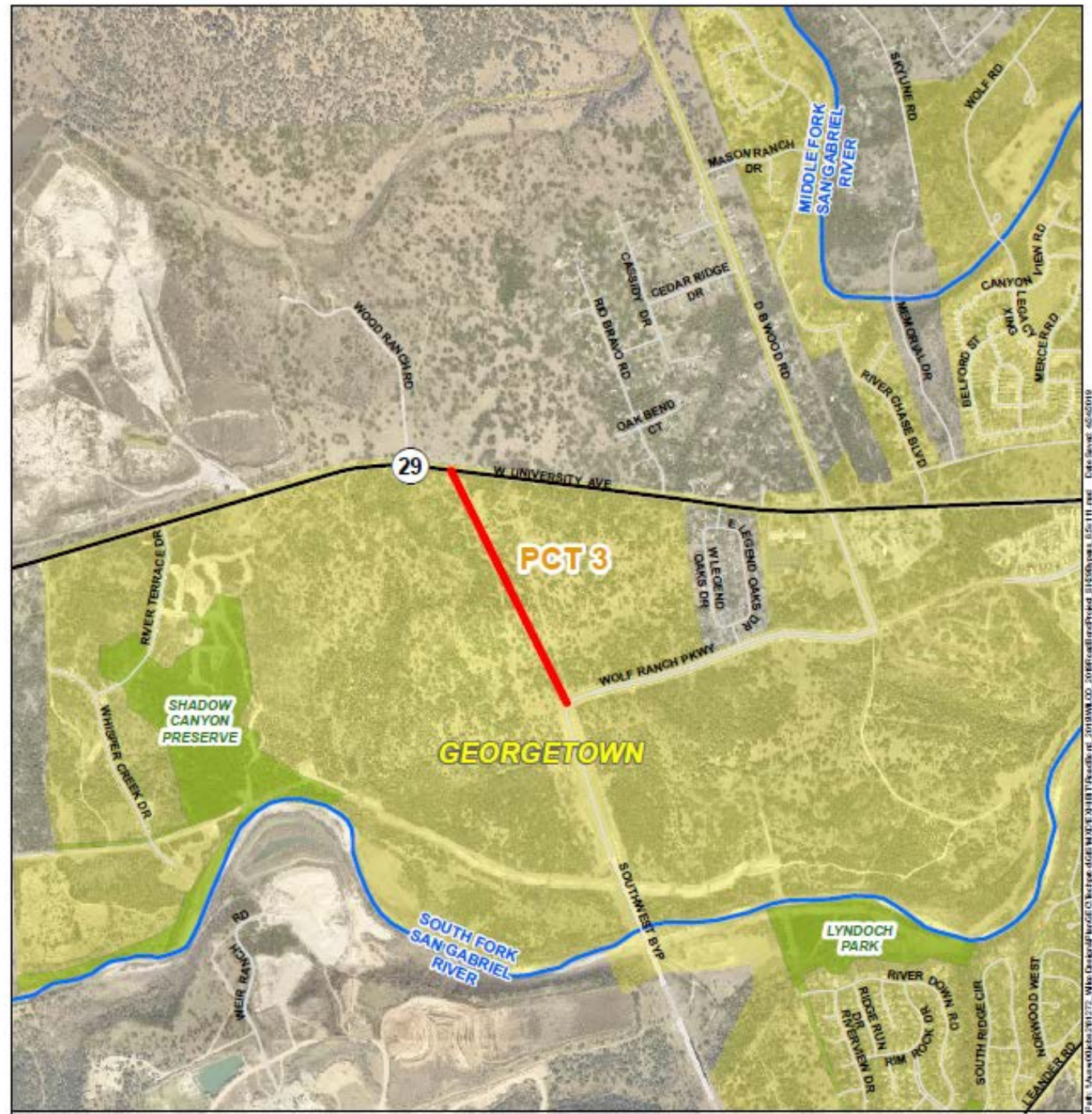
1. Southwest By-Pass Extension to SH 29
2. Westinghouse from FM 1460 to SH 130
3. SE Inner Loop Extension from Sam Houston east to SH 29

# Wilco 2019 Bond Program

Southwest By-Pass to SH-29 = \$5,473,000

- Extension of the Southwest By-Pass north to SH-29
- Provide full at-grade intersection at SH-29
- Project is approximately .60 miles

## Southwest By-Pass Extension



# Wilco 2019 Bond Program

## Southwest By-Pass to SH-29

- Completes Southwest By-Pass to SH-29 and provides a connection to SE Inner Loop.
- Provides drivers an alternate route to IH-35 from SH-29
- A critical link in creating a true SH-29 By-Pass for east to west and west to east traffic movements that are currently using SH-29 through town
- Will help to reduce current and future traffic issues at SH-29 and IH-35 intersection.

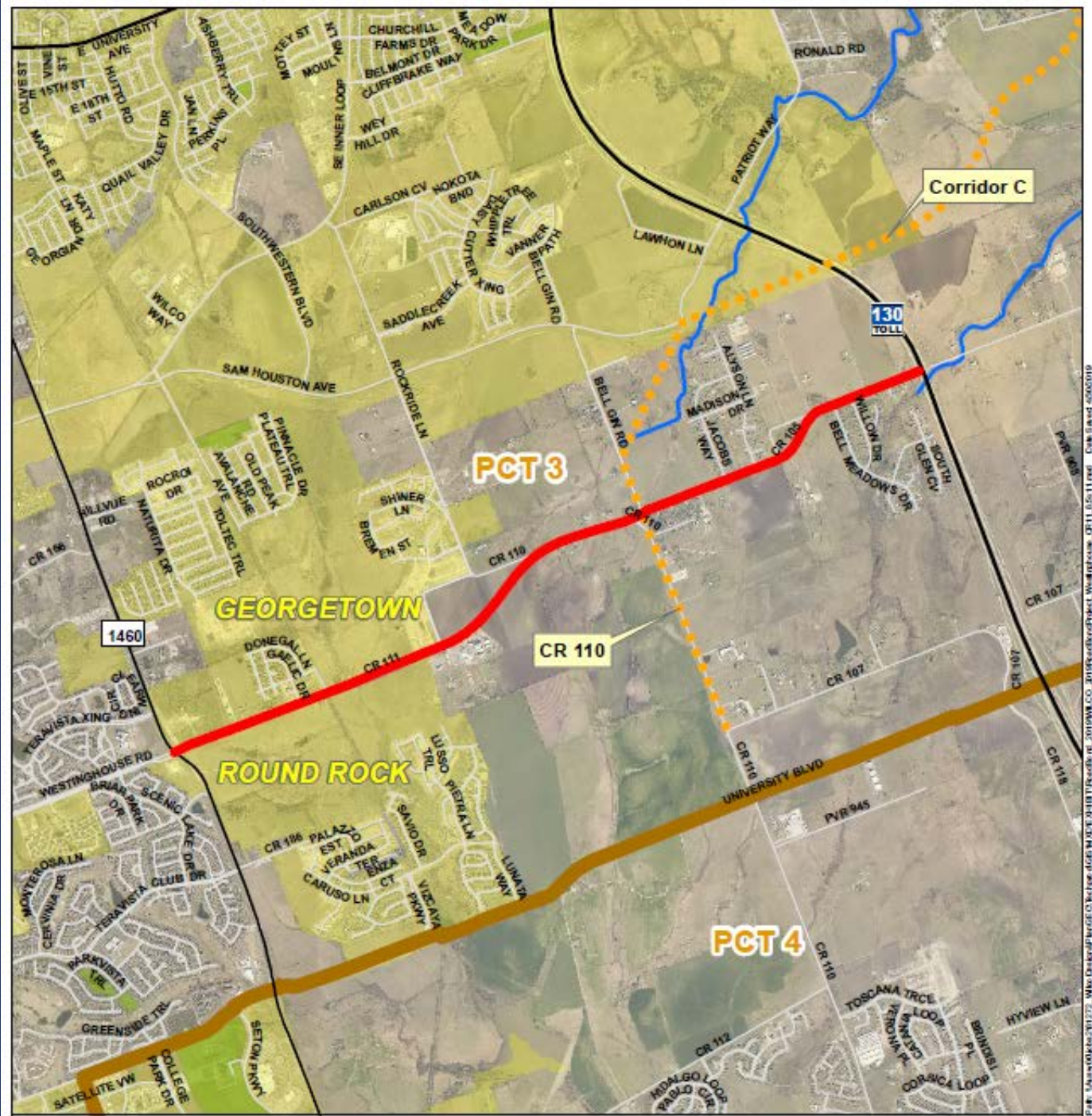
# Wilco 2019 Bond Program

Westinghouse Road = \$20,196,000

- From FM 1460 to SH-130
  - FM 1460 to Rock Ride
  - Rock Ride to SH-130



Westinghouse from FM  
1460 to SH 130





# Wilco 2019 Bond Program

## Westinghouse from FM 1460 to SH 130

- According to City of Georgetown's development and permit data this is one of the fastest growing areas within the City
- Improvements are needed for current and future growth
- 2015 traffic counts showed 5,600 vehicles per day, a 2019 traffic study showed 9,200 vehicles per day
- Two GISD school campuses are planned for this area
- Provides for a much needed east-west corridor

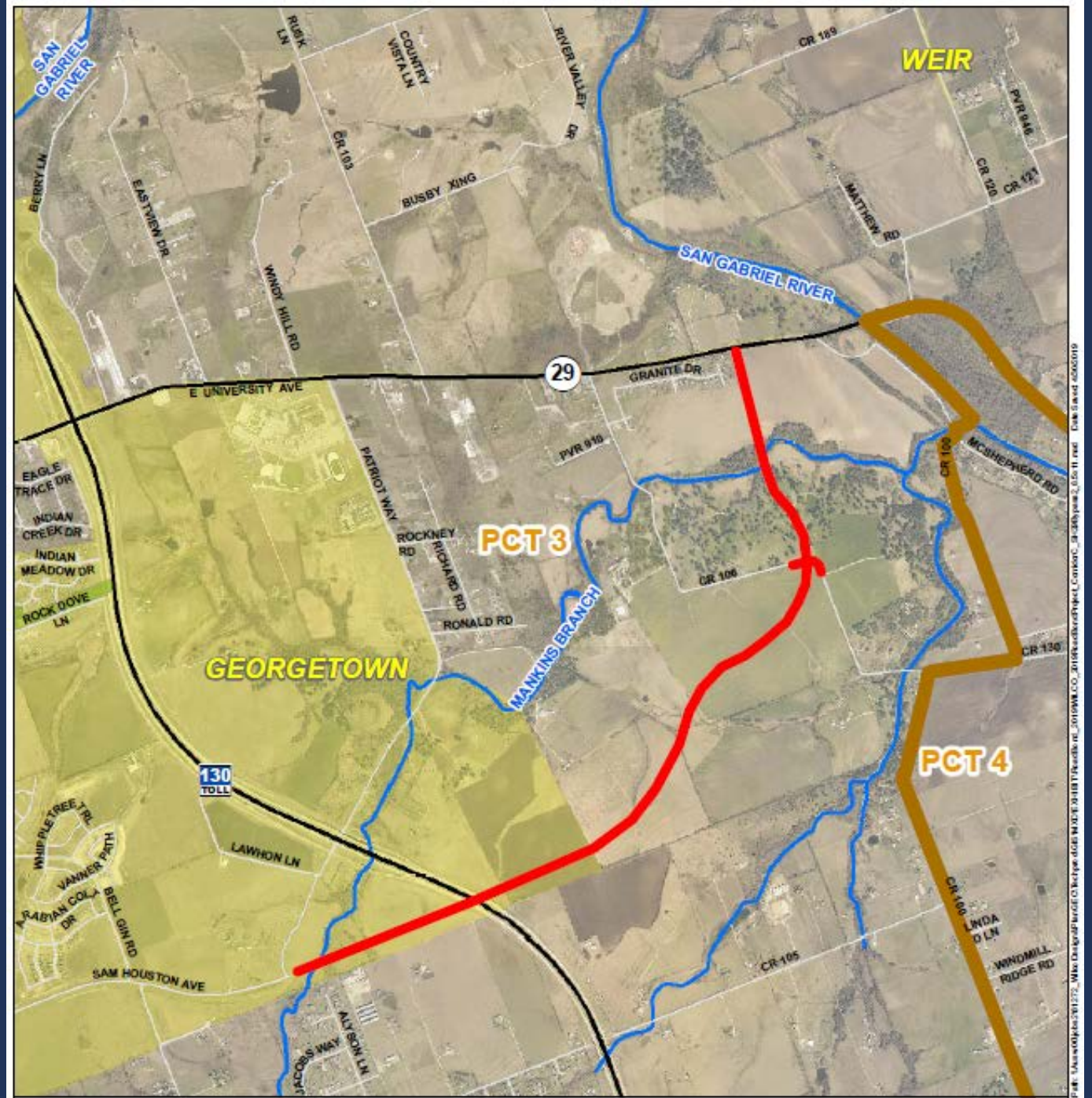
# Wilco 2019 Bond Program

SE Inner Loop Extension (SW By-Pass) = \$22,537,000

- From Sam Houston east to SH-29



# Southeast Inner Loop Extension



# Wilco 2019 Bond Program

## SE Inner Loop Extension (SW By-Pass)

- Needed extension of SE Inner Loop
- Would create a full by-pass for SH-29
- Provides an alternate east-west route
- Would help with current truck traffic on SH-29
- Area of high growth
- Regional Arterial

# Wilco 2019 Bond Program

## Regional Trail Project



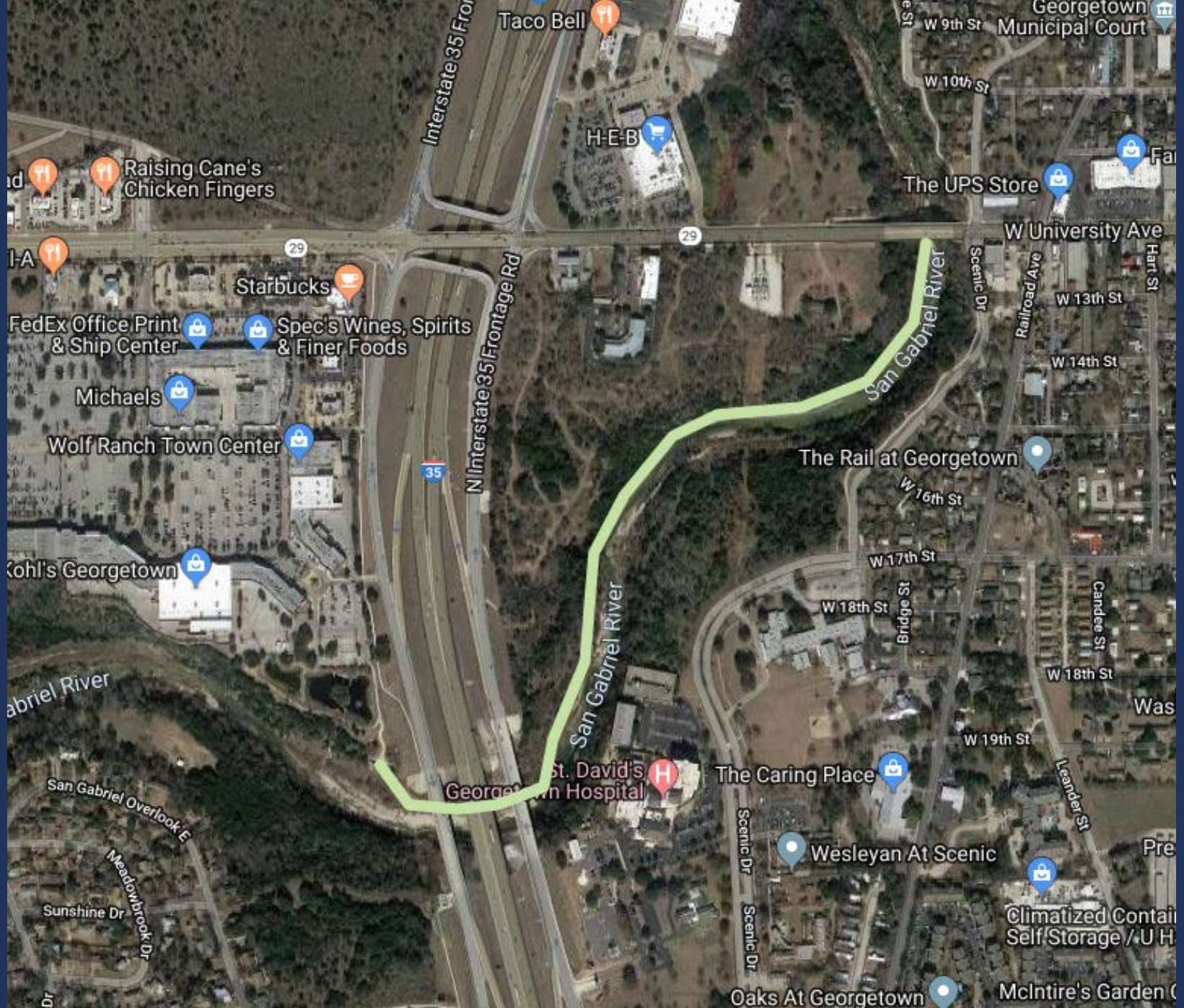


# Wilco 2019 Bond Program

## South San Gabriel River Trail

- From W. University Avenue just west of IH-35
- 10' wide concrete multi-use trail
- Approximately 4,000 linear feet
- Total cost \$1,275,000

# South San Gabriel River Trail



# Today's Presentation Purpose

## South San Gabriel River Trail

- Provides a vital connection to County's Regional Trail System
- Connects City's hike / Bike trail to Wolf Ranch Regional Trail
- Trail will eventually connect with the City of Leander Trail systems on to River Ranch

# Summary of Projects

1. SE Inner Loop Extension (SW By-Pass)
2. Southwest By-Pass Extension
3. Westinghouse from FM 1460 to SH-130
4. SE Inner Loop Extension (SW By-Pass)
5. South San Gabriel River Trail

Questions?

Thank you!

