

CR 258 EXTENSION

FACT SHEET

January 2023

County Commissioner:	Commissioner Cynthia Long, Precinct 2
Project Limits:	US 183 to Sunset Ridge Drive
Project Schedule:	Construction began fall 2022 with completion anticipated early 2024
Issues to Be Addressed:	Lack of capacity and connectivity; safety and mobility
Project Engineer:	American Structurepoint
Project Contractor:	Joe Bland Construction



PROJECT OVERVIEW

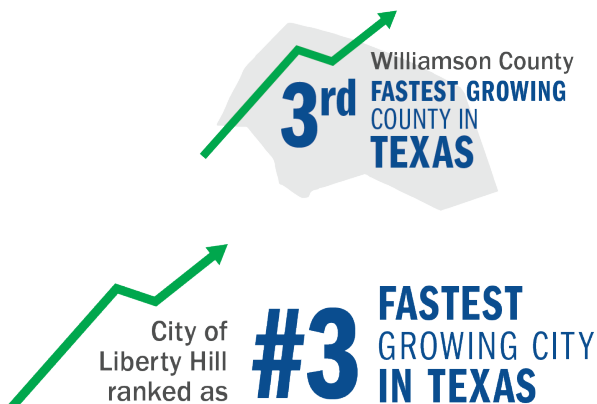
Williamson County is planning to extend CR 258 from US 183 to Sunset Ridge Drive to improve safety and mobility. The extension will be constructed as a two-lane roadway with shoulders on either side and will include a connection to Questa Trail.

The Texas Department of Transportation is constructing a concurrent project that will add turn lanes along US 183 onto CR 258.

PROJECT PURPOSE

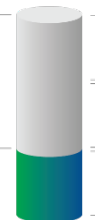
Williamson County and the Liberty Hill area are experiencing tremendous growth and current population projections predict that this growth will continue. It is the County's responsibility to plan for transportation needs in order to keep pace with the increased number of residents and vehicles.

This high level of growth requires extensive planning and development that will improve connectivity and mobility for residents, ultimately protecting their quality of life. Williamson County is providing new travel lanes with the CR 258 extension to keep residents safe, improve connectivity, and accommodate expected future traffic volumes. The Questa Trail extension will facilitate safe neighborhood access and connectivity for the Rancho Santa Fe residents and emergency services.



2045 POPULATION ESTIMATE
1,377,000

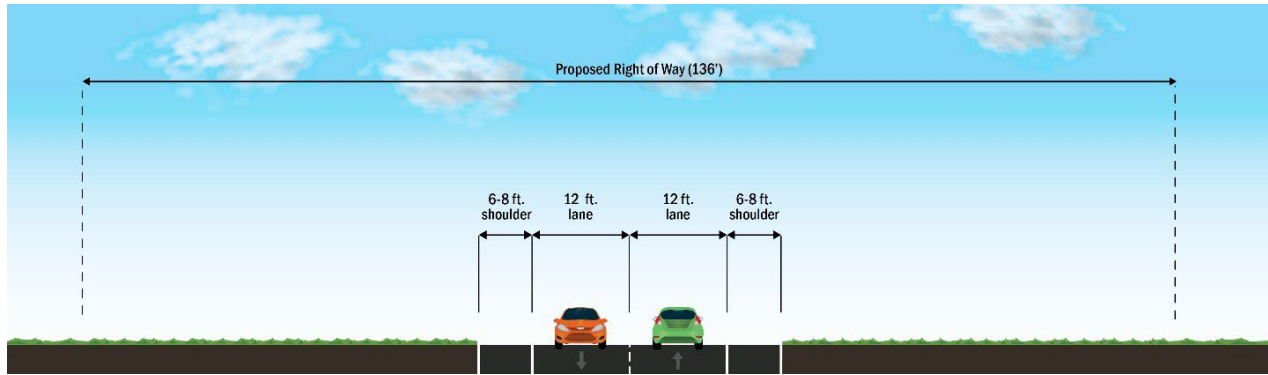
CURRENT
POPULATION



3X Population Growth

The population of Williamson County is estimated to be 1,377,000 by 2045 – nearly three times what it is now

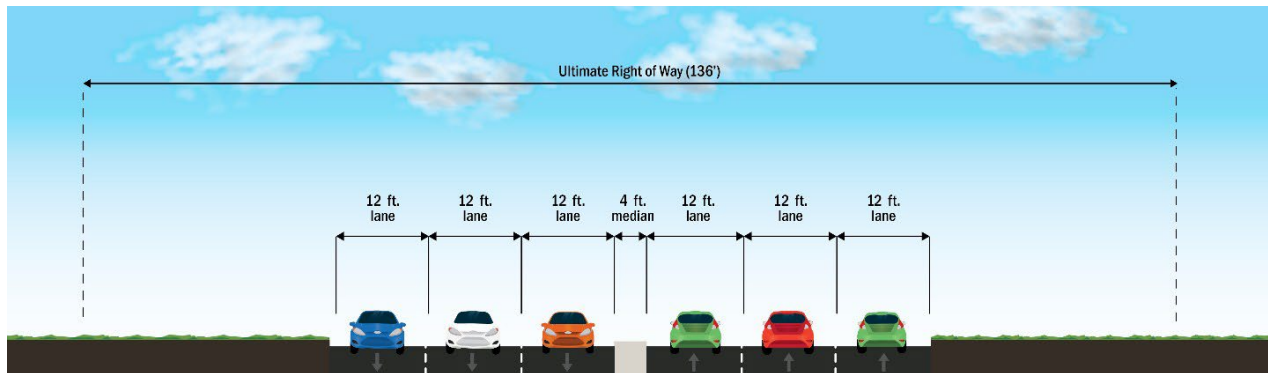
ROADWAY CONFIGURATION AFTER CONSTRUCTION



PLANNING FOR THE FUTURE

The County's plan for a two-lane roadway is expected to address existing travel needs; however, growth projections and traffic models indicate that additional capacity will be needed in the future. The 136-foot right-of-way (ROW) footprint identified for the two-lane extension will accommodate the ultimate buildout of CR 258 as a six-lane roadway, as identified in the Williamson County Long Range Transportation Plan (LRTP). This will allow the County to move forward with future phases when demand necessitates and when funding is available, without additional ROW impacts to property owners.

ULTIMATE ROADWAY CONFIGURATION



STATUS AND NEXT STEPS

The project was designed by American Structurepoint. Joe Bland Construction is the contractor selected to construct the extension. Construction began in fall 2022 and is expected to be complete in early 2024.

MORE INFORMATION

For more information about this project, please visit

<https://www.wilco.org/Departments/Infrastructure/Projects/Precinct-2/CR-258-Extension-US-183-To-Sunset-Ridge-Drive>

Questions or comments may be directed by email to roads@wilco.org with "CR 258" in the subject line, or by phone to (512) 943-1195.