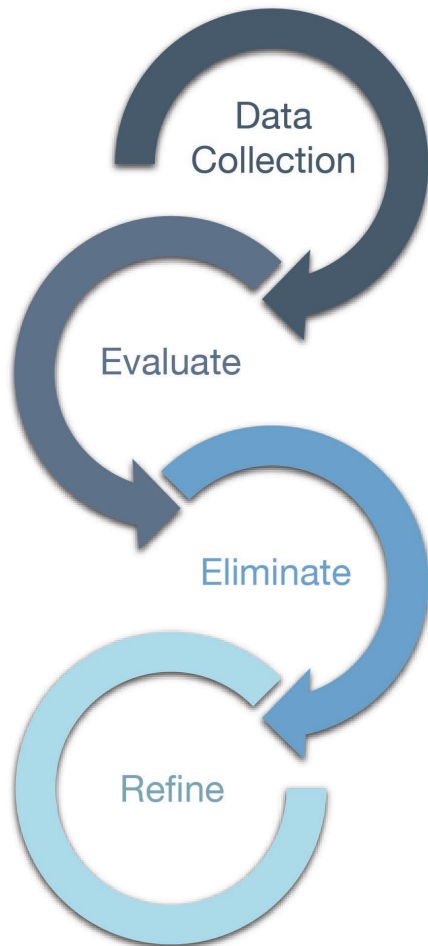


The Southeast Loop Study considers connections for east/west travel between SH 130 and FM 3349 and north/south travel to US 79 in the Hutto and Taylor areas to:

- Address the tremendous amount of growth and current needs
- Provide reliable transportation options
- Increase connectivity, mobility, and safety



# ROUTE REFINEMENT PROCESS



Many factors were considered in corridor studies to help the study team evaluate different alignment concepts. Through this process, route concepts were eliminated, and the remaining route concept was refined.



WATER  
RESOURCES &  
DRAINAGE



SOCIAL &  
COMMUNITY  
IMPACTS



PUBLIC  
INPUT



ARCHEOLOGICAL  
& HISTORICAL  
RESOURCES



LAND USE &  
PARKLAND



ROW IMPACTS  
& COST ANALYSIS



THREATENED &  
ENDANGERED  
SPECIES



VEGETATION &  
WILDLIFE



ENGINEERING  
ANALYSIS



HAZARDOUS  
MATERIALS

## 2016

- Williamson County Long-Range Transportation Plan (LRTP) updated with Corridor Plan

## 2017

- County initiated the A1 and E1 corridor studies in eastern Williamson County
- Three public meetings were held with 646 attendees to collect input on the study and gather route suggestions from the public
- A1 and E1 corridors were combined and named the Southeast Corridor

### Public Comments

“People need plenty of width for sharing roadway and lights to permit safe cross.”

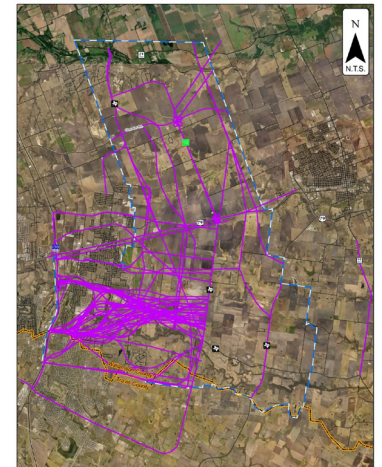
“Do improve access but protect the development of new communities.”

“Preserve the farm land. Respect family farms that have been in agricultural operation for many years!.”

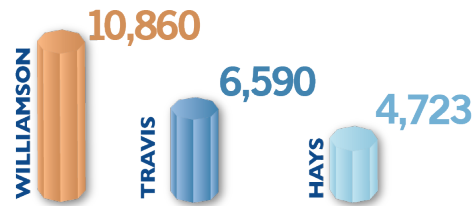
“Design should not necessarily be about speed but promoting quality of life and community.”

“This area is filled with rural homes. A road will increase light pollution and noise pollution. Decreased air quality. No more bonfires with quiet. No more stars “

### Publicly Drawn Routes

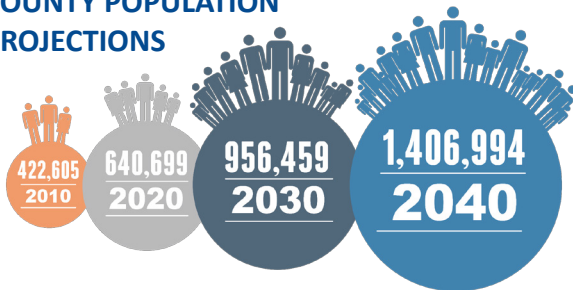


## Williamson County



The County has 10,860 lots currently in development. That's 4,000 more than Travis County and 6,000 more than Hays County.

## COUNTY POPULATION PROJECTIONS



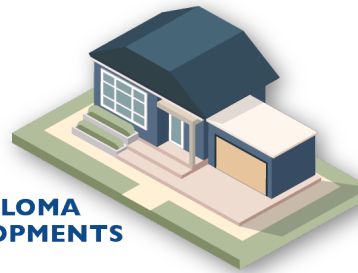
## Along CR 110



More Growth  
Ahead

**3,697**

TOTAL LOTS  
PLANNED IN PALOMA  
& SIENA DEVELOPMENTS



## City of Hutto



**2,446**

RESIDENTIAL  
HOUSING UNITS  
DEVELOPED  
SINCE 2012



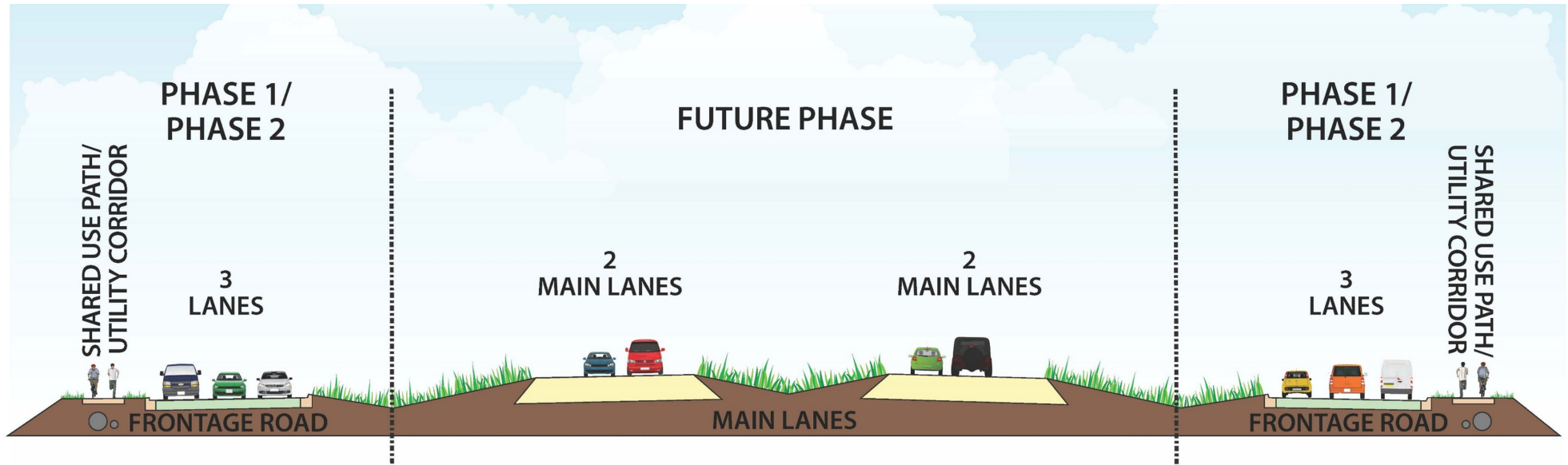


# ENVIRONMENTAL CONSTRAINTS AND PLANNED DEVELOPMENTS

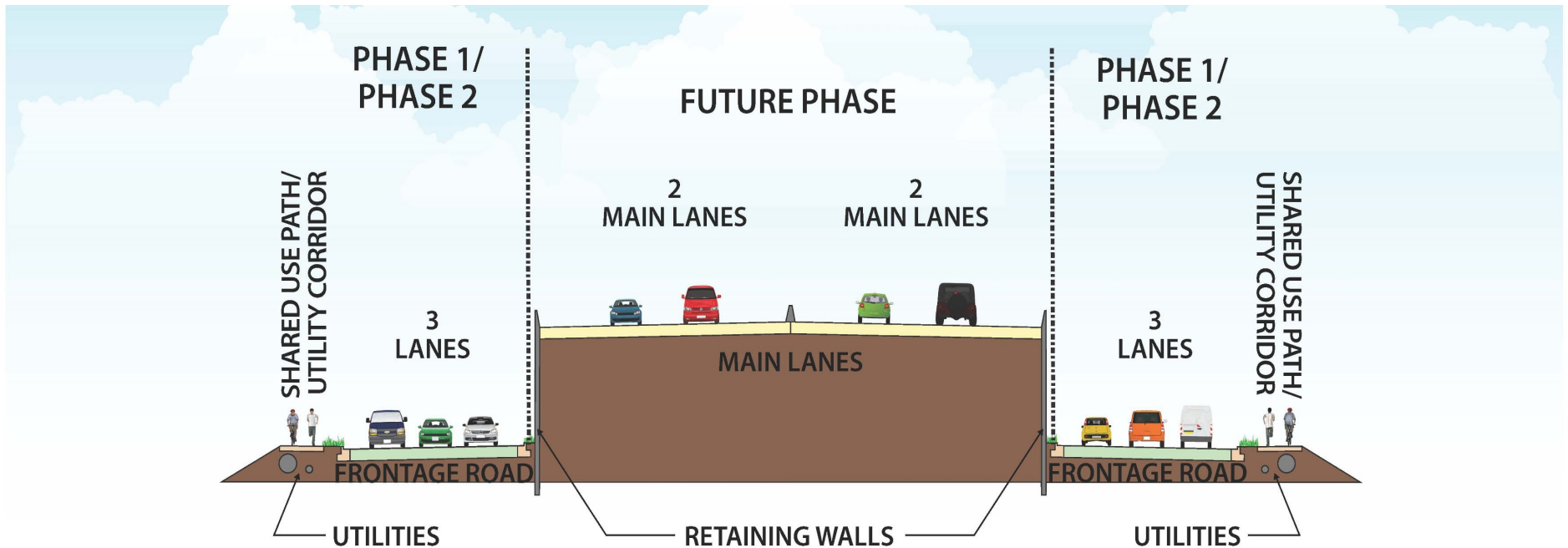




## Access Controlled Facility Conceptual Drawing Approximately 350 Feet



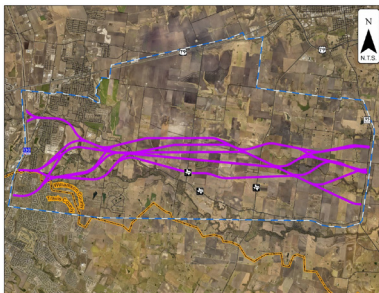
## Section Near SH 130 Conceptual Drawing Approximately 240 Feet



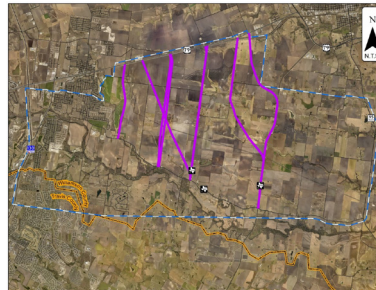
## 2018

- The technical team conducted analyses and environmental studies to identify initial route concepts for A1 and E1
- The east/west route was extended to SH 95, creating route concept A2, and routes were eliminated and refined to identify reasonable route concepts

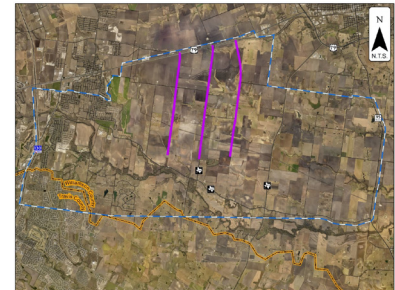
### Initial Route Concepts



### Refined Initial Route Concepts



### Reasonable Route Concepts





## 2019

- Technical team gathered additional data and conducted further engineering analysis
- Under Commissioner Boles' leadership, the study area was rightsized to become the **Southeast Loop Study**
- The non-tolled Southeast Loop will be a County road that includes an overpass at US 79 and the railroad tracks
- A2 route from FM 3349 to SH 95 was removed from the study

### New Housing Starts Skyrocketed

New, privately-owned houses on which construction has started.



### Calls for Police, Fire, EMS Increased

Includes 911 calls, administrative calls and officer-initiated activities (traffic stops, citizen assists, observed crimes).

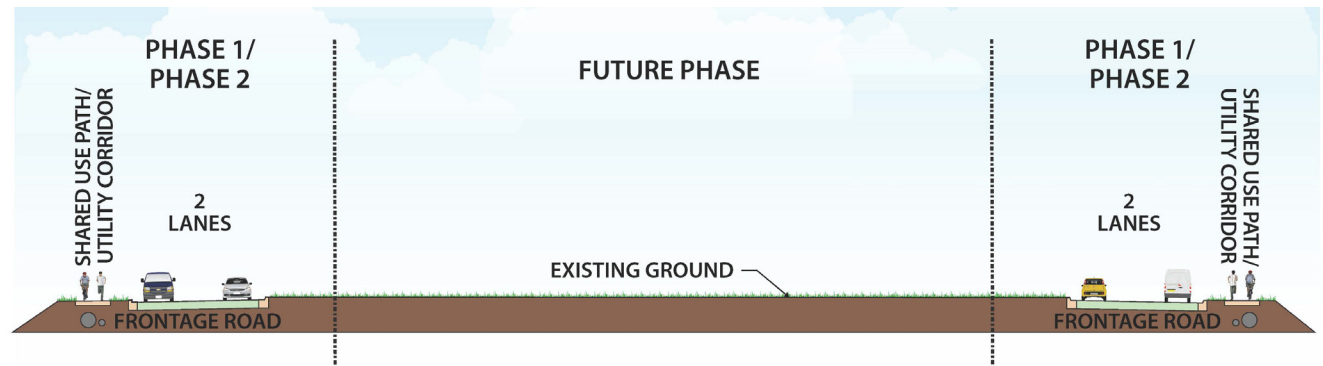


## Phasing Conceptual Drawings

Access controlled facilities are often built in phases, usually starting with the frontage roads as funding is available. The graphic below is an illustration of phasing and more details will be identified in construction plans.

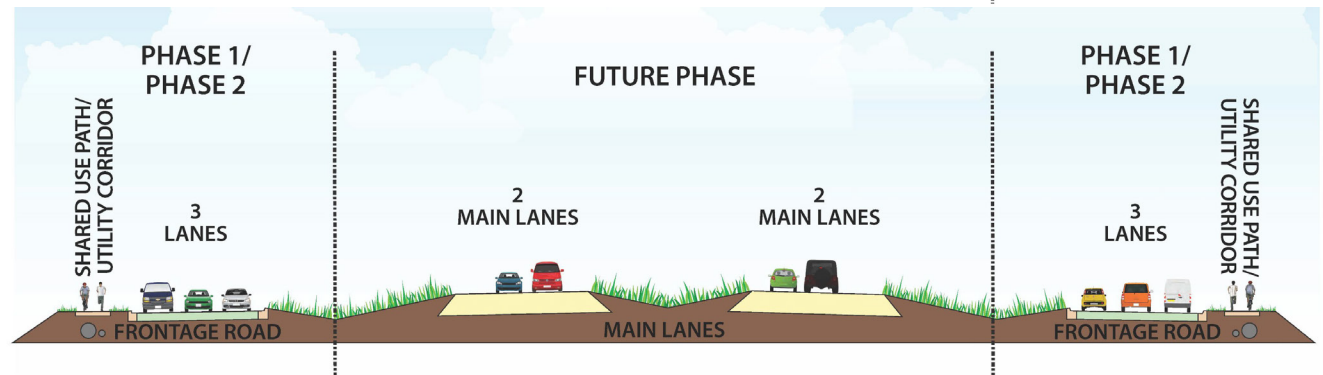
### Initial Phases - Frontage Roads

Approximately 350 Feet



### Future Phases - Mainlanes

Approximately 350 Feet



## NEXT STEPS

- Collect and evaluate public input on the Southeast Loop route concept
- Conduct environmental field investigations and additional analysis
- Continue property owner coordination
- Refine and finalize the route concept

## Share Your Input

- The comment period for comments to be included in the official meeting report is open through **July 9, 2019**
- Submit a comment card at the public open house
- Send via email or mail
  - Email: [roads@wilco.org](mailto:roads@wilco.org) with "Southeast Loop" in the subject line
  - Mail: Williamson County Public Information  
710 S. Main Street, Suite 101  
Georgetown, TX 78626