

## FREQUENTLY ASKED QUESTIONS

### 1. What is the CR 258 Extension Project?

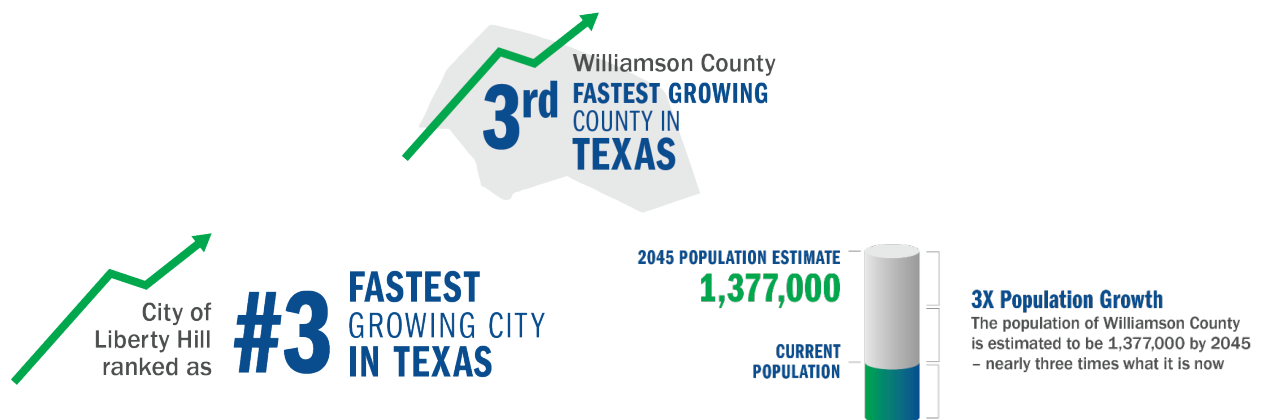
Williamson County is planning to extend CR 258 from US 183 to Sunset Ridge Drive to improve safety and mobility. The extension will be constructed as a two-lane roadway with shoulders and will include a connection to Questa Trail.

The Texas Department of Transportation is constructing a concurrent project that will add turn lanes along US 183 onto the new extension of CR 258.

### 2. Why is the CR 258 project needed?

Williamson County and the Liberty Hill area are experiencing tremendous growth, and current population projections predict that this growth will continue. It is the County's responsibility to plan for transportation needs in order to keep pace with the increased number of residents and vehicles.

This high level of growth requires extensive planning for needed construction that will improve safety, connectivity and mobility for residents, ultimately protecting their quality of life. Williamson County is providing new travel lanes with the CR 258 extension to keep residents safe, improve connectivity, and accommodate expected future traffic volumes. The Questa Trail extension will facilitate safe neighborhood access and connectivity for the Rancho Santa Fe residents and emergency services.



Sources: US Census Bureau, CAMPO 2045 Regional Transportation Plan, Texas Demographic Center

### 3. What is the Williamson County the Long-Range Transportation Plan (LRTP)?

The Williamson County Commissioners Court adopted the LRTP in October 2009. The plan is regularly updated based on current needs, population projections, and anticipated future mobility and safety needs in Williamson County. The planning process to develop the LRTP involves working with the public, cities, neighboring counties, and transportation and planning agencies to gather input and coordinate connectivity and mobility.

The most recent amendments to the LRTP outline a network of roadways that will improve safety and mobility across the county. These amendments include a map of potential controlled access facilities and potential arterial roadways. These potential roadways are conceptual only to show general locations and connections needed. To learn more about the LRTP, click [here](#).

#### **4. Does the County plan to expand CR 258 in the future?**

The current plan for the roadway allows for future expansion as the need arises and as funding becomes available to construct additional lanes. The 136-foot right-of-way (ROW) footprint identified for the two-lane extension will accommodate the ultimate six-lane roadway, which will allow the County to move forward with future phases when demand necessitates and when funding is available, without additional ROW impacts to property owners.

#### **5. Why are improvements to Sunset Ridge Drive needed, and what is proposed?**

Existing underground utilities in the area require CR 258 to be built at a slightly higher elevation than the existing roadway. Sunset Ridge Drive must also be raised to connect to the raised roadway and to provide a safe sight distance for vehicles approaching the intersection. In addition to raising the roadway, Sunset Ridge Drive will be widened near the CR 258 intersection to accommodate two-way traffic.

#### **6. Why is Questa Trail being extended?**

When the Rancho Santa Fe subdivision was platted, this extension to the future CR 258 was planned to facilitate safe neighborhood access, accommodate expected future traffic volumes, and provide greater connectivity for residents and emergency services. As part of the development approval process, Williamson County requires developers to plan for multiple access points for each subdivision. The Questa Trail extension was included in original plats to meet this requirement for secondary access, and this connection for Ranch Santa Fe residents will be constructed as part of this project.

#### **7. When will construction begin?**

Design is expected to be finalized in spring 2022. ROW appraisals and acquisitions are underway, as well as utility coordination, and must be completed prior to beginning construction. Construction is expected to begin in summer 2022 and be complete in summer 2023.

#### **8. How does the County plan to control traffic at intersections?**

This project will include a stop sign along the proposed CR 258 at the US 183 intersection. One-way stop signs are also proposed for the Questa Trail, Sunset Ridge Drive and CR 258 intersections.

Signals are not proposed for these intersections, as stop signs are expected to safely control current and traffic volumes at these intersections. Additionally, new traffic signals can only be installed when warranted through a [Traffic Signal Warrant Study](#), which examines traffic volumes, stop conditions, and other factors that influence intersection safety. These studies require evaluation of data for the intersection under review. A Signal Warrant Study can only be conducted once a roadway is constructed and open to traffic.

A map showing expected intersection control measures after project completion is available on the project webpage.

## **9. What drainage improvements are included as part of this project?**

The County is required to ensure that any construction project or roadway improvement causes no adverse impacts to the existing drainage patterns. The County will include drainage infrastructure in project designs to maintain the existing flow of water.

The County has included several culverts under the proposed CR 258, Sunset Ridge Drive, and the extension of Questa Trail. These culverts will convey storm water under the roadway into culverts that will drain into Dyeus Branch Creek. The drainage study and report for these proposed improvements confirmed that proposed drainage features meet the ‘no adverse impact requirement,’ or no increase to storm water flow due to the new roadway.

## **10. What will happen to the existing connection of CR 258 and US 183 to the south?**

The existing segment of CR 258 that intersects with US 183 to the south will remain open and be renamed as a different roadway in the future.

## **11. How will residents and business owners along the alignment be impacted? How much ROW will be needed and how will property owners be compensated?**

As the project moves forward, the County’s public involvement team will meet with impacted property owners to discuss the project and property impacts in more detail.

Currently, the County does not anticipate any needed ROW from private residents or any additional ROW for future phases of this project (See question #4). However, some properties may require temporary construction easements or long-term access easements for construction and maintenance of the proposed improvements.

The formal ROW and easement acquisition process involves independent appraisals and a negotiation process between the property owner and the County. Individual parcels are reviewed by an independent, licensed appraiser to determine the fair market value for acquisition of required ROW or easement. Impacts on the remaining property will be considered when determining the ROW or easement value.

## **12. How was this project funded?**

The first phase of the proposed CR 258 Extension is funded through the voter-approved 2013 Williamson County Road Bond. Funding for future construction can come from many sources; the most common are road bonds and partnerships between federal, state, county, and city governments.

## **13. How can I get more information on the CR 258 Extension Project?**

If you have questions about the project or would like to provide information about your property, please contact the County:

- Phone: 512-943-1195 (leave a message for a call back within 48 hours)
- Email: [roads@wilco.org](mailto:roads@wilco.org) (include “CR 258 Extension” in the subject line)