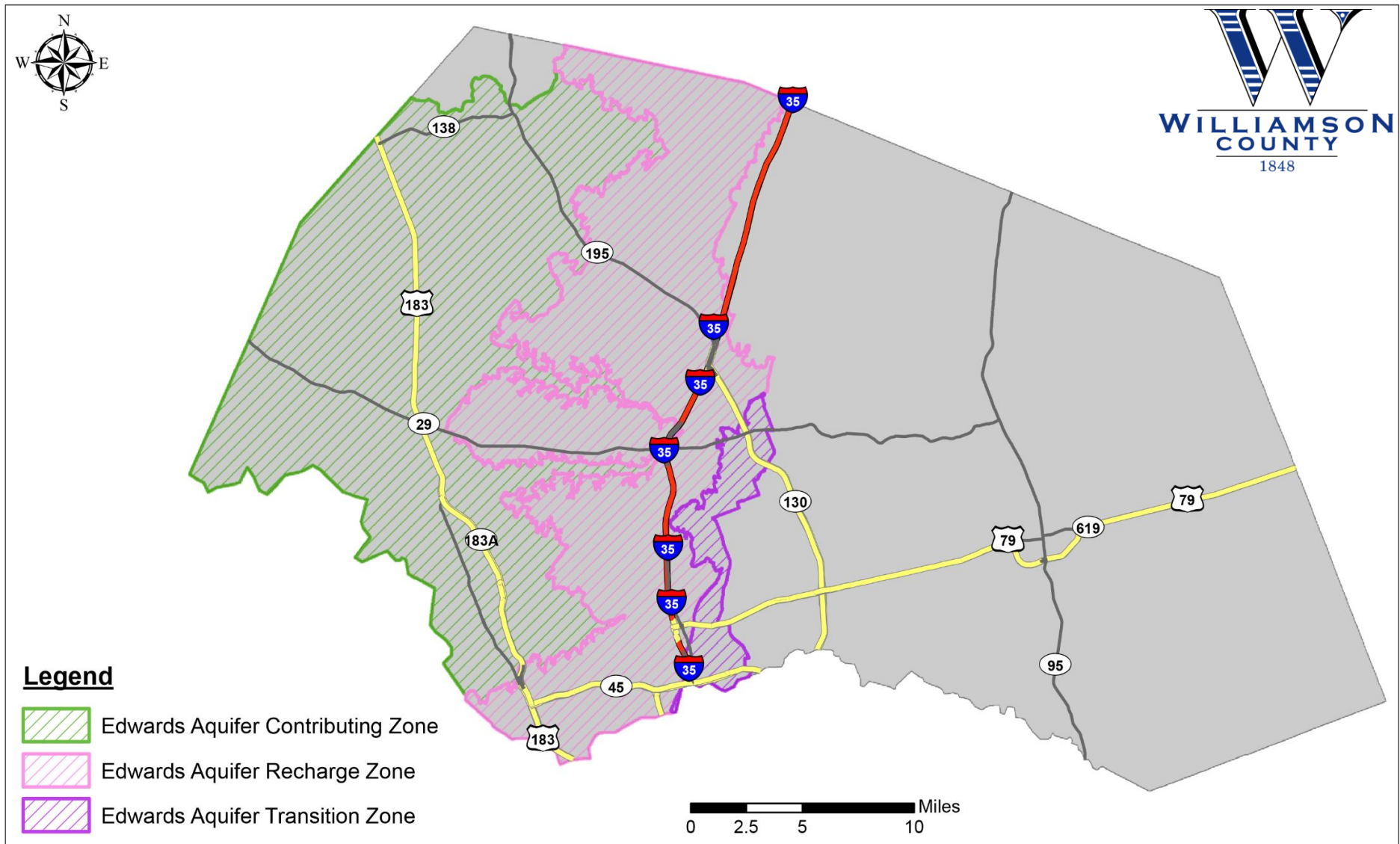


Williamson County Edwards Aquifer Regulatory Zones (**Requires Further Action**)



Visit <https://www.tceq.texas.gov/gis/edwards-viewer.html> to determine if your commercial property is located within an Edwards Aquifer Regulatory Zone (EARZ). If yes, visit <http://www.tceq.com/field/eapp/program.html> for next steps required by the Texas Commission on Environmental Quality (TCEQ). **Your professional engineer can help you with this process.**