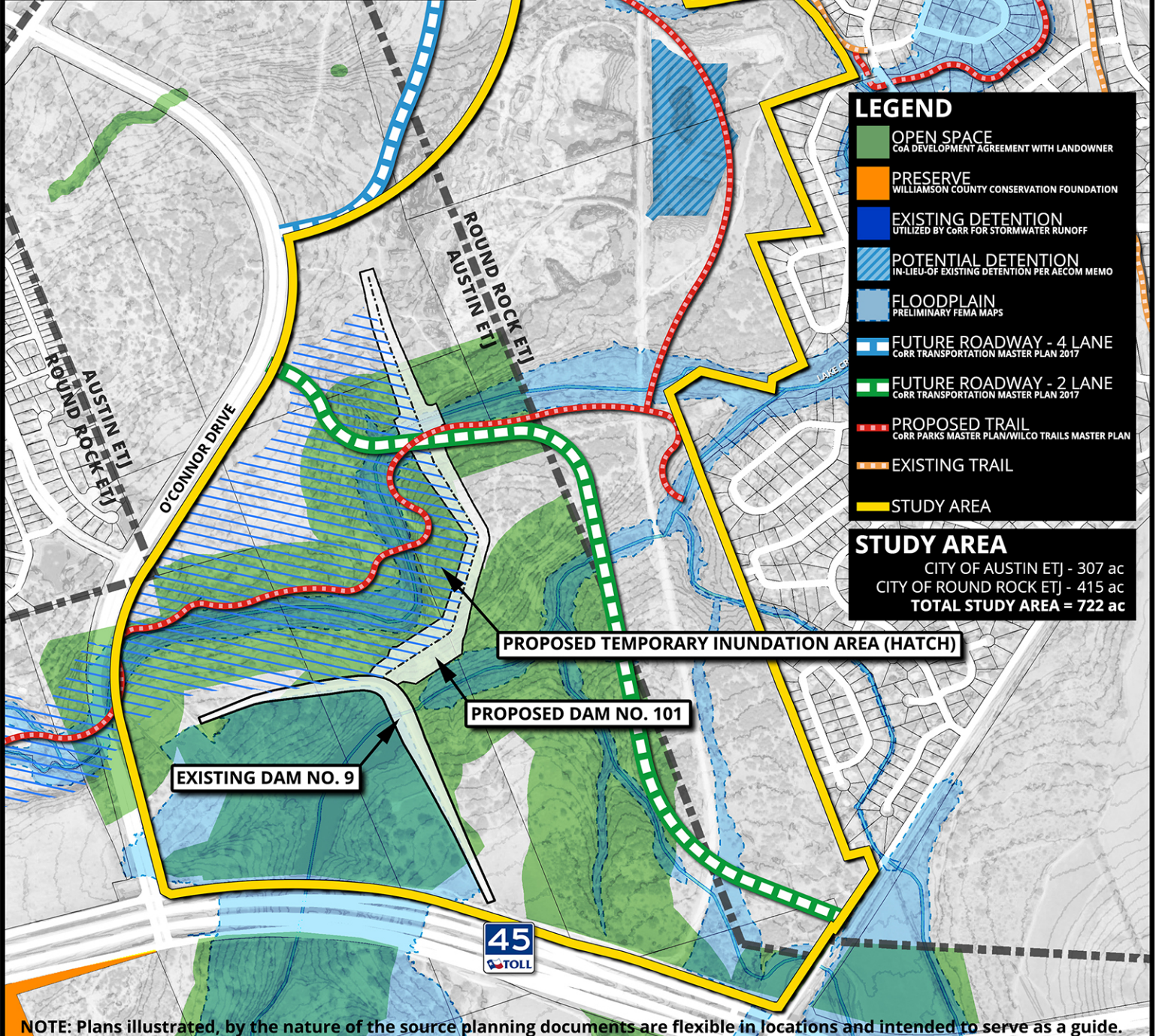
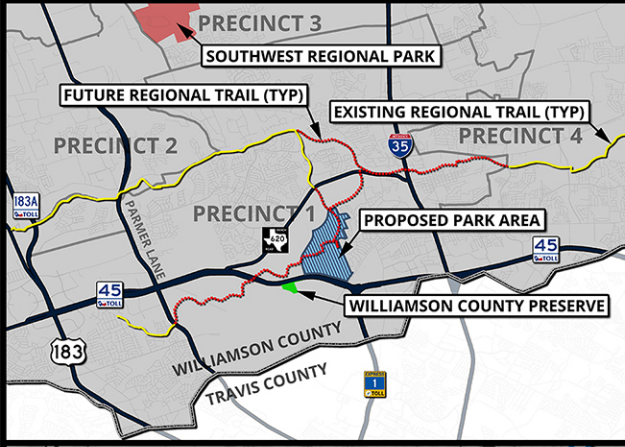


LOCATION MAP



COMPOSITE PLAN

NOT TO SCALE



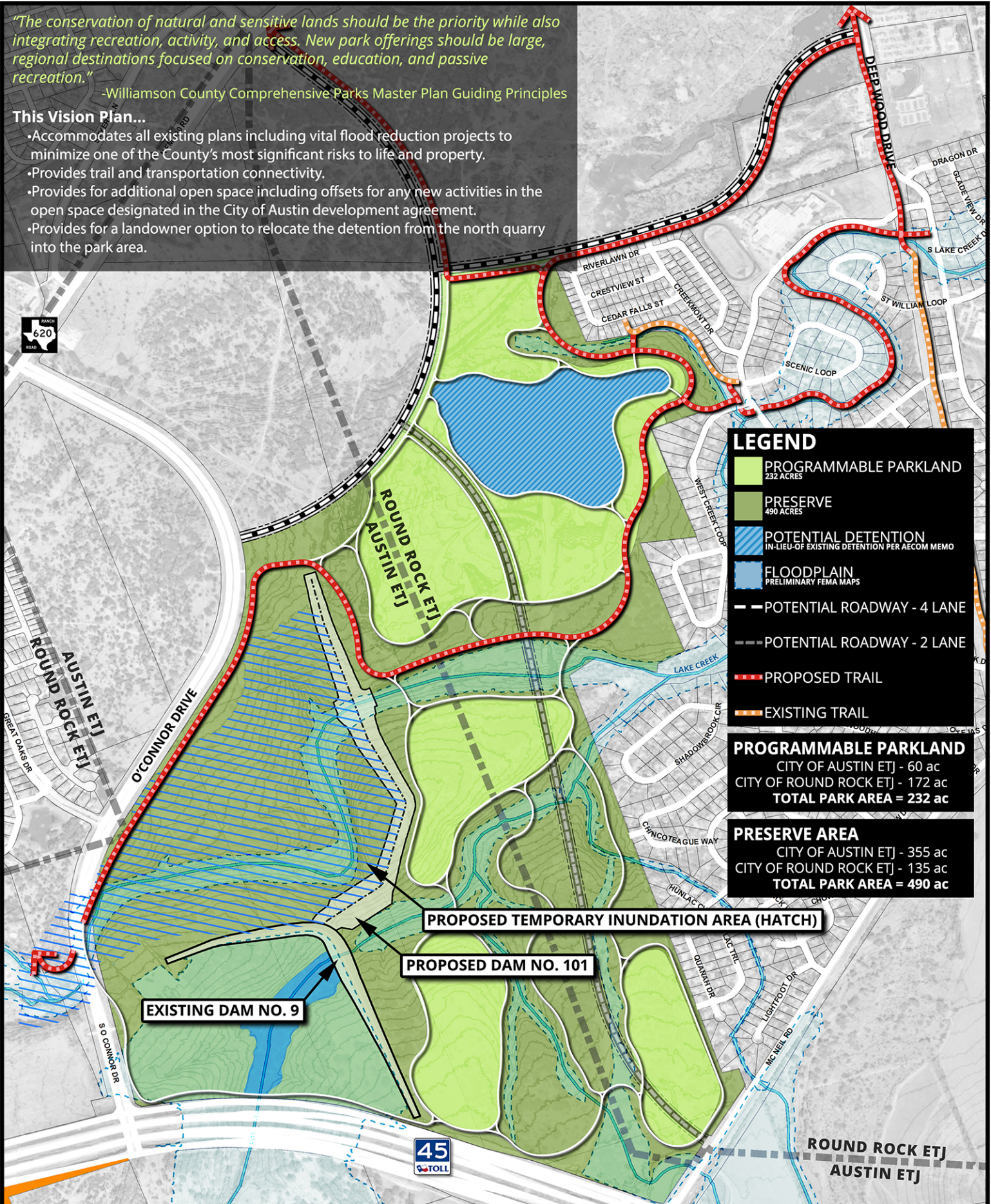
36310 05/03/2019

"The conservation of natural and sensitive lands should be the priority while also integrating recreation, activity, and access. New park offerings should be large, regional destinations focused on conservation, education, and passive recreation."

-Williamson County Comprehensive Parks Master Plan Guiding Principles

This Vision Plan...

- Accommodates all existing plans including vital flood reduction projects to minimize one of the County's most significant risks to life and property.
- Provides trail and transportation connectivity.
- Provides for additional open space including offsets for any new activities in the open space designated in the City of Austin development agreement.
- Provides for a landowner option to relocate the detention from the north quarry into the park area.



LEGEND

- PROGRAMMABLE PARKLAND
232 ACRES
- PRESERVE
490 ACRES
- POTENTIAL DETENTION
IN-LIEU OF EXISTING DETENTION PER AECOM MEMO
- FLOODPLAIN
PRELIMINARY FEMA MAPS
- POTENTIAL ROADWAY - 4 LANE
- POTENTIAL ROADWAY - 2 LANE
- PROPOSED TRAIL
- EXISTING TRAIL

PROGRAMMABLE PARKLAND

CITY OF AUSTIN ETJ - 60 ac
CITY OF ROUND ROCK ETJ - 172 ac
TOTAL PARK AREA = 232 ac

PRESERVE AREA

CITY OF AUSTIN ETJ - 355 ac
CITY OF ROUND ROCK ETJ - 135 ac
TOTAL PARK AREA = 490 ac



VISION PLAN

NOT TO SCALE



36310 05/03/2019