



CITY OF COUPLAND COUNTY ROAD 458 (PFLUGER BERKMAN LN)



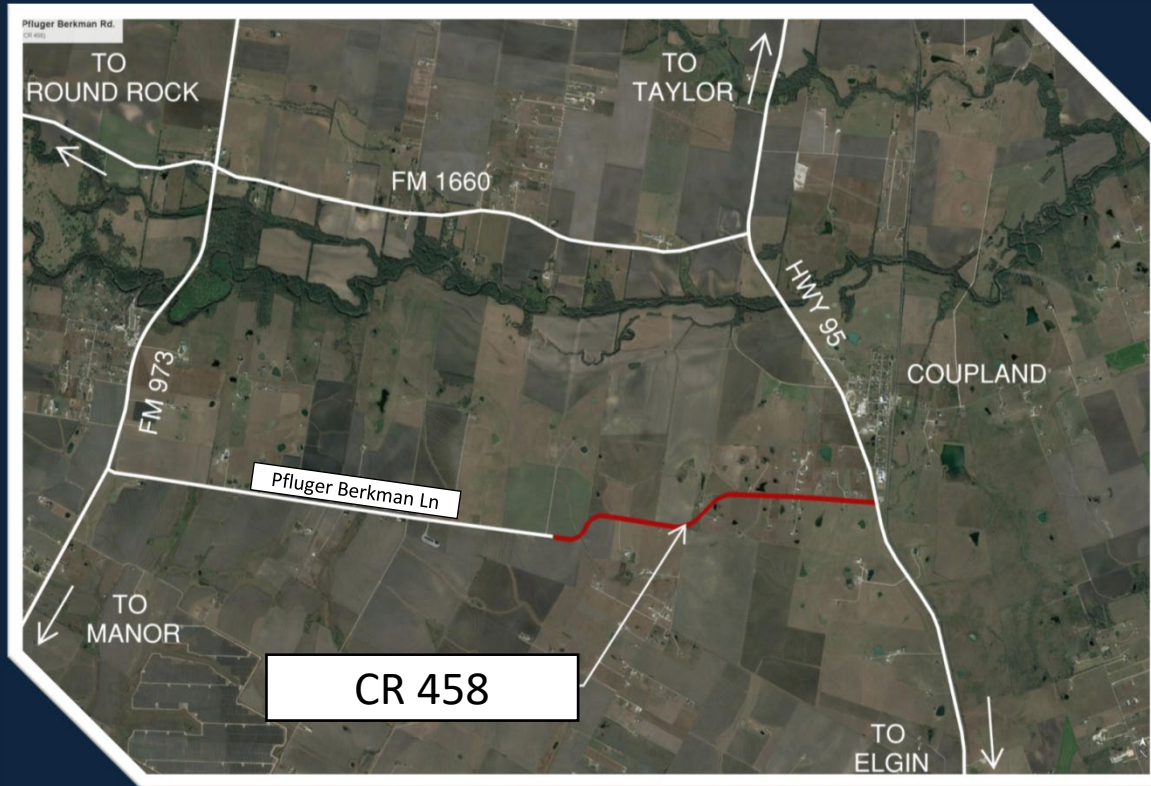
Introduction

The City of Coupland is a Type B General-law Municipality that offers road maintenance and administration of its Subdivision Ordinance. Tax assessment and collection is done by Williamson County

The City's projected revenue for the 2023 fiscal year is \$132,950

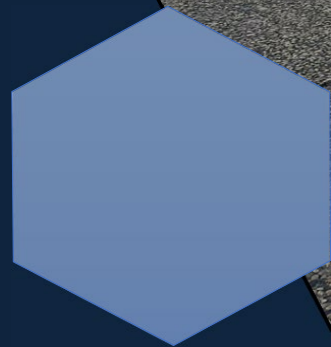


Project Needs



- Current State of road Poor Condition
- Approximately 85% City Road Maintenance Budget was spent on CR 458 in 2022 (\$55,250)
- Year to Date Spending: \$48,000
- Increasing Traffic
- Reported Claims of Vehicle Damage
- Two Fatality Accidents
- These roads not originally designed for the level of traffic and weight of commercial vehicles

Project Needs





ONE MINUTE
ON CR 458

How we get there



Project Specifics

- Engineer's Opinion of Probable Construction Cost \$5.4M
- Project Length +/- 2.12 miles



Project Timeline

- 12 months – Planning/Design/Environmental Clearance
- 12 months – Construction
- No Anticipated ROW Acquisition or Utility Relocations

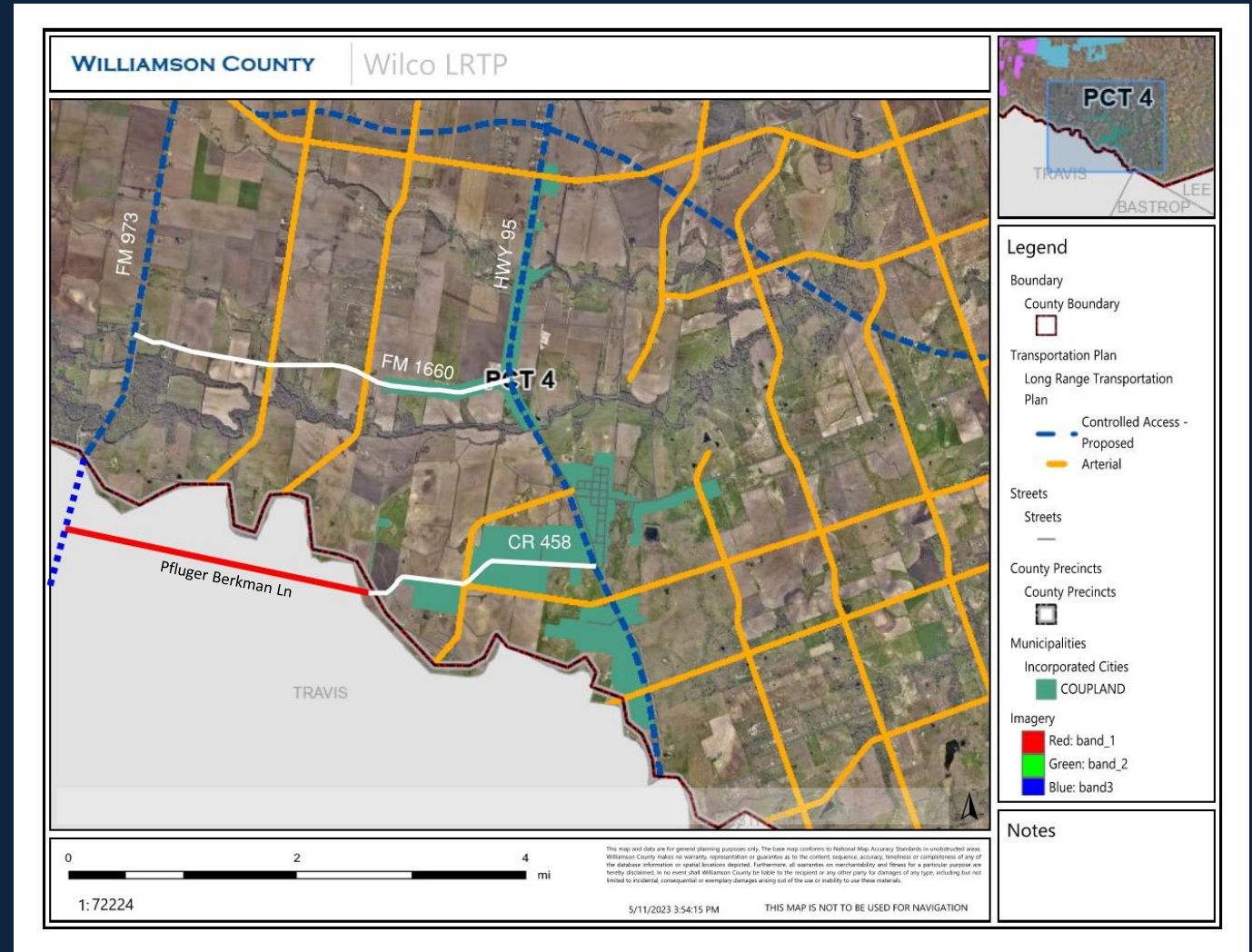


Project Funding

- City of Coupland passed a resolution to match 5% of the total cost up to \$150,000 (~112% of city's annual budget)
- The City's projected revenue for this fiscal year is \$132,950
- The City has a capital reserve fund of \$244,137
- The balance to fund the project would come from Williamson County

Community Benefits

- County Road 458 connects FM 973 and SH 95
- It is used as a corridor for traffic between those highways
- Seeing increasing traffic, including commercial (18 wheelers)
- At southeast side connects to Spur 277 and through to FM 1466
- Together with FM 1660 and FM 1466 used for east/west traffic



Community Benefits

- Road improvements are crucial for safe and efficient transportation and have a substantial impact on the economy
- Enhanced roads result in increased accessibility, reduced travel times, and lower transportation costs, fostering economic growth
- Improved transportation infrastructure facilitates businesses in reaching markets and customers more effectively
- Consumers benefit from greater access to goods and services due to enhanced roads
- Road improvements generate jobs and stimulate economic activity in the construction industry
- The construction industry's economic impact has a multiplier effect on local and regional economies



Project Benefits

L RTP	Economic Growth	Increased Safety	Improved Traffic Flow	Positive Outcome
In the spirit and intent of the Long Range Transportation Plan	<p>This area is the last frontier for major housing developments.</p> <p>Roads are the key for attracting Business (e.g. Samsung)</p>	Project will provide for improved riding surface, safety signage for curves, reflectorized pavement marks aid in night driving	Provides for an additional west/east road way, approximately 2 mi south of FM 1660, links to Spur 277 and FM 1466	<p>Muery and Broad Street, Citizen Complaints Safer Route to School Addressed Flooding</p> <p>City/County Partnership</p>

Summary

- Coupland's Annual Budget +/- \$132,950
- Spent 85% (\$55,250) of their 2022 Road Maintenance Budget on CR 458
- To date this year Coupland has already spent \$48,000
- Coupland making a commitment to match 5% up to \$150,000 (equivalent to ~112% of the city's annual budget)
- The road benefits the residents of Coupland. This is an improvement for the region. It has become an alternate throughfare for FM 1660, and connects to FM 1466 via Spur 277 to further enhance east-west travel





Thank you

Mayor Jack Piper

mayor@cityofcouplandtx.us

www.cityofcouplandtx.us