



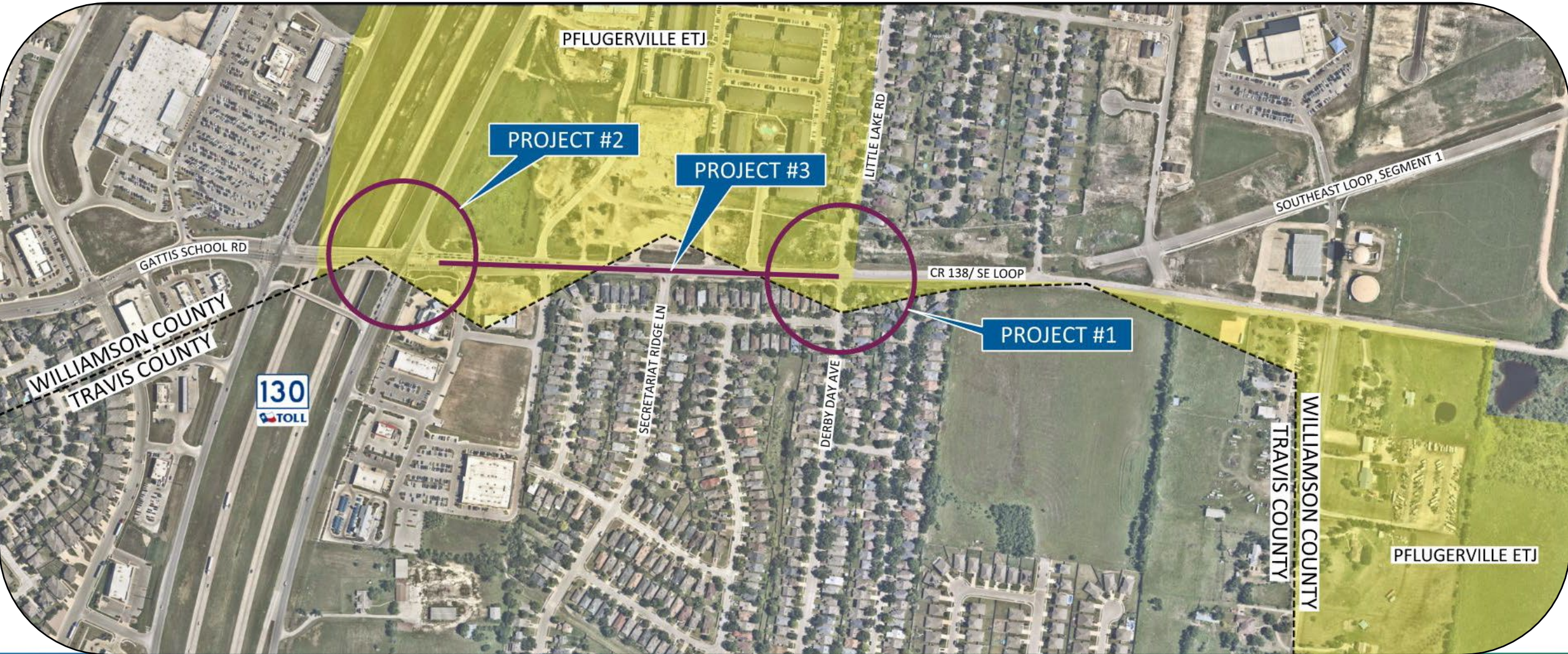
where quality meets life

PFLUGERVILLE
T E X A S

2023 Williamson County Bond Candidate Projects

May 17, 2023

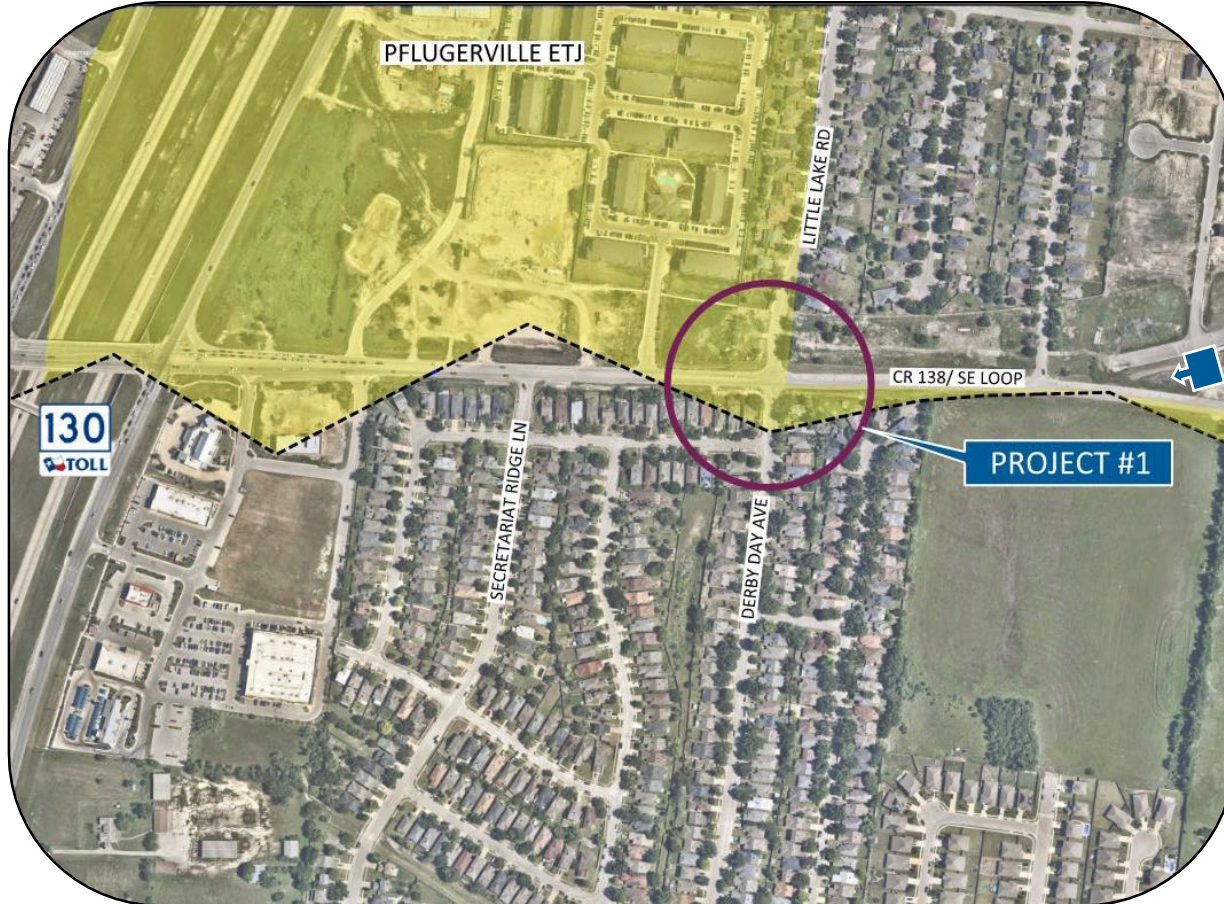
Candidate Projects



Where quality meets life / Overall Projects



Traffic Signal at CR 138 & Derby Day Ave

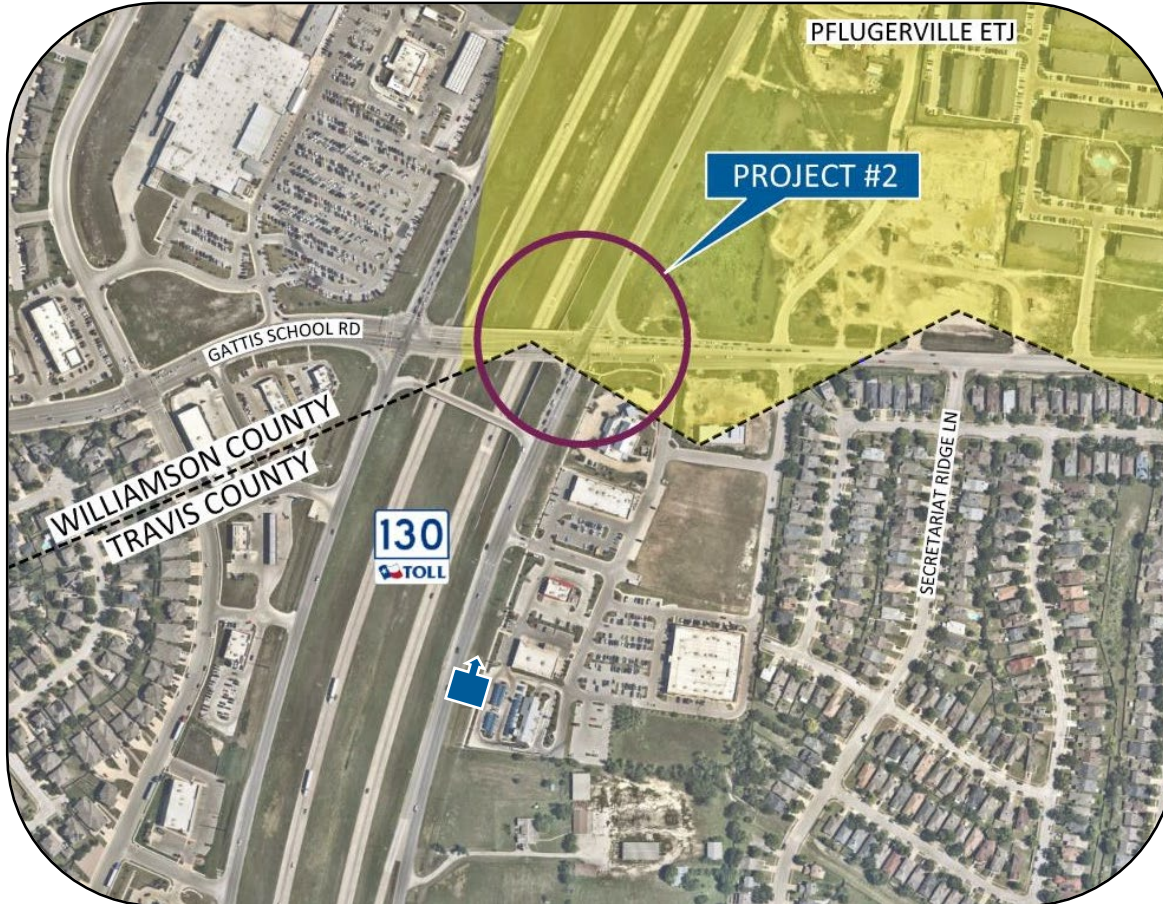


Traffic Signal at CR 138 & Derby Day Ave

- Project Limits: Intersection at CR 138 & Derby Day Ave
- Description: New Traffic Signal with ADA improvements
- Scope: Planning, Design, Utilities, Construction
- Total Amount: \$897,000
- City Contribution: \$150,000



SH 130 and CR 138 Intersection Improvements



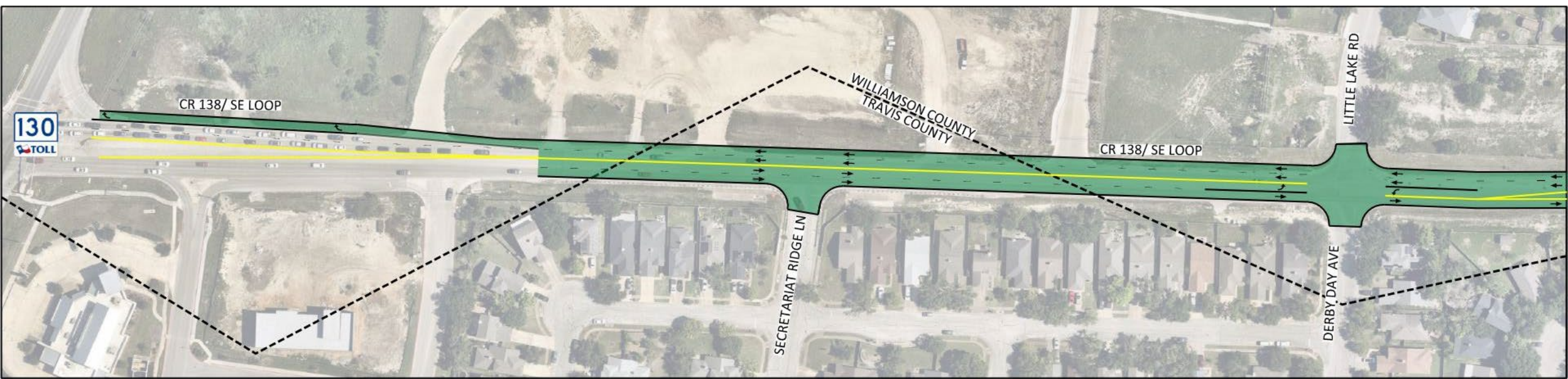
SH 130 and CR 138 Intersection Improvements

- Project Limits: SH 130 Northbound FR and CR 138 Intersection
- Description: Reconfigure lanes with deceleration/acceleration lane and traffic signal improvements
- Scope: Environmental, Planning, Design, Utilities, Construction
- Total Amount: \$3,451,000
- City Contribution: \$560,000



CR 138 Widening





CR 138 Widening



CR 138 Widening

- Project Limits: Secretariat Ridge Ln to East of Derby Day Ave
- Description: Widening 3-lanes to 4-lanes with sidewalk
- Scope: Planning, Design, Utilities, Construction
- Total Amount: \$1,949,000



Thank You!

The City of Pflugerville greatly
appreciates your consideration

