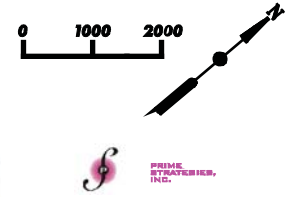
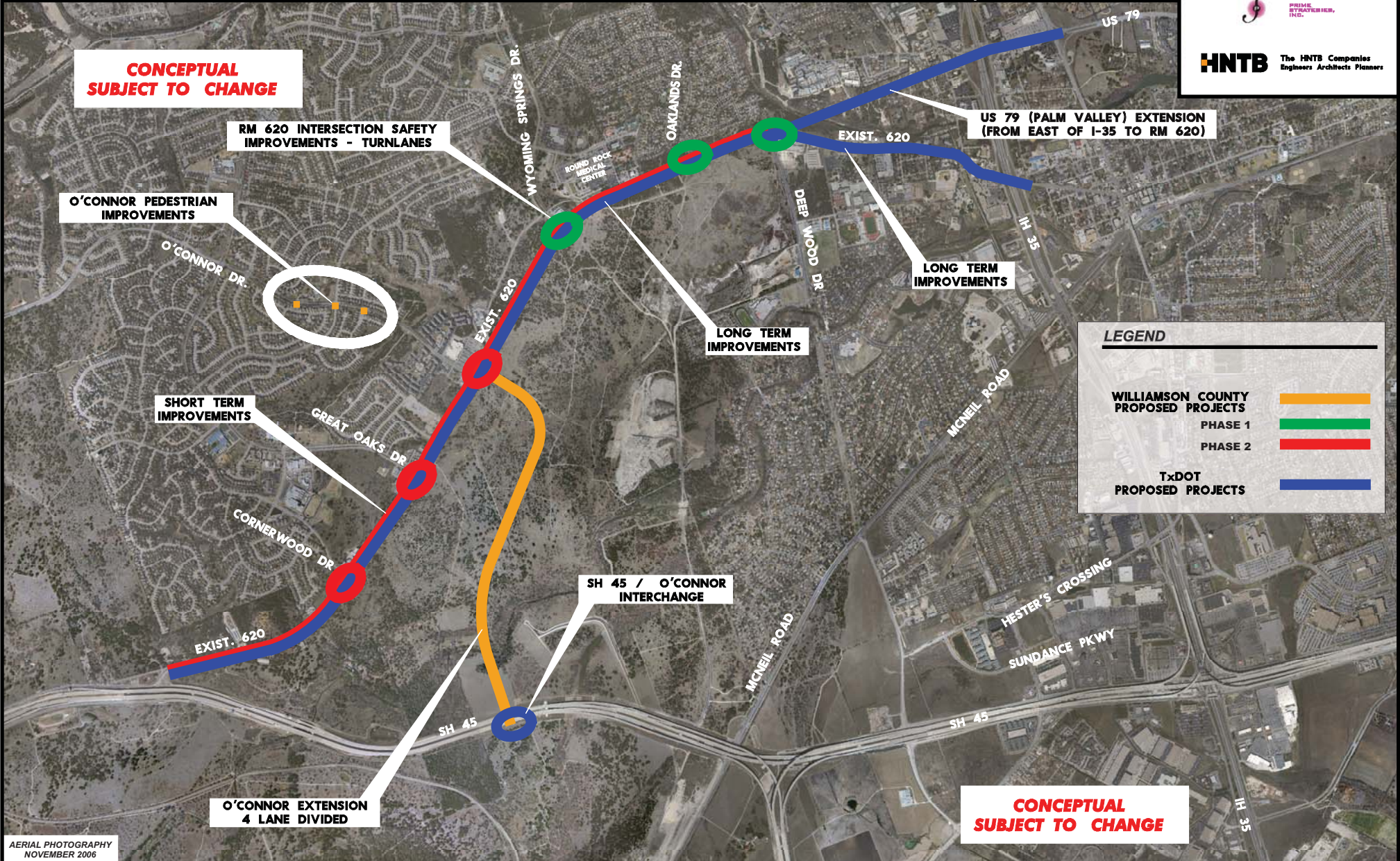


WILLIAMSON COUNTY/ TxDOT PROPOSED PROJECTS

NOVEMBER 14, 2007



HNTB The HNTB Companies
Engineers Architects Planners



**CONCEPTUAL
SUBJECT TO CHANGE**

**RM 620 INTERSECTION SAFETY
IMPROVEMENTS - TURNLANES**

**O'CONNOR PEDESTRIAN
IMPROVEMENTS**

**SHORT TERM
IMPROVEMENTS**

**O'CONNOR EXTENSION
4 LANE DIVIDED**




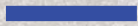
**SH 45 / O'CONNOR
INTERCHANGE**

**LONG TERM
IMPROVEMENTS**

**LONG TERM
IMPROVEMENTS**

**US 79 (PALM VALLEY) EXTENSION
(FROM EAST OF I-35 TO RM 620)**

LEGEND

WILLIAMSON COUNTY PROPOSED PROJECTS	
PHASE 1	
PHASE 2	
TxDOT PROPOSED PROJECTS	

**CONCEPTUAL
SUBJECT TO CHANGE**