

Greater Austin/Travis County, Texas Regional Radio System

Interoperability Plan

**As Adopted
October 20, 2008**

Table of Contents

I.	OVERVIEW:.....	4
II.	TALKGROUP CATEGORIES:.....	6
III.	REGIONWIDE INTEROPERABILITY TALKGROUP CHART (With Sample County Information):	7
IV.	CHANNEL LOCATIONS (ZONES) WITHIN RADIOS:	8
V.	CHANNEL LABELS:	8
VI.	TALKGROUP ASSIGNMENTS:.....	10
o	In-Progress Events:.....	10
o	Special Events:	10
VII.	SPECIAL SITUATIONS:.....	11
o	Law Enforcement In-Progress (Pursuit) Incidents:	11
o	LCRA Communications:	11
o	Aircraft Communications:	12
o	Out of Area and Direct Communications:.....	12
VIII.	EMERGENCY ID:.....	14
IX.	TRANSMISSION ACROSS SYSTEM LAYERS.....	14
X.	APPROVAL OF REGIONAL, COUNTY AND LOCAL PLANS AND LABELS:	15
XI.	TRANSITION:	15
	TABLE A: COUNTY and SUB-SYSTEM (RADIO LAYER) ABBREVIATIONS:	16
	TABLE B: INTEROPERABILITY ZONE DESIGNATIONS:	17
	TABLE C: INTEROPERABILITY ZONE CHANNEL DETAIL:	18
	TABLE D: INCIDENT COMMUNICATIONS PLAN- FORM ICS-205:.....	31
	ATTACHMENT 1 GREATER AUSTIN/TRAVIS COUNTY INTEROPERABILITY PLAN SUMMARY	32

Greater Austin/Travis County Regional Radio System Interoperability Plan

As Adopted - October 20, 2008

I. OVERVIEW:

This plan provides a comprehensive and flexible system that allows radio users, when necessary, to communicate on interoperability (common) talkgroups that are part of the Greater Austin/Travis County Regional Radio System (RRS).

Additionally, this document describes the mechanism for RRS users to interconnect with other radio users, such as those on the Lower Colorado River Authority (LCRA) system and State/ National interoperability channels.

The RRS has grown to include other layers (sub-systems). This includes the Texas Department of Public Safety State Capitol layer, the Williamson County layer, and two layers under construction: Bastrop County and Caldwell County. The Middle Rio Grande Development Council has a nine-county P25 VHF layer along the Texas border with Mexico. Discussions are underway with the City of San Antonio to build a new 700 MHz layer in that area. Other layers will be added as other areas join the RRS.

There are more than 12,000 users of the RRS that communicate on more than 1,000 talkgroups. There are a limited number of talkgroups that can be programmed into each trunked radio. This means that it is not possible, nor desirable, to put "every channel" in "every radio."

The goal is to create a user-friendly plan that will allow users to monitor and communicate with each other when needed. This plan is also designed to use talkgroups that will minimize impact on the capacity of various system layers.

This plan uses a system of standard labels and locations for each interoperability channel in each radio. It is also compliant with State and Federal channel and labeling requirements as outlined in the Texas Statewide Interoperability Channel Plan.

This plan fully supports Special Event and Incident Communications Plans (ICS-205s) as required by the National Incident Management System (NIMS)

To be successful, this plan must be a partnership between RRS management and the management of each user organization. The RRS will assume responsibility to develop training for users and user organizations. It is the responsibility of each user organization to integrate this plan into their daily, special event and emergency SOPs. Each agency must provide communications interoperability training to their command/management, field and communications personnel.

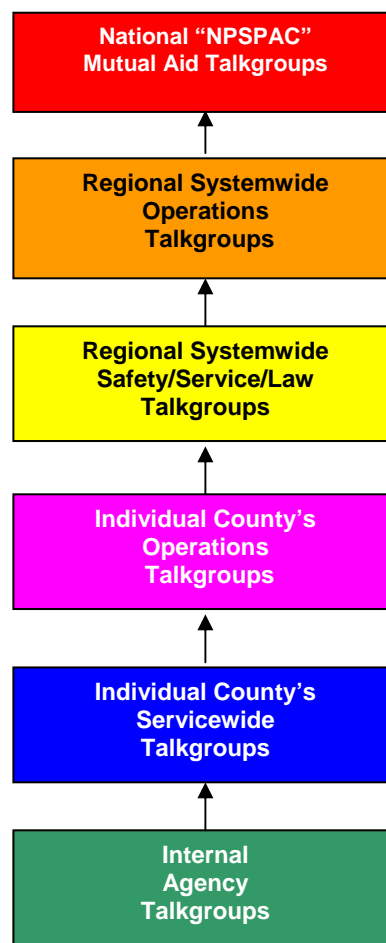
The proper use of common talkgroups ensures that users have the ability to communicate with other users from any agency, without programming every RRS talkgroup into every radio.

In most cases day-to-day communications will take place on internal agency dispatch and operations talkgroups. In the following situations agencies may need to move communications to common talkgroups:

- To communicate with another user who does not have the agency's internal talkgroup(s).
- To allow another user to monitor communications when they do not have the agency's internal talkgroup(s).

In the above cases, communications should be **pushed** (moved) or **patched** by dispatch to a common talkgroup. Common talkgroup choices are described and shown on the below diagrams. Agencies are strongly encouraged to use these talkgroups whenever an event involves outside agencies.

The Talkgroup chosen should be selected at the "lowest level possible" on the diagram to meet the communications need.



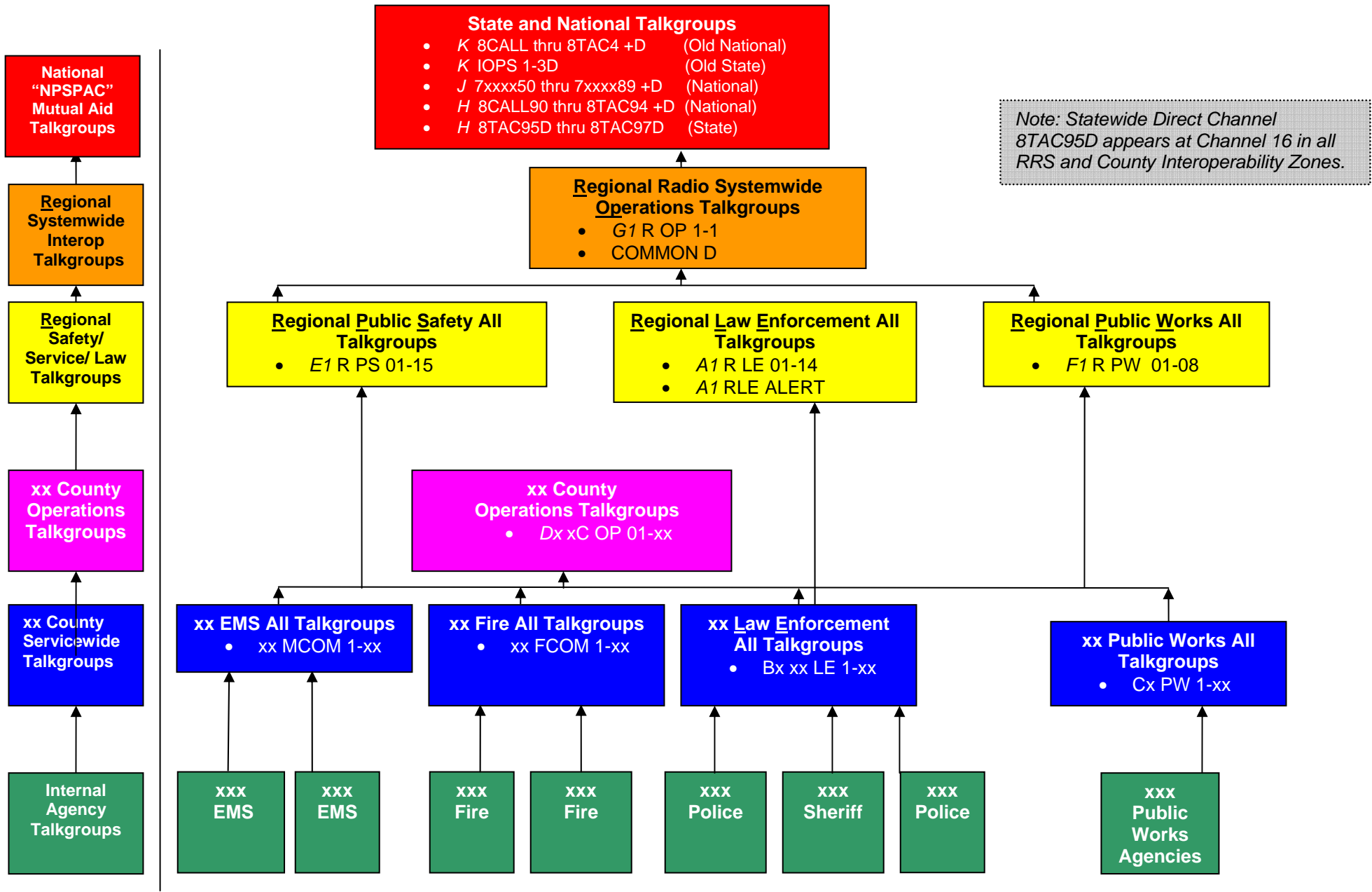
II. TALKGROUP CATEGORIES:

<p style="text-align: center;">National "NPSPAC" Mutual Aid Talkgroups</p>	<p>National "NPSPAC" Mutual Aid Channels: These channels provide common communications among radios Nationwide. All agencies in the Regional Radio System are required to have these talkgroups in each radio.</p> <ul style="list-style-type: none"> • Nationwide 800 MHz Initial Calling and Operations Channels (Old: 8CALL thru 8TAC4 +D. New: 8CALL90 thru 8TAC94 +D) • Nationwide 700 MHz Initial Calling and Operations Channels (Various CALL, TAC, and MOB channels) • Statewide Operations Talkgroups (Old: IOPS1 through 3D. New 8TAC95D** through 8TAC97D)
<p style="text-align: center;">Regional Systemwide Operations Talkgroups</p>	<p>Regional Systemwide Operations Talkgroups: These talkgroups provide common communications among all agencies in the Regional Radio System and with selected other radio systems. All agencies in the Regional Radio System are required to have these talkgroups in each radio.</p> <ul style="list-style-type: none"> • Systemwide Regional Operations (R OP 1-15) • Systemwide Common Direct (COMMOND) *
<p style="text-align: center;">Regional Systemwide Public Safety/ Public Works/ Law Enforcement Talkgroups</p>	<p>Regional Systemwide Public Safety / Public Service/ Law Enforcement Talkgroups: All public safety agencies in the system are required to have the "Public Safety" talkgroups in each radio. Other agencies are required to have "Public Service" talkgroups in each radio. All Law Enforcement Agencies are required to have the "Law Enforcement" Talkgroups in their radios. These talkgroups are not available to non-Law Enforcement agencies.</p> <ul style="list-style-type: none"> • Regional Systemwide Public Safety (R PS 01-15) • Regional Systemwide Public Works (R PW 01-08) • Regional Systemwide Law Enforcement (R LE 01-14, RLE ALERT)
<p style="text-align: center;">Individual County's Operations Talkgroups</p>	<p>County Operations Talkgroups: These are Talkgroups that are required in all radios within a specific County. <i>Example, within Travis County, they include AT OP 01-15 & 17-31</i></p>
<p style="text-align: center;">Individual County's Servicewise Talkgroups</p>	<p>County Servicewise Talkgroups: These talkgroups are available for use among similar public safety agencies within the County. <i>Example, within Travis County, they include:</i></p> <ul style="list-style-type: none"> • EMS All Talkgroups (MEDCOM 01-15) • AFD/ Fire All Talkgroups (FC B01-15, ARFF1-3, FC C04-15) • Greater Austin/Travis Law Enforcement Talkgroups (AT LE 1-15)
<p style="text-align: center;">Internal Agency Talkgroups</p>	<p>Internal Agency Talkgroups: These are "owned" by the agency for dispatch and operations purposes. Each agency may give other agencies permission to use these talkgroups.</p>

*COMMOND Is a direct (non-trunked and non-repeated) talkgroup for unit-to-unit communications. This talkgroup is for use only within the RRS area.

**Statewide Direct Channel 8TAC95D appears at Channel 16 in all RRS and County interoperability zones for use as a direct channel within and outside the RRS area.

III. REGIONWIDE INTEROPERABILITY TALKGROUP CHART (With Sample County Information):



Note: Statewide Direct Channel 8TAC95D appears at Channel 16 in all RRS and County Interoperability Zones.

Use the "lowest level" talkgroup that allows for necessary communications and monitoring.

When organizations can't talk or monitor necessary communications, "Push" (move) all communications or "Patch" the existing talkgroup(s) to a higher level.

IV. CHANNEL LOCATIONS (ZONES) WITHIN RADIOS:

To provide continuity throughout the system, County/Systemwide zones will be located and labeled uniformly in each radio.

- Local Radio Zones will be labeled numerically starting with “1” and will be located to the “right” of the first zone in each radio. Location of each zone will be at the discretion of the user agency.
- County, Regional and National Interoperability Radio Zones will be labeled alphabetically, starting with “A1” and will be located to the “left” of the first zone in each radio.
 - Alpha designators for each zone are shown in “Table B” of this document.
 - If a zone is not included in a radio, that letter will be skipped for that device. For Example: The letter “A” (R LE) will not be used in non-Law Enforcement Radios. The first Interoperability zone in these units will begin with the letter “C” or “D”.

V. CHANNEL LABELS:

All Systemwide and Regional Talkgroups will be labeled in a uniform manner.

- To provide uniformity, labels for 8 character and 12 character displays are required.
- The standard label format for Regional and County use is :

A	1		R			L	E				
B	1		A	T		L	E		0	1	
B	2		W	C		L	E		1	7	*
Zone Letter	Zone Number	Space	Regional or First Letter of County Designation	Second Letter of County Designation	Space	Function of Channel (1 to 3 Characters)	Function of Channel (1 to 3 Characters)	Function of Channel or Space	Channel Number	Channel Number	Suffix: D= Direct * = Encrypted

- Unused and “double” spaces are deleted and characters are moved to the left whenever possible. (e.g. in the above examples the third “Function of Channel” character is not used. The correct label would be “B3 WC LE 17*”).
- Spaces are omitted if needed for 8 Character Displays (e.g. “B1 AT LE 15” is reduced to “B1ATLE15” on 8 character displays.)
- The leading zero on the channel display is normally included (e.g. use “B1 AT LE 06” not “B1 AT LE 6”).
- If additional reduction in space is needed, vowels are typically omitted.
- The following suffix letters will be used in channel labels as needed:
 - “D”= Direct, Not Repeated
 - “*”= Encrypted, Encryption is always on for this Talkgroup.

Agencies are encouraged to use the County Designators shown in Table A when designing County and local labels. Those who do not use these standard designators locally must include an alternate label for other users. This label must include the County abbreviation. Examples are below: Note: In the below chart local labels are shown in “Zone 12.”

Channel:	Local Label:	Other Agency Label : (12 Char)	Other Agency Label: (8 Char)
Regional Law Enforcement 12	A1 R LE 12	A1 R LE 12	A1 RLE12
Williamson Law Enf. 3	B2 WC LE 12*	B2 WC LE 12*	B2WCLE12
Regional Operations 14	G1 R OP 14	G1 R OP 14	G1 ROP14
Austin Police Baker	12 BAKER	12 AT APD BKR	12 ATAPB
Travis Sheriff Baker	12 BAKER	12 AT SO BKR	12 ATSOB
Round Rock PD Baker	12 BAKER	12 WC RR BKR	12 WCRRB
AT/C EMS Medcom 11	12 MEDCOM11	12 AT MC11	12ATMC11

- Radios with radio control heads that have multi-line capability may use a zone label of their preference, so long as the Regional Radio System Label Appears in its entirety:
 Example: 12 AUSTIN POLICE
 12 AT APD BKR

VI. TALKGROUP ASSIGNMENTS:

Normally “in-progress” events will be assigned lower talkgroup numbers.

Preplanned (scheduled) events will be assigned higher talkgroup numbers within a radio zone (bank of talkgroups).

o In-Progress Events:

Agencies with in-progress events that require interoperable communications may use one or more of the County, Systemwide, or National Interoperability Talkgroups. The involved agency’s dispatch center will select the “lowest numbered” appropriate channel that is available for the incident and will patch that Talkgroup into one of their internal agency talkgroups.

Once patched, each console in the system will see an indicator that the channel is in use and not available for other agencies.

If an in-progress event utilizes an interoperability channel that isn’t patched into another channel, the Dispatcher can still move that channel into the “Patch Box” on the console. This indicates that the channel is in use and not available for other agencies.

Note: The agency making the initial patch is the only agency that can add or subtract agencies from that patch.

o Special Events

Certain County and Regional talkgroups can be reserved for special events and can be integrated in to event pre-plans.

The goal of this system is to meet the needs of the event, while complying with National NIMS communications planning requirements and making the most efficient use of RRS resources.

Regional and Austin/Travis County Talkgroup reservations will be maintained on calendars accessible through the City of Austin “Outlook.” Regional Talkgroup reservations will be e-mailed to other regional partners.

Single Points of Contact (SPOCs) for each agency will contact the City of Austin, Office of Emergency Management to pre-schedule these talkgroups. Austin OEM will coordinate with a team of technical and interoperability specialists to reserve the needed channels. They can also assist the event planners in developing a communications plan (ICS-205). The ICS 205 form is shown as Table 4.

County Interoperability Talkgroups can be reserved through the SPOC designated by the involved County.

VII. SPECIAL SITUATIONS:

o **Law Enforcement In-Progress (Pursuit) Incidents:**

The following guideline will assist in the management of in-progress law enforcement incidents where rapidly changing conditions are likely. This guideline will be used if an incident is likely to cross jurisdictional borders and/or multiple agencies are involved.

- o The initiating field unit stays on the original dispatch talkgroup.
- o The initiating dispatch agency patches the original dispatch talkgroup to an available Regional Systemwide Law Enforcement (R LE) talkgroup. Normally, the lowest numbered R LE Talkgroup that is not already patched will be used.
- o The initiating dispatch agency clears the dispatch talkgroup of other traffic.
- o All units responding from other agencies move to the designated R LE talkgroup.
- o At the conclusion of the event, the initiating agency dispatcher clears the patch.

If the incident leaves the RRS coverage area, units will move to statewide 8TAC95D for car-to-car communications. This is located as Channel 16 in all Regional and County Interoperability Zones, including the Regional Law Zone, Channel 16 (A1 8TAC95D). If needed, additional radio communications capabilities can be established by following the “Out-Of-Area Communications” protocol.

o **Law Enforcement “ALERT” Talkgroup**

In-progress Law Enforcement events with the potential to impact multiple jurisdictions will be broadcast by the responsible dispatch center on the “A1 RLE ALERT” talkgroup. This talkgroup is located at channel slot 15 in the A1- Regional Law Enforcement zone. This channel is monitored at all Law Enforcement Dispatch Centers. Agencies will only use this channel for critical in-progress events that are likely to involve other agencies.

Typical uses are:

- Bank Robberies
- Pursuits
- Amber Alerts

This channel will not be used for situations such as routine car thefts, etc.

o **LCRA Communications:**

The Lower Colorado River Authority (LCRA) radio system covers 58 Counties in the LCRA watershed. Hays County and several other agencies utilize this system. This system can be patched into the Greater Austin/Travis County Regional Radio System on a limited basis as follows:

LCRA Connection:

LCRA has created channels in their user radios labeled COA_TC_1 thru COA_TC_4. LCRA users can switch to one of these channels or can be patched on their system to one of these channels, according to LCRA System protocols.

Austin/Travis Regional Radio System Connection:

These same four channels appear on RRS consoles as -COA TC1-LCRA through -COA TC 4-LCRA. They do not appear in RRS user radios.

RRS dispatchers can patch these channels into a local or interoperability channel on their Consoles.

Once patched, each console in the system will see an indicator that the channel is in use and not available for other agencies.

At the conclusion of the event, the initiating agency dispatchers clear the patches on both systems.

○ **Aircraft Communications:**

All public safety aircraft with RRS radios have all of the RRS Interoperability Channels. If communications are not handled on a local channel, aircraft will utilize a Regional Public Safety Channel (R PS 1-15), a Regional Law Channel (R LE 1-15), or a Regional Operations Channel (R OP 1-15). If needed, Dispatchers can patch these channels to local operations channels.

Existing Williamson County helicopter channels HELO 1-4 will be maintained for Williamson County use. If needed, Dispatchers can patch these channels to local operations or RRS interoperations talkgroups.

○ **Out of Area and Direct Communications:**

Units that respond or travel outside of the RRS coverage area will not be able to communicate on existing RRS talkgroups. RRS trunked radio frequencies are utilized in other areas throughout Texas and the United States. Transmitting on RRS trunked radio frequencies can cause interference to these other systems, even though the user may not be able to hear other transmissions on these trunked radio frequencies.

When traveling outside of the coverage area, users must move to the National "NPSPAC" mutual-aid channels. These channels are 700 or 800 MHz "repeated" and "talk-around" (direct) frequencies, similar to the conventional systems that were used in the Austin area before the RRS came on line.

Users can also move to the Statewide Direct channels 8TAC95- 97D located in the "H" Zone.

When operating out of the area, users who need assistance from a dispatch center should switch to the H or K 8CALL channel and call for a dispatch center.

- The H or K 8CALL channel is monitored in many areas. A local dispatcher should respond and may enable a repeater on that channel so that transmissions from other mobile units can be heard.
- The user may be directed to another H or K 8TAC1D thru H or K 8TAC4D channel by the dispatcher.

Units that have an urgent need to communicate with other nearby mobiles should switch to the “8TAC95D” channel this channel is located as Channel 16 in each RRS Regional and County interoperability zone. This direct channel may also be used to resolve poor in building or below grade radio coverage. Law Enforcement Agencies should follow the “In-Progress” procedure which uses this channel.

Units assisting other communities in Texas or other locations in the nation:

- Will be directed from the H 8CALL calling channel to one of the H 8TAC channels for operations.
- Within Texas, H 8TAC95(D) through H 8TAC97D (direct) channels may also be used.

The Regional Radio System and all systems in the United States are switching to a new group of National Interoperability Channels. The new 800 MHz Channels are located in Zone H and 700 MHz Channels are located in Zone J of each radio. These channels should be used in a manner similar to the channels in Zone K above.

700 MHz channels are shown in this plan, but may not be programmed into user radios until later in the transition.

Eventually, as the transition is complete, the old Zone K channels will be removed and replaced with additional 700 MHz interoperability channels.

VIII. EMERGENCY ID:

- Emergency ID Buttons, when pressed, will result in different actions based on the function of that talkgroup.

Type of Channel	Action
National “NPSPAC” Mutual Aid Talkgroups	Conventional System- Not Functional (Zones: H, J, K)
Regional Systemwide Operations Talkgroups	R Operations- Not Functional (Zone: G)
Regional Systemwide Safety/Service/Law Talkgroups	R Public Safety- Not Functional (Zone:E) R Public Works- Not Functional (Zone:F) R Law- Not Functional (Zone:A)
Individual County Operations Talkgroups	County Decision * (Zone: D)
Individual County Servicewide Talkgroups	County Decision* (Zones: B, C, and various)
Internal Agency Talkgroups	ID will follow the Emergency Talkgroup Plan for the “owner” of that talkgroup.

* Options are:

- Revert to the User’s Agency Emergency Talkgroup. This takes the user away from others who are involved in the incident. Other involved users may or may not have this talkgroup. (Non Tactical Emergency)
- Stay on the Interoperability Talkgroup. All consoles equipped with that talkgroup will receive the Emergency ID alarm. Other involved users will be on that channel. (Tactical Emergency)
- Emergency ID not functional on the talkgroup.

IX. TRANSMISSION ACROSS SYSTEM LAYERS

The RRS network allows a trunked interoperability transmission to be broadcast throughout the RRS coverage area on all layers or sub-systems (e.g. Travis and Williamson County layers). This utilizes radio resources on both systems. However, there will be no transmission on that layer, unless a unit on that layer has the talkgroup selected as their “transmit” talkgroup.

X. APPROVAL OF REGIONAL, COUNTY AND LOCAL PLANS AND LABELS:

The RRS Program Manager, as described in the RRS Interlocal Agreement, has Systemwide responsibility for operation of the RRS. The RRS Program Manager has appointed a RRS Interoperability Working Group to advise him on interoperability issues.

The Regional Radio System Interoperability Plan shall be developed by the RRS Interoperability Working Group and approved by the RRS Program Manager.

County Interoperability Plans shall be developed by the user agencies of that County, and approved by the respective County radio manager/coordinator. These County plans will be approved by the RRS Program Manager upon review and approval by the RRS Interoperability Working Group.

Labels and zone locations for all local, County and regional channels shall be reviewed and approved by the respective County radio manager/coordinator. These plans will be approved RRS Program Manager upon request of the involved County manager/coordinator. The RRS Program Manager may consult with the RRS Interoperability Working Group as-needed.

XI. TRANSITION:

It is the goal to have all radios uniformly programmed as soon as possible. To achieve this goal, after adoption of this plan, all agencies will update their templates to reflect these changes. Radios shall be programmed with these new templates during the next “round of programming.” Typically, this programming will take place at no charge to user agencies when all RRS radios are reprogrammed to meet National “rebanding” requirements. The RRS Program Manager has details on the FCC mandated rebanding program.

Existing Greater Austin/Travis County RRS Interoperability Talkgroups will be transitioned into regional talkgroups. Greater Austin/Travis County RRS users will continue to use these talkgroups for local interoperability until the transition is complete. Specifically:

Old Name/ Label	New Name/Label
Interop 1-16 (INTOP1-16)	Regional Operations 1-15, (G1 R OP 1-15)
COMMOND	COMMOND
LAW 1-14 LAW 15	Regional Law 1-14 (A1 R LE 1-14) Regional Law ALERT (A1 RLE ALERT)
Public Safety 1-15	Regional Public Safety 1-15 (E1 R PS 1-15)
Public Works 1-8	Regional Public Works 1-8 (F1 R PW 1-8)

TABLE A: COUNTY and SUB-SYSTEM (RADIO LAYER) ABBREVIATIONS:

Jurisdiction	Abbreviation
Austin/ Travis County	AT
Williamson	WC
Bastrop	BA
Blanco	BL
Burnet	BU
Caldwell	CC
Fayette	FC
Hays County	HC
Lee County	LC
Llano County	LL
Western CAPCOG Counties	WE
State of Texas	TX
LCRA	LCRA or LA

TABLE B: INTEROPERABILITY ZONE DESIGNATIONS:

Zone	Purpose	Sample Label 12 Character	Sample Label 8 Character
A1	Regional Law 1-14 Regional L.E. Alert	A1 R LE 14 A1 RLE ALERT	A1 RLE14 A1 RALRT
B1	Austin Travis Law 1-15	B1 AT LE 14	B1ATLE14
B2	Williamson Co Law 1-15	B2 WC LE 15*	B2WLE15*
B3	Bastrop Co Law 1-15	B4 BA LE 14	B4BALE14
B4	Caldwell Co Law 1-15	B5 CA LE 14	B5CALE14
B5-9	<i>Reserved for other County LAW</i>		
C1	Austin Travis Public Works 1-8	C1 AT PW04	C1ATPW04
C2	Williamson County Public Works	C2 WC PW04	C1WCPW04
C3	Bastrop County Public Works	C1 BA PW04	C1BAPW04
C4	Caldwell County Public Works	C1 CC PW04	C1CCPW04
C5-9	<i>Reserved for Other County Public Works</i>		
D1	Austin Travis Ops 1-15	D1 AT OP 14	D1ATOP14
D2	Austin Travis Ops 17-31	D2 AT OP 28	D2ATOP28
D3	Williamson Co Ops 1-15	D3 WC OP 14	D3WCOP14
D4	Bastrop Co Ops 1-15	D4 BA OP 14	D4BAOP14
D5	Caldwell Co Ops 1-15	D5 CC OP 14	D5CCOP14
D6-9	<i>Reserved for other County OPS</i>		
E1	Regional Public Safety 1-15	E1 R PS 14	E1 RPS14
F1	Regional Public Works 1-8	F1 R PW 08	F1 RPW14
G1	Regional Operations 1-15	G1 R OP 14	G1 ROP14
H	NEW National 8 Call/ 8 Tac	H 8CALL90	H8CALL90
I1	<i>Not used to avoid Label Confusion</i>		
J	National 7 Call/ 7 Tac	J 7CALL59	J7CALL59
K	OLD National 8 Call / 8 Tac	K 8CALL	K 8CALL
L1	National Law Enforcement	L1 7LAW61	L17LAW61
L2	National Fire	L2 7FIRE63	L7FIRE63
L3	National EMS	L3 7MED65	L37MED65
L4	National General/ Public Works	L4 7GTAC57	L7GTAC57
M-Z	Reserved for Expansion		

TABLE C: INTEROPERABILITY ZONE CHANNEL DETAIL:

Zone Letter: A1

Zone Name: Regional Law

Number of Channels: 15 + 1 Statewide Direct 8TAC95D

Purpose: Region-wide Law Enforcement Operations

Allowed Agencies:

- Required in all Law Enforcement Radios.
- Not permitted in NON-Law Enforcement Radios.

Zone: A1 Talkgroup:	12 Character Label	8 Character Label	Notes
1	A1 R LE 01	A1 RLE01	
2	A1 R LE 02	A1 RLE02	
3	A1 R LE 03	A1 RLE03	
4	A1 R LE 04	A1 RLE04	
5	A1 R LE 05	A1 RLE05	
6	A1 R LE 06	A1 RLE06	
7	A1 R LE 07	A1 RLE07	
8	A1 R LE 08	A1 RLE08	
9	A1 R LE 09	A1 RLE09	
10	A1 R LE 10	A1 RLE10	
11	A1 R LE 11	A1 RLE11	
12	A1 R LE 12	A1 RLE12	
13	A1 R LE 13	A1 RLE13	
14	A1 R LE 14	A1 RLE14	
15	A1 RLE ALERT	A1 RALRT	
16	A1 8TAC95D	A8TAC95D	Statewide Direct Channel for use during in-progress events within or outside the RRS area.

Use:

- In-progress incidents and pursuits that extend beyond a single jurisdiction.
 - Initial units will stay on their primary dispatch talkgroup.
 - The primary dispatcher will patch from the primary incident dispatch talkgroup to the first available LE talkgroup. (First available is the first one not already showing as “patched” on the dispatcher’s console).
 - Additional units from other agencies will move to the patched LE talkgroup.
- Scheduled events:
 - Involving multiple law enforcement agencies from multiple Counties.
 - Must not require communications with, or monitoring by, non-law enforcement agencies.

Notes:

- Primary incident talkgroup(s) may be patched to these talkgroups as needed for operations, command and monitoring.
- Talkgroup “8TAC95D” is a direct (non-repeated) channel for use throughout the State of Texas and is located as Channel 16 in this zone.

Zone Letter: E1

Zone Name: Regional Public Safety

Number of Channels: 14 + Statewide Direct 8TAC95D

Purpose: Region-wide Public Safety Operations

Allowed Agencies:

- Required in all Public Safety Radios.
- Not permitted in NON-Public Safety Radios.

Zone E1 Talkgroup	12 Character Label	8 Character Label	Notes
1	E1 R PS 01	E1 RPS01	
2	E1 R PS 02	E1 RPS02	
3	E1 R PS 03	E1 RPS03	
4	E1 R PS 04	E1 RPS04	
5	E1 R PS 05	E1 RPS05	
6	E1 R PS 06	E1 RPS06	
7	E1 R PS 07	E1 RPS07	
8	E1 R PS 08	E1 RPS08	
9	E1 R PS 09	E1 RPS09	
10	E1 R PS 10	E1 RPS10	
11	E1 R PS 11	E1 RPS11	
12	E1 R PS 12	E1 RPS12	
13	E1 R PS 13	E1 RPS13	
14	E1 R PS 14	E1 RPS14	
15	E1 R PS 15	E1 RPS15	
16	E1 8TAC95D	E8TAC95D	Statewide Direct Channel for use during in-progress events within or outside the RRS area.

Use:

- Events where Public Safety agencies need to communicate with or monitor each other and cannot do-so on their internal agency or County interoperability talkgroups.
- Primary use:
 - Command communications among agencies.
 - Communications between Public Safety units that is not handled on other talkgroups.
 - Scheduled Special Events operations within and among Public Safety agencies from multiple Counties.

Notes:

- Primary incident talkgroup(s) may be patched to these talkgroups as needed for operations, command and monitoring.
- Talkgroup "8TAC95D" is a direct (non-repeated) channel for use throughout the State of Texas and is located as Channel 16 in this zone.

Zone Letter: F1

Zone Name: Regional Public Works 1-8

Number of Channels: 8 + 1 Statewide Direct 8TAC95D

Purpose: Region-wide Public Service Operations

Allowed Agencies:

- Required in all Public Service Radios.
- Not permitted in NON-Public Works Radios.

Zone: F1 Talkgroup	12 Character Label	8 Character Label	Notes
1	F1 R PW 01	F1 R PW1	
2	F1 R PW 02	F1 R PW2	
3	F1 R PW 03	F1 R PW3	
4	F1 R PW 04	F1 R PW4	
5	F1 R PW 05	F1 R PW5	
6	F1 R PW 06	F1 R PW6	
7	F1 R PW 07	F1 R PW7	
8	F1 R PW 08	F1 R PW8	
9	BLANK	BLANK	
10	BLANK	BLANK	
11	BLANK	BLANK	
12	BLANK	BLANK	
13	BLANK	BLANK	
14	BLANK	BLANK	
15	BLANK	BLANK	
16	F1 8TAC95D	F8TAC95D	Statewide Direct Channel for use during in-progress events within or outside the RRS area.

Programming:

- Required in All NON Public Safety Radios.

Use:

- Events where Non-Public Safety units need to communicate with or monitor each other.

Notes:

- Primary incident talkgroup(s) may be patched to these talkgroups as needed for operations, command and monitoring.
- Talkgroup "8TAC95D" is a direct (non-repeated) channel for use throughout the State of Texas and is located as Channel 16 in this zone.

Zone Letter: G1

Zone Name: Regional Operations

Number of Channels: 15 + 1 Statewide Direct 8TAC95D

Purpose: Region-wide Operations

Allowed Agencies:

- Required in all Regional Radio System Radios.

Zone: G1 Talkgroup	12 Character Label	8 Character Label	Notes
1	G1 R OP 01	G1 ROP01	
2	G1 R OP 02	G1 ROP02	
3	G1 R OP 03	G1 ROP03	
4	G1 R OP 04	G1 ROP04	
5	G1 R OP 05	G1 ROP05	
6	G1 R OP 06	G1 ROP06	
7	G1 R OP 07	G1 ROP07	
8	G1 R OP 08	G1 ROP08	
9	G1 R OP 09	G1 ROP09	
10	G1 R OP 10	G1 ROP10	
11	G1 R OP 11	G1 ROP11	
12	G1 R OP 12	G1 ROP12	
13	G1 R OP 13	G1 ROP13	
14	G1 R OP 14	G1 ROP14	
15	G1 R OP 15	G1 ROP15	
16	G1 8TAC95D	G8TAC95D	Statewide Direct Channel for use during in-progress events within or outside the RRS area.

Use:

- In-Progress Situations where Public Safety and Non-Public Safety units from multiple Counties need to communicate with or monitor each other.
- Special events requiring where Public Safety and Non-Public Safety units from multiple Counties need to communicate with or monitor each other.

Notes:

- The primary incident talkgroup(s) may be patched to these talkgroups as needed for operations, command and monitoring.
- Talkgroup "8TAC95D" is a direct (non-repeated) channel for use throughout the State of Texas and is located as Channel 16 in this zone

Zone Letter:H

Zone Name: National “NPSPAC” 800 MHz Channels (New Group)

Purpose: NEW Nationwide 800 MHz Channels

Allowed Agencies:

- Required in all Regional Radio System Radios.

Zone H	12 Character Label	8 Character Label	Notes
1	H 8CALL90	H8CALL90	National Repeated Channel. Primary channel for out-of-area calling & communications*
2	H 8TAC91	H8TAC91	National Repeated channel.***
3	H 8TAC92	H8TAC92	National Repeated Channel.***
4	H 8TAC93	H8TAC93	National Repeated Channel.***
5	H 8TAC94	H8TAC94	National Repeated Channel.***
6	H 8CALL90D	H8CAL90D	National Direct Channel. Primary channel for out-of-area calling & communications**
7	H 8TAC91D	H8TAC91D	National Direct Channel.****
8	H 8TAC92D	H8TAC92D	National Direct Channel. ****
9	H 8TAC93D	H8TAC93D	National Direct Channel. ****
10	H 8TAC94D	H8TAC94D	National Direct Channel. ****
11	H 8TAC95D	H8TAC95D	Statewide Direct Channel.
12	H 8TAC96D	H8TAC96D	Statewide Direct Channel.
13	H 8TAC97D	H8TAC97D	Statewide Direct Channel.
14	BLANK	BLANK	
15	COMMOND	COMMOND	RRS Common Direct Talkgroup*****
16	H 8TAC95D	H8TAC95D	Statewide Direct Channel for use during in-progress events within or outside the RRS area.

SPECIAL NOTES:

These channels are being phased-in. Normally, channels in zone K, rather than this zone, will be used until transition is complete and this plan is revised.

In most cases, during transition, the Old and New Repeated Channels will be continuously patched together (e.g. 8TAC1 and 8TAC91 will be patched). However, Direct channels (e.g. 8TAC1D and 8TAC91D) will operate independently.

Use:

- Use when communicating with other agencies outside the Regional Radio System.
- Primary incident talkgroup(s) may be patched to these talkgroups as needed for operations, command and monitoring.
- Talkgroup “8TAC95D” is a direct (non-repeated) channel for use throughout the State of Texas and is located as Channel 16 in this zone

Key:

- * Primary NEW calling channel for out-of-area communications. This channel is repeated in various locations around the State. Repeat function is normally disabled unless requested by field units. After “calling,” units are normally sent to another 8TAC channel.
- **Primary direct calling channel for out-of-area communications.
- ***This channel is repeated in various locations around the State. The repeater function is normally disabled unless requested by field units
- **** Direct “talkaround” channel.
- *****Unit-to-unit within the RRS coverage area.

Zone Letter: J

Zone Name: National “NPSPAC” 700 MHz Channels (First Zone)

Channels assigned region-wide coverage: N/A

Purpose: Nationwide 700 MHz Channels

Allowed Agencies:

- Required in all Regional Radio System Radios.

Zone J	12Character Label	8 Character Label	Notes
1	J 7CALL50	J7CALL50	National Calling Channel*
2	J 7TAC51	J 7TAC51	National Repeated channel.***
3	J 7TAC52	J 7TAC52	National Repeated channel.***
4	J 7TAC53	J 7TAC53	National Repeated channel.***
5	J 7TAC54	J 7TAC54	National Repeated channel.***
6	J 7TAC55	J 7TAC55	National Repeated channel.***
7	J 7TAC56	J 7TAC56	National Repeated channel.***
8	J 7MOB59	J 7MOB59	National Mobile Repeater Channel*****
9	J 7CALL50D	J7CAL50D	National Calling Channel**
10	J 7TAC51D	J7TAC51D	National Direct Channel.****
11	J 7TAC52D	J7TAC52D	National Direct Channel.****
12	J 7TAC53D	J7TAC53D	National Direct Channel.****
13	J 7TAC54D	J7TAC54D	National Direct Channel.****
14	J 7TAC55D	J7TAC55D	National Direct Channel.****
15	J 7TAC56D	J7TAC56D	National Direct Channel.****
16	J 7MOB59D	J7MOB59D	National Mobile Repeater Channel Direct

SPECIAL NOTES:

These 700 MHz channels are being phased-in. Normally, channels in zone K, rather than this zone, will be used until transition is complete and this plan is revised.

Use:

- Use when communicating with other agencies outside the Regional Radio System.
- Use J 7CALL50 or H 7CALL50D for initial calling channel.
- **Key:**
 - * Primary 700 MHz calling channel for out-of-area communications. This channel is repeated in various locations around the State. Repeat function is normally disabled unless requested by field units. After “calling,” units are normally sent to another 7TAC channel.
 - **Primary direct calling channel for 700 MHz out-of-area communications.
 - ***This channel is repeated in various locations around the State. The repeater function is normally disabled unless requested by field units
 - **** Direct “talkaround” channel.
 - ***** Mobile Repeater Channel (if established on-site).

Zone Letter: K

Zone Name: National “NPSPAC” 800 MHz Channels (OLD Group)

Purpose: OLD Nationwide 800 MHz Channels

Allowed Agencies:

- Required in all Regional Radio System Radios.

Zone K	12Character Label	8 Character Label	Notes
1	K 8CALL	K8CALL	National Repeated Channel. Primary channel for out-of-area calling & communications*
2	K 8TAC1	K 8TAC1	National Repeated channel.***
3	K 8TAC2	K 8TAC2	National Repeated Channel.***
4	K 8TAC3	K 8TAC3	National Repeated Channel.***
5	K 8TAC4	K 8TAC4	National Repeated Channel.***
6	K 8CALLD	K 8CALLD	National Direct Channel. Primary channel for out-of-area calling & communications**
7	K 8TAC1D	K 8TAC1D	National Direct Channel.****
8	K 8TAC2D	K 8TAC2D	National Direct Channel. ****
9	K 8TAC3D	K 8TAC3D	National Direct Channel. ****
10	K 8TAC4D	K 8TAC4D	National Direct Channel. ****
11	K IOPS1D	K IOPS1D	Statewide Direct Channel.
12	K IOPS2D	K IOPS2D	Statewide Direct Channel.
13	K IOPS3D	K IOPS3D	Statewide Direct Channel.
14	BLANK	BLANK	
15	COMMOND	COMMOND	RRS Direct Channel
16	K 8TAC95D	K8TAC95D	Statewide Direct Channel for use during in-progress events within or outside the RRS area.

SPECIAL NOTES: These channels will be used until rebanding and re-configuration of radio equipment statewide is complete. These are companion channels to the new series of channels shown in Zone H of this plan.

In most cases, during transition, the Old and New Repeated Channels will be continuously patched together (e.g. 8TAC1 and 8TAC91 will be patched). However, Direct channels (e.g. 8TAC1D and 8TAC91D) will operate independently.

Use:

- Use when communicating with other agencies outside the Regional Radio System.
- Talkgroup “8TAC95D” is a direct (non-repeated) channel for use throughout the State of Texas and is located as Channel 16 in this zone

Key:

- * Primary calling channel for out-of-area communications. This channel is repeated in various locations around the State. Repeat function is normally disabled unless requested by field units. After “calling,” units are normally sent to another 8TAC channel.
- **Primary direct calling channel for out-of-area communications.
- ***This channel is repeated in various locations around the State. The repeater function is normally disabled unless requested by field units
- **** Direct “talkaround” channel.

Zone Letter:L1

Zone Name: National “NPSPAC” 700 MHz Channels – LAW ENFORCEMENT

Channels assigned region-wide coverage: N/A

Purpose: Nationwide 700 MHz Channels

Allowed Agencies:

- Required in all Law Enforcement Radios.
- Not permitted in NON-Law Enforcement Radios.

Zone L1	12Character Label	8 Character Label	Notes
1	L1 7LAW61	L17LAW61	National Repeated channel.
2	L1 7LAW62	L17LAW62	National Repeated channel.
3	L1 7LAW81	L17LAW81	National Repeated channel.
4	L1 7LAW82	L17LAW82	National Repeated channel.
5	L1 7LAW61D	L7LAW61D	National Direct channel.
6	L1 7LAW62D	L7LAW62D	National Direct channel.
7	L1 7LAW81D	L7LAW81D	National Direct channel.
8	L1 7LAW82D	L7LAW82D	National Direct channel.
9			Blank
10			Blank
11			Blank
12			Blank
13			Blank
14			Blank
15			Blank
16	L1 8TAC95D	L8TAC95D	Statewide Direct Channel for use during in-progress events within or outside the RRS area.

SPECIAL NOTES:

These 700 MHz channels are being phased-in. Repeaters may not be available.

Use:

- Use when communicating with other Law Enforcement agencies outside the Regional Radio System.
- May be used for “Direct” communications within the Regional Radio System

Zone Letter:L2

Zone Name: National “NPSPAC” 700 MHz Channels – FIRE

Channels assigned region-wide coverage: N/A

Purpose: Nationwide 700 MHz Channels

Allowed Agencies:

- Required in all Fire Radios.
- Not permitted in NON-Fire or Fire Related Radios.

Zone L2	12Character Label	8 Character Label	Notes
1	L2 7FIRE63	L7FIRE63	National Repeated channel.
2	L2 7FIRE64	L7FIRE64	National Repeated channel.
3	L2 7FIRE83	L7FIRE83	National Repeated channel.
4	L2 7FIRE84	L7FIRE84	National Repeated channel.
5	L2 7FIRE63D	7FIRE63D	National Direct channel.
6	L2 7FIRE64D	7FIRE64D	National Direct channel.
7	L2 7FIRE83D	7FIRE83D	National Direct channel.
8	L2 7FIRE84D	7FIRE84D	National Direct channel.
9			Blank
10			Blank
11			Blank
12			Blank
13			Blank
14			Blank
15			Blank
16	L2 8TAC95D	L8TAC95D	Statewide Direct Channel for use during in-progress events within or outside the RRS area.

SPECIAL NOTES:

These 700 MHz channels are being phased-in. Repeaters may not be available.

Use:

- Use when communicating with other Fire agencies outside the Regional Radio System.
- May be used for “Direct” communications within the Regional Radio System

Zone Letter:L3

Zone Name: National “NPSPAC” 700 MHz Channels – EMERGENCY MEDICAL

Channels assigned region-wide coverage: N/A

Purpose: Nationwide 700 MHz Channels

Allowed Agencies:

- Required in all Emergency Medical Radios.
- Not permitted in NON-Emergency Medical or Emergency Medical Related Radios.

Zone L3	12Character Label	8 Character Label	Notes
1	L3 7MED65	L37MED65	National Repeated channel.
2	L3 7MED66	L37MED66	National Repeated channel.
3	L3 7MED86	L37MED86	National Repeated channel.
4	L3 7MED87	L37MED87	National Repeated channel.
5	L3 7MED65D	L7MED65D	National Direct channel.
6	L3 7MED66D	L7MED66D	National Direct channel.
7	L3 7MED86D	L7MED86D	National Direct channel.
8	L3 7MED87D	L7MED87D	National Direct channel.
9			Blank
10			Blank
11			Blank
12			Blank
13			Blank
14			Blank
15			Blank
16	L3 8TAC95D	L8TAC95D	Statewide Direct Channel for use during in-progress events within or outside the RRS area.

SPECIAL NOTES:

These 700 MHz channels are being phased-in. Repeaters may not be available.

Use:

- Use when communicating with other EMS agencies outside the Regional Radio System.
- May be used for “Direct” communications within the Regional Radio System

Zone Letter:L4

Zone Name: National “NPSPAC” 700 MHz Channels – PUBLIC WORKS

Channels assigned region-wide coverage: N/A

Purpose: Nationwide 700 MHz Channels

Allowed Agencies:

- Required in all Public Works Radios.
- Not permitted in NON-Public Works Radios.

Zone L4	12Character Label	8 Character Label	Notes
1	L4 7GTAC57	L7GTAC57	National Repeated channel.
2	L4 7GTAC77	L7GTAC77	National Repeated channel.
3	L4 7GTAC57D	7GTAC57D	National Direct channel.
4	L4 7GTAC77D	7GTAC77D	National Direct channel.
5			Blank
6			Blank
7			Blank
8			Blank
9			Blank
10			Blank
11			Blank
12			Blank
13			Blank
14			Blank
15			Blank
16	L4 8TAC95D	L8TAC95D	Statewide Direct Channel for use during in-progress events within or outside the RRS area.

SPECIAL NOTES:

These 700 MHz channels are being phased-in. Repeaters may not be available.

Use:

- Use when communicating with other Public Works agencies outside the Regional Radio System.
- May be used for “Direct” communications within the Regional Radio System

1 **TABLE D: INCIDENT COMMUNICATIONS PLAN- FORM ICS-205:**

INCIDENT RADIO COMMUNICATIONS PLAN		1. Incident Name		2. Date/Time Prepared		3. Operational Period Date/Time	
		4. Basic Radio Channel Utilization					
Radio Type/Cache	Channel	Function	Frequency/Tone	Assignment	Remarks		
5. Prepared by (Communications Unit) Requested By: Prepared By:							
NOTES: 1							

ATTACHMENT 1: GREATER AUSTIN/TRAVIS COUNTY INTEROPERABILITY PLAN SUMMARY

Scope of Plan: All radios that primarily affiliate with the Austin/Travis County Countywide or E230 Layers

Specific Channel/ Zone assignments:

- National and Regional Channels-

- All Radios:

ZONE	USE
L (1-4)	National 700 MHz (Service-specific channels programmed as appropriate)
K	National 800 MHz (Old)
J	National 700 MHz
H	National 800 MHz (New)
G1	Regional Operations

- Public Works (non-Public Safety) Radios:

ZONE	USE
F1	Regional Public Works

Channel Management: Console Patch Indicator & Preplanned Event Notification.

- Public Safety Radios:

ZONE	USE
E1	Regional Public Safety

Channel Management: Console Patch Indicator & Preplanned Event Notification.

- Law Enforcement Radios:

ZONE	USE
A1	Regional Law

Channel Management: Console Patch Indicator & Preplanned Event Notification.

- **Austin/Travis County Channels-**

- **Note: “8TAC95D” will be in Channel Position 16 in all Interoperability Zones. Agencies are encouraged to place this channel in Position 16 on Internal Agency Zones.**

- **All Radios (Countywide Operations):**

ZONE	USE	12 Char Label	8 Char Label
D2	Austin- Travis Operations 17-31	D2 AT OP17 through D2 AT OP31	D2ATOP17 through D2ATOP31
D1	Austin- Travis Operations 1-15	D1 AT OP01 through D1 AT OP15	D1ATOP01 through D1ATOP15

Channel Management: Console Patch Indicator & Preplanned Event Notification.

- **Public Works (Countywide Non-Public Safety):**

ZONE	USE	12 Char Label	8 Char Label
C1	Austin- Travis Public Works 1-8	C1 AT PW 01 through C1 AT PW 08	C1 ATPW1 through C1 ATPW8

Channel Management: Console Patch Indicator & Preplanned Event Notification.

- **Law Enforcement (Countywide Law):**

ZONE	USE	12 Char Label	8 Char Label
B1	Austin- Travis Law 1-15	B1 AT LE 01 through B1 AT LE 15	B1ATLE01 through B1ATLE15

Channel Management: Console Patch Indicator & Preplanned Event Notification.

- **Fire (Countywide Fire):**

AFD ZONE	USE	Internal Label	External Label
2	Fire Communication B1-15	*TBD*	_ AT FC B01 through _ AT FC B15
3	ARFF 1 through ARFF 3	*TBD*	_ AT ARFF 1 through _ AT ARFF 3
	Fire Communication C1-15	*TBD*	_ AT FC C04 through _ AT FC C15

Channel Management: Active Channel Assignment by Austin Fire Dept.

Programming Authority: Austin Fire Dept.

- **Emergency Medical Services (Countywide EMS):**

EMS ZONE	USE	Internal Label	External Label
2	Medical Communication 1- 15	2 MEDCOM 01 through 2 MEDCOM 15	_ AT MC 01 through _ AT MC 15

Channel Management: Active Channel Assignment by Austin-Travis County EMS

Programming Authority: Greater Austin/Travis County EMS

- **Public Safety PIO Talkgroup (Encrypted):**

ZONE	USE	Internal Label	External Label
(User Choice)	Public Safety PIOs ONLY (encrypted)	_ AT PSPIO*	_ AT PSPIO*

Programming Authority: Austin OEM

- **System Diagram: See Below**

The Greater Austin/Travis County, Interoperability Plan is approved this 20th day of October, 2008.

Mike Simpson

Greater Austin/Travis County Regional Radio System Program Manager

